

# MEET SAN JOSE CAPITAL OF SILICON VALLEY

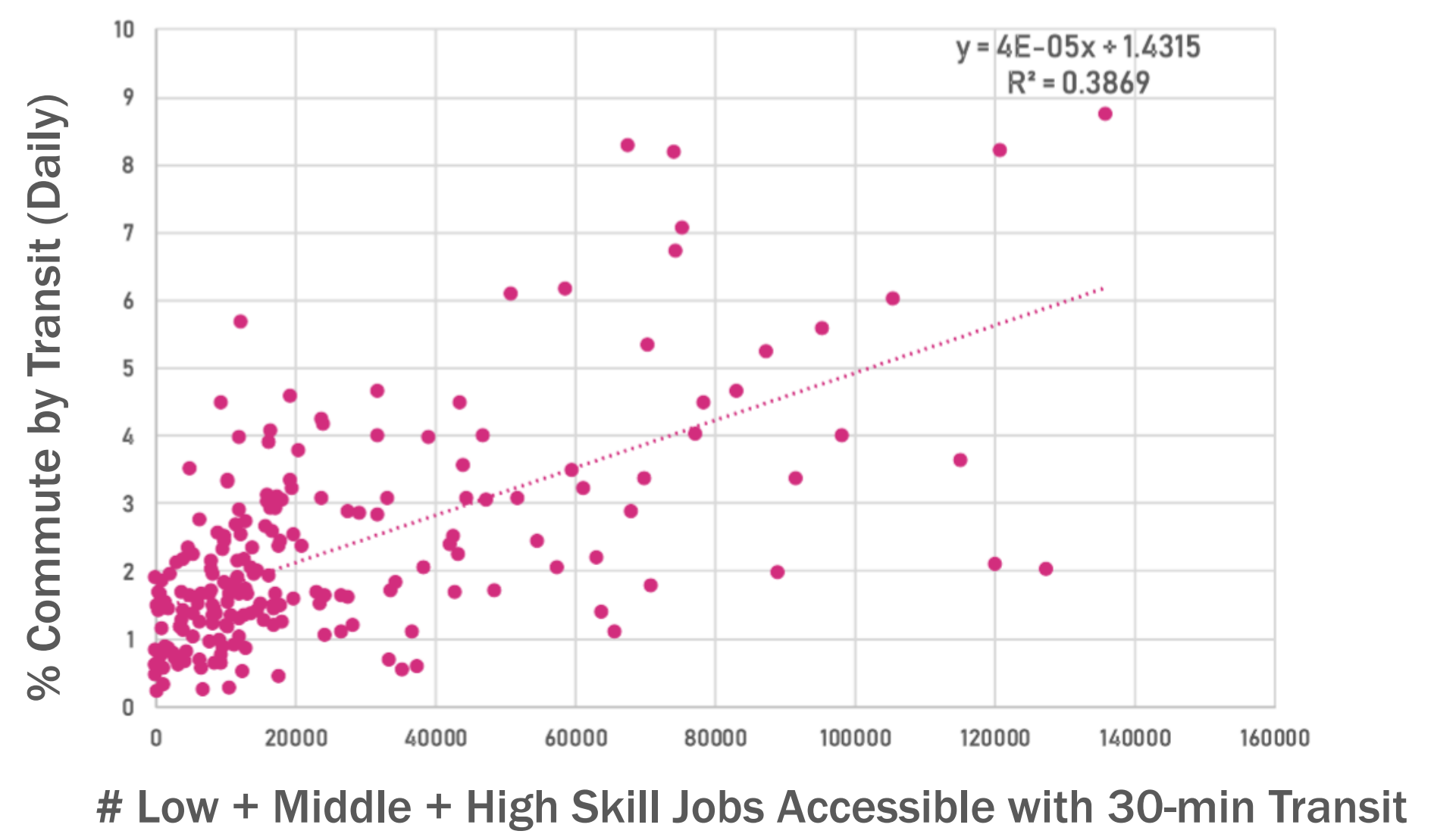
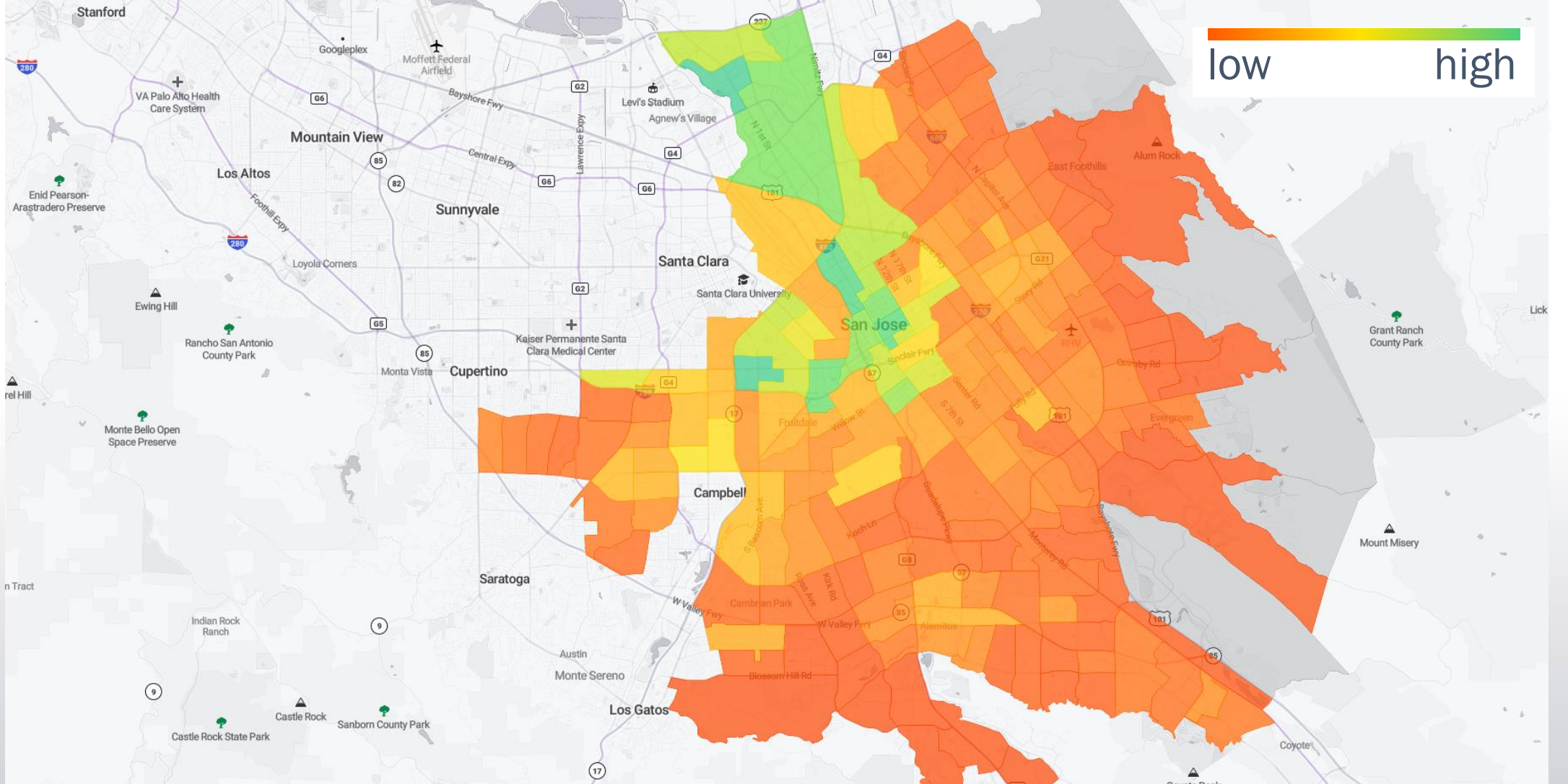
## Move San José Decision-Support System (DSS)

Move San José, the citywide transportation plan, is not a book. It is actually a tool that uses data to understand changing conditions, helps decision-makers prioritize investment strategies and projects, and tracks performance toward the city's sustainability goals and equitable outcomes.

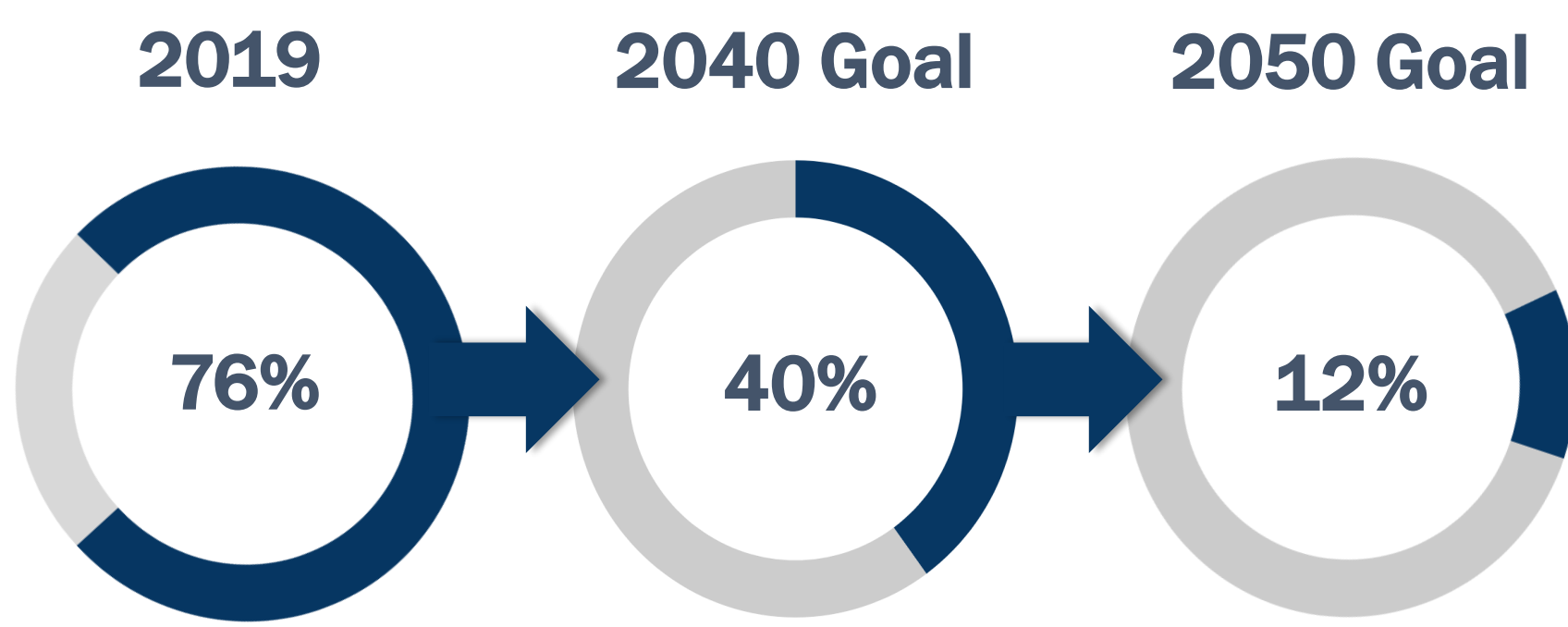
### What does the DSS do?

- Monitors 9 goal areas and 40+ key performance indicators (KPIs) by neighborhood
- Prioritizes investment strategies across and within neighborhoods based on existing KPI deficiencies and community inputs
- Forecasts the impacts of strategies on KPIs and mode shift

## KPI: # Low-skill Jobs Accessible within 30-min Transit Ride

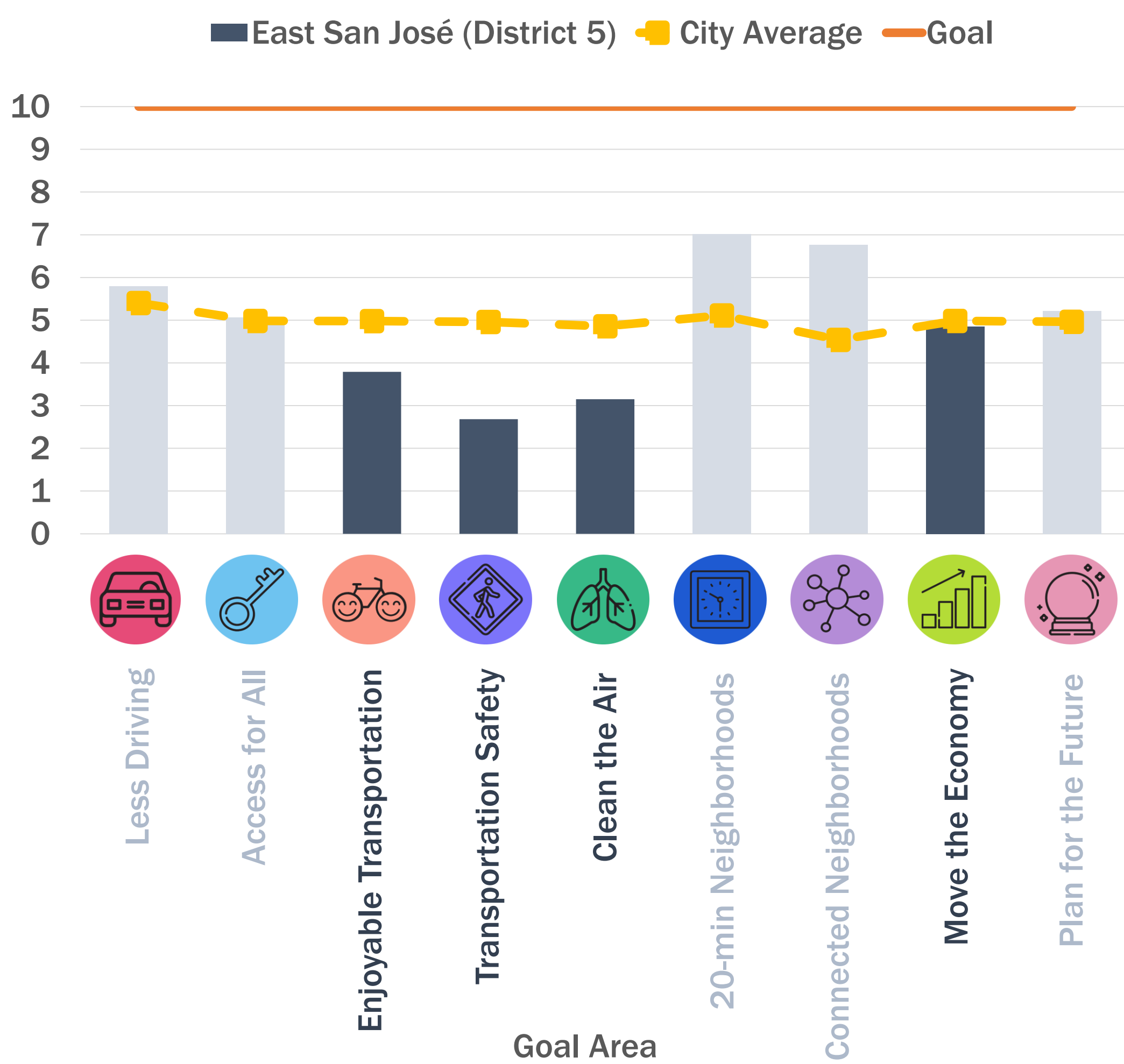


## San José's Drive-Along Mode Share



## Council District Needs Assessment

Normalized KPI Score



## Move San José DSS - Next Steps

- Improve its "Prediction Module" to forecast the impacts of individual projects on KPIs and mode shift
- Improve the user experience of DSS
- Build a web-based and public version
- Calibrate with before-and-after data
- Collaborate with partners on regional tool development

## Strategy Recommendations

East San José (District 5) is a vibrant and diverse area that has a rich Chicano/Mexican American history and is home to the city's largest share of Hispanic and Latino population, low-income families, non-English speakers, and single parents.

Goal Areas for Improvement	KPI Deficiencies	High Priority Strategies for D5
Enjoyable Transportation	Transit reliability (% on-time arrival rate) and transit speeds in denser areas are lower than the city average	Bus stop improvements Access to Car Share
Transportation Safety	Higher rates of crashes resulting in severe injuries and fatalities. Higher pedestrian and bicycle stress levels	Access to EV Low-Stress Bike Facilities
Clean the Air	Low electric vehicle adoption and low coverage of public charging infrastructure	Transit Expansion
Move the Economy	Number of job opportunities reachable within 30-minute by transit, bike, and walking are low	Safer Streets On-Demand Micro-Transit

San José DOT has prioritized these strategies in its investment portfolio in District 5, including street infrastructure projects, new development projects, programs & policies, and grant funding opportunities relative to other areas of the city.