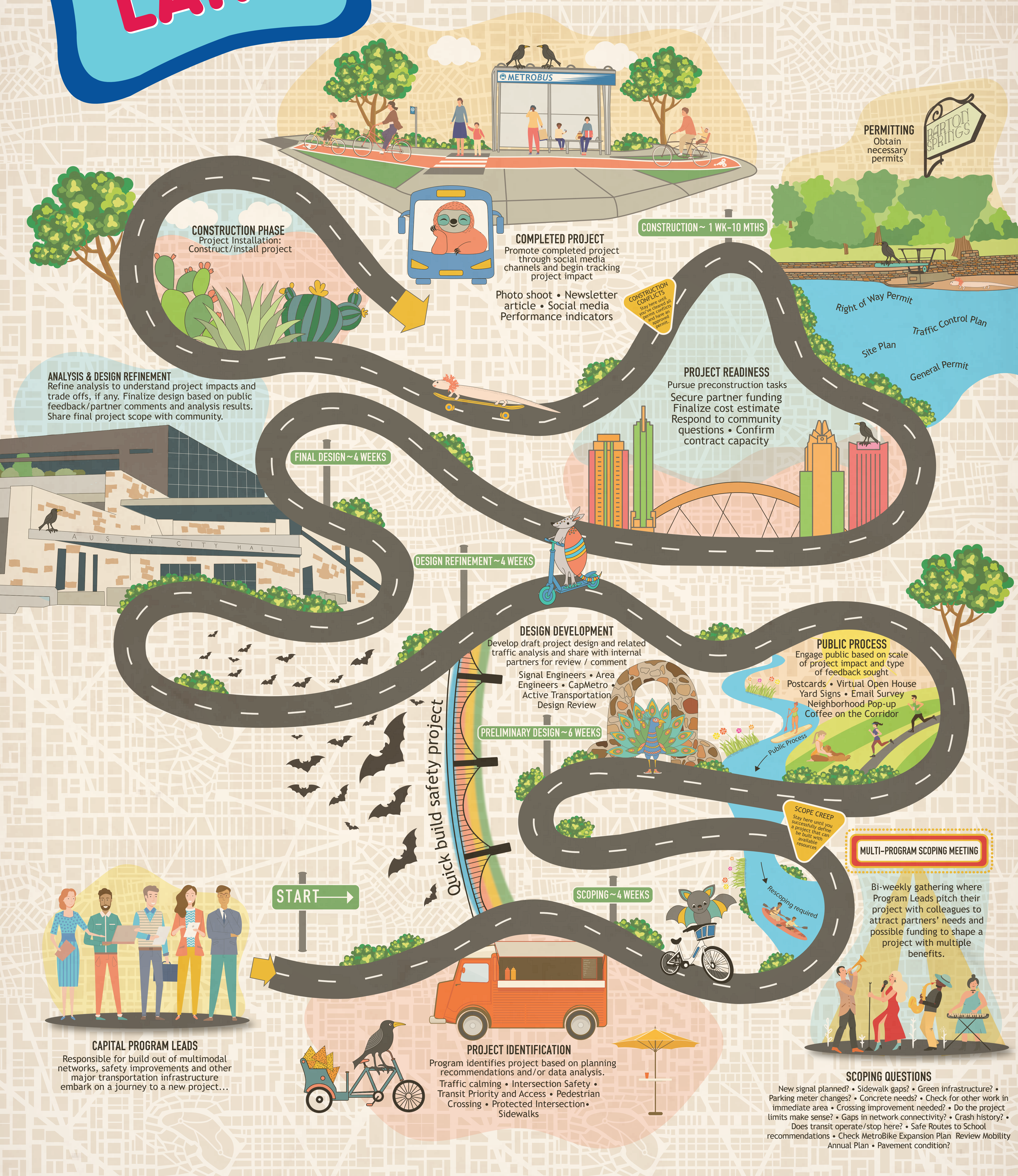


AUSTIN LAND

Hey Y'all! Welcome to Austin's project development process. We are a collaborative bunch down in central Texas, and we've figured out how to deliver dynamic, interdependent and complex projects built from a foundation of robust coordination between multiple mobility stakeholders. Take a journey through Austin Land (inspired by your favorite childhood game: Candy Land) to see how we work together to make your trip safer, faster and more comfortable, whether you're walking, rolling, or riding down our city streets!



CAPITAL PROGRAM LEADS
Responsible for build out of multimodal networks, safety improvements and other major transportation infrastructure embark on a journey to a new project...

START →

PROJECT IDENTIFICATION
Program identifies project based on planning recommendations and/or data analysis.
Traffic calming • Intersection Safety • Transit Priority and Access • Pedestrian Crossing • Protected Intersection • Sidewalks

SCOPING ~ 4 WEEKS

SCOPING QUESTIONS
New signal planned? • Sidewalk gaps? • Green infrastructure? • Parking meter changes? • Concrete needs? • Check for other work in immediate area • Crossing improvement needed? • Do the project limits make sense? • Gaps in network connectivity? • Crash history? • Does transit operate/stop here? • Safe Routes to School recommendations • Check MetroBike Expansion Plan Review Mobility Annual Plan • Pavement condition?

MULTI-PROGRAM SCOPING MEETING
Bi-weekly gathering where Program Leads pitch their project with colleagues to attract partners' needs and possible funding to shape a project with multiple benefits.

SCOPE CREEP
Stay here until you successfully define a project that can be built with available resources

Rescoping required

PUBLIC PROCESS
Engage public based on scale of project impact and type of feedback sought
Postcards • Virtual Open House
Yard Signs • Email Survey
Neighborhood Pop-up
Coffee on the Corridor

DESIGN DEVELOPMENT
Develop draft project design and related traffic analysis and share with internal partners for review / comment
Signal Engineers • Area Engineers • CapMetro • Active Transportation Design Review

PRELIMINARY DESIGN ~ 6 WEEKS

DESIGN REFINEMENT ~ 4 WEEKS

PROJECT READINESS
Pursue preconstruction tasks
Secure partner funding
Finalize cost estimate
Respond to community questions • Confirm contract capacity

CONSTRUCTION CONFLICTS
Stay here until you've cleared all permit conflicts and have all necessary permits

CONSTRUCTION ~ 1 WK-10 MTHS

COMPLETED PROJECT
Promote completed project through social media channels and begin tracking project impact
Photo shoot • Newsletter article • Social media
Performance indicators

CONSTRUCTION PHASE
Project Installation:
Construct/install project

PERMITTING
Obtain necessary permits

Right of Way Permit
Traffic Control Plan
Site Plan
General Permit

ANALYSIS & DESIGN REFINEMENT
Refine analysis to understand project impacts and trade offs, if any. Finalize design based on public feedback/partner comments and analysis results. Share final project scope with community.

FINAL DESIGN ~ 4 WEEKS

Quick build safety project