



Julian B. Lane Riverfront Park



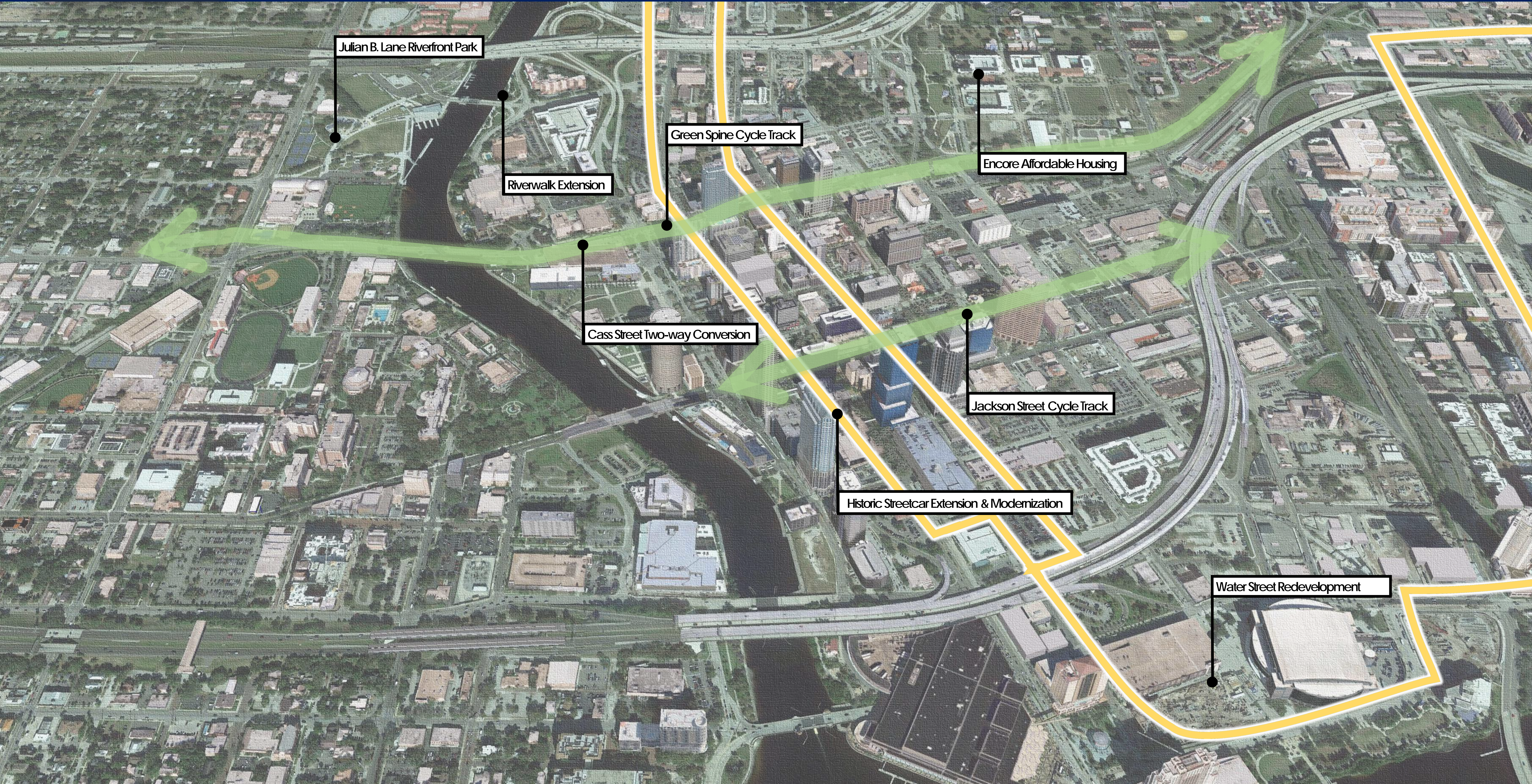
Green Spine



Jackson Street Cycle Track



Water Street



Julian B. Lane Riverfront Park

Riverwalk Extension

Green Spine Cycle Track

Cass Street Two-way Conversion

Historic Streetcar Extension & Modernization

Jackson Street Cycle Track

Encore Affordable Housing

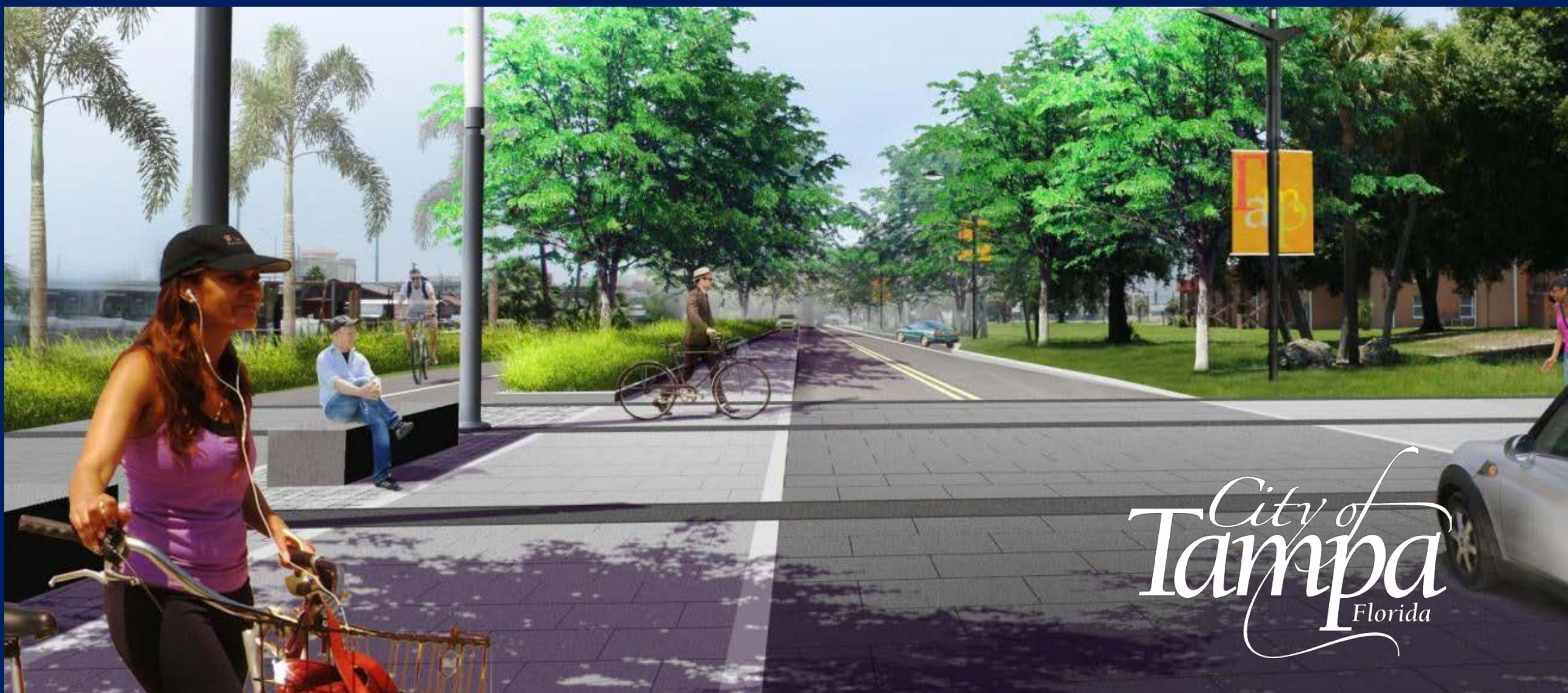
Water Street Redevelopment



Downtown Connectivity



Livable Transportation



InVision Tampa Center City Plan: A comprehensive community-driven process



4/28/2012 | Ybor/VM Ybor
Ragan Park: 1200 East Lake Avenue



5/10/2012 | Channel District
Florida Aquarium: 701 Channelside Drive



4/28/2012 | Tampa Heights
Robles Park: 3305 North Avon Avenue



5/10/2012 | North Hyde Park
Mt. Olive AME Church: 1902 West LaSalle Street

BUILDING BLOCKS
Future goals and broad
principles that guide the
vision and key outcomes

- A Reimagined and Refocused River and Waterfront
- Strong and Livable Center City Neighborhoods
- Livable Community Linkages Between Neighborhoods and Downtown
- A Vital Mix of Uses and a Strong Pedestrian Environment in the Core
- An Urban Pattern That Supports Transit

EACH FORWARD MOVE MAY IMPLEMENT ONE OR MULTIPLE BUILDING BLOCKS

FORWARD MOVES
Key initial actions for the City and community that
represent a first step toward
achieving the vision and building blocks

- River Places
- North Downtown Village
- South Downtown Reurbanization
- Downtown Public Realm Improvements
- Neighborhood Connectors
- Remade Tampa + Florida Corridors
- East-West Green Spine
- Cross-River Transit
- Neighborhood Revitalization
- Med-Ed District Collaboration