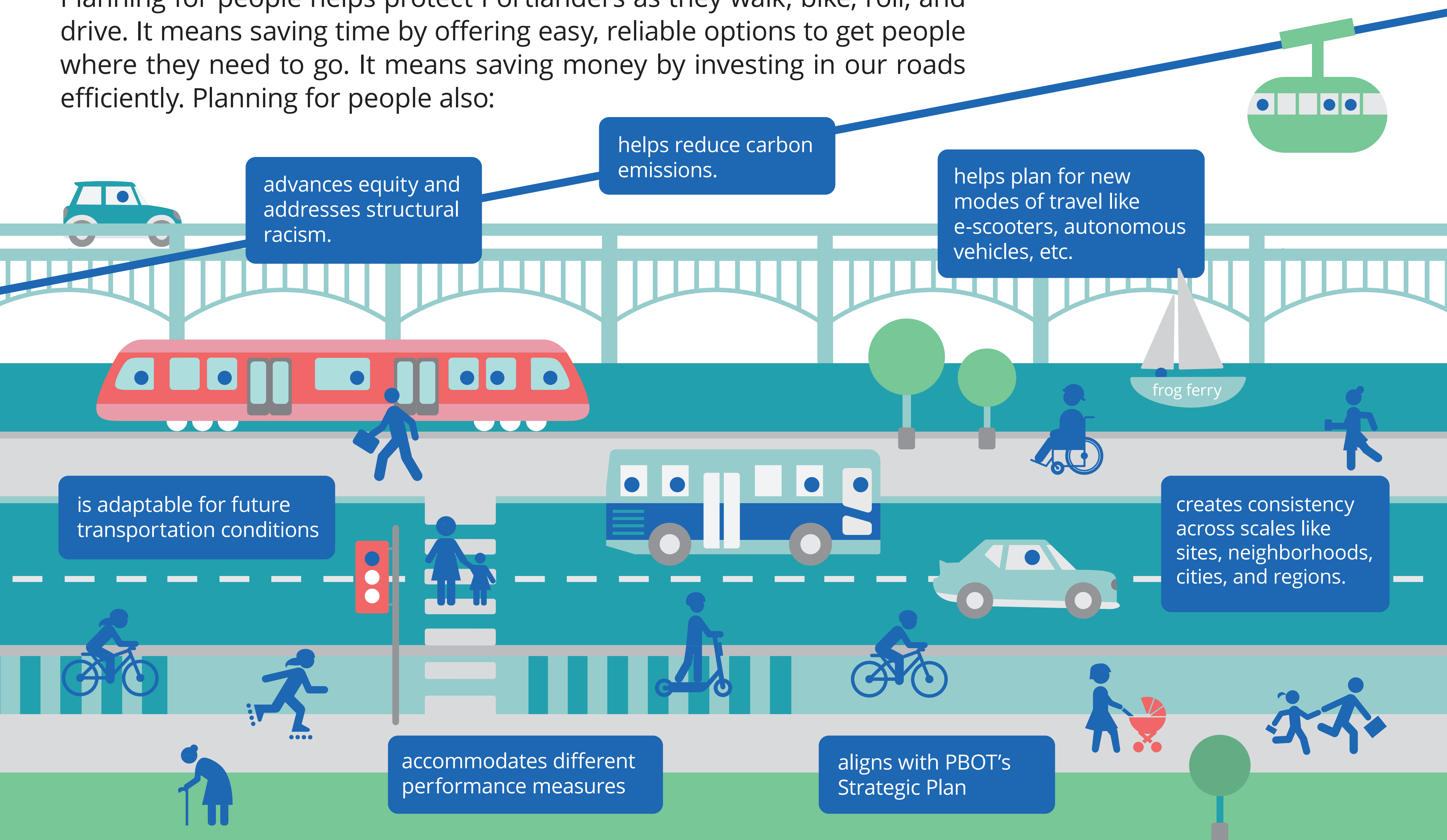


# PORTLAND OREGON'S BUREAU OF TRANSPORTATION

Planning for moving people, not vehicles

## Why plan for people?

Planning for people helps protect Portlanders as they walk, bike, roll, and drive. It means saving time by offering easy, reliable options to get people where they need to go. It means saving money by investing in our roads efficiently. Planning for people also:



## How are we shifting from moving vehicles to moving people?

Industry standard is to calculate trips based on how people move by using general transportation engineering factors.

We have begun starting to collect data on the movement of people (not vehicles) with our primary focus on places where land use generates high demand like town centers.



## How are we funding this shift to people moving?

Some of the funding helping to move people comes from the transportation system development charges (TSDCs). These one-time fees are paid by project developers when they begin a new job.

Transportation facilities like protected bike lanes, sidewalks, access to transit, and other facilities are built using funds from TSDCs and other sources. Those projects are chosen from our TSDC 10-year project list.



## What are some of the challenges we face?

- The Institute of Transportation Engineers (ITE) Trip Generation Manual conversion relies upon several assumptions.
- ITE trip generation data does not provide an accurate of people moving in Portland.
- People movement data collection requires more time and more information to be accurate.
- Context of place matters in trip generation.



**PBOT**  
PORTLAND BUREAU OF TRANSPORTATION

portlandoregon.gov  
@PBOTinfo

**NACTO** designing cities 2019 /  
**/TORONTO**