

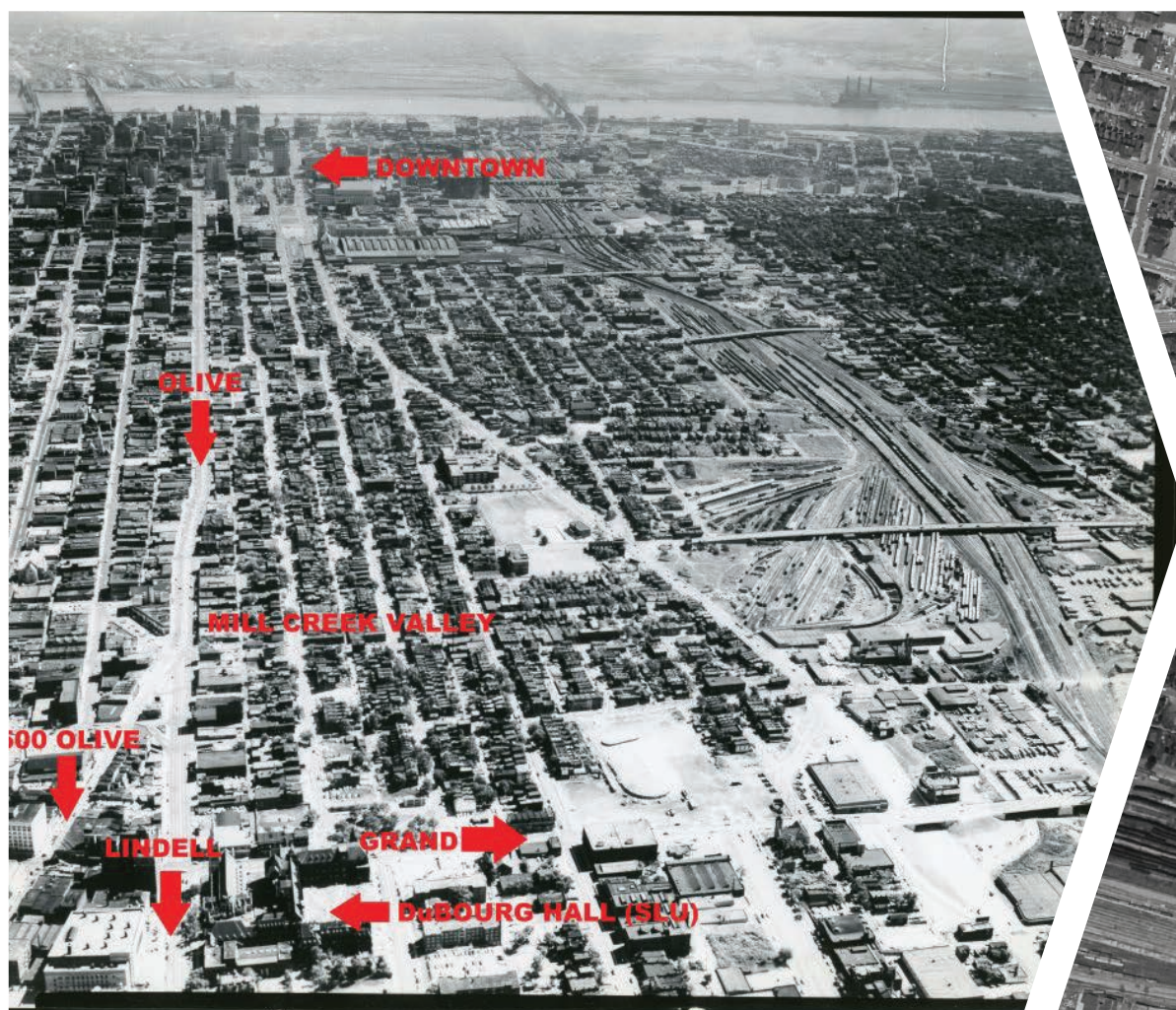


meet

SAINT LOUIS

Rebuilding the Street Grid in West Downtown

Reconnecting Streets Removed by 'Urban Renewal' in 1959



The Mill Creek Valley Neighborhood in the 1930's.



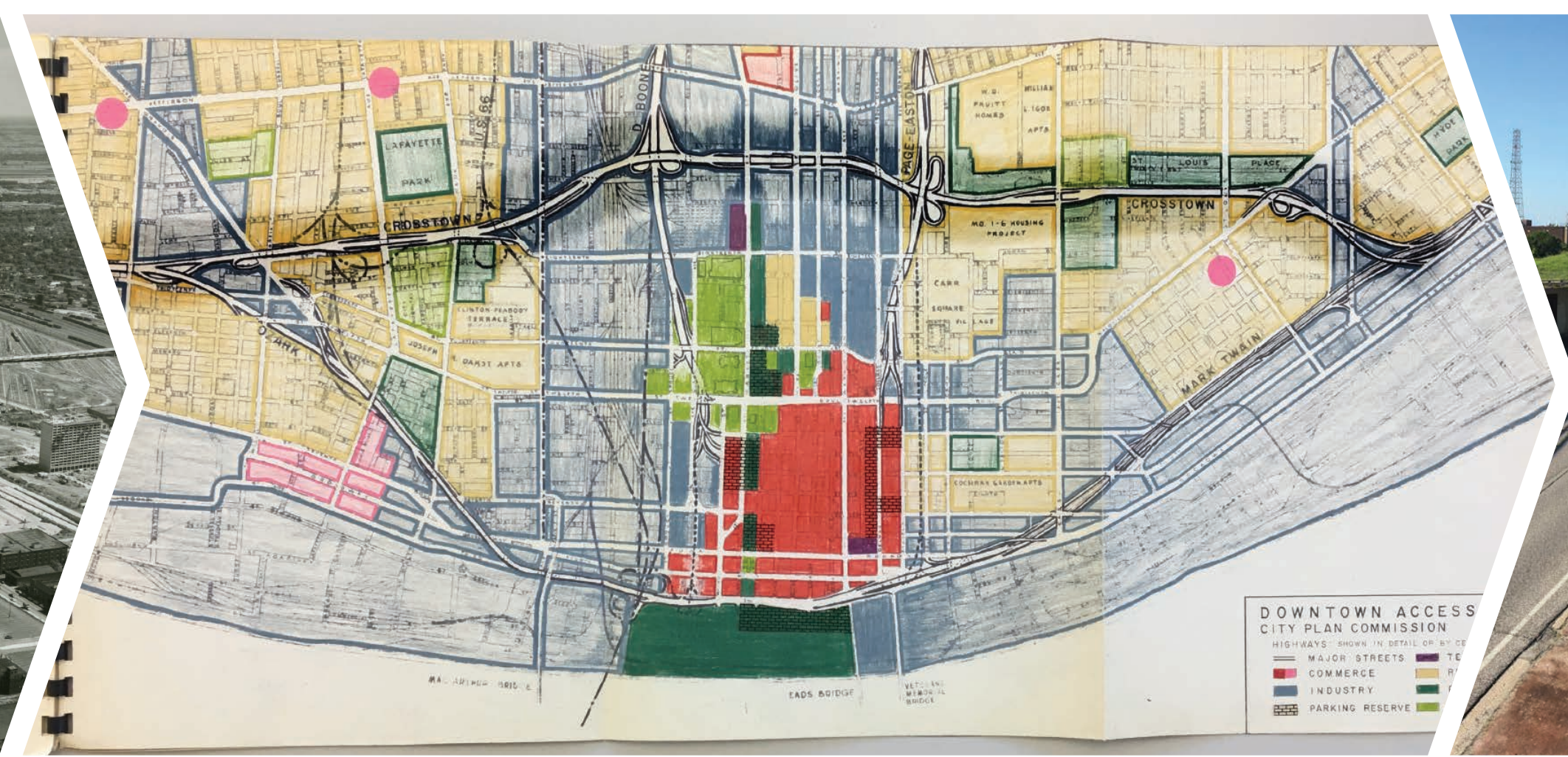
1955 aerial of the of the Mill Creek Valley.



Mayor Raymond Tucker views the area in 1956.



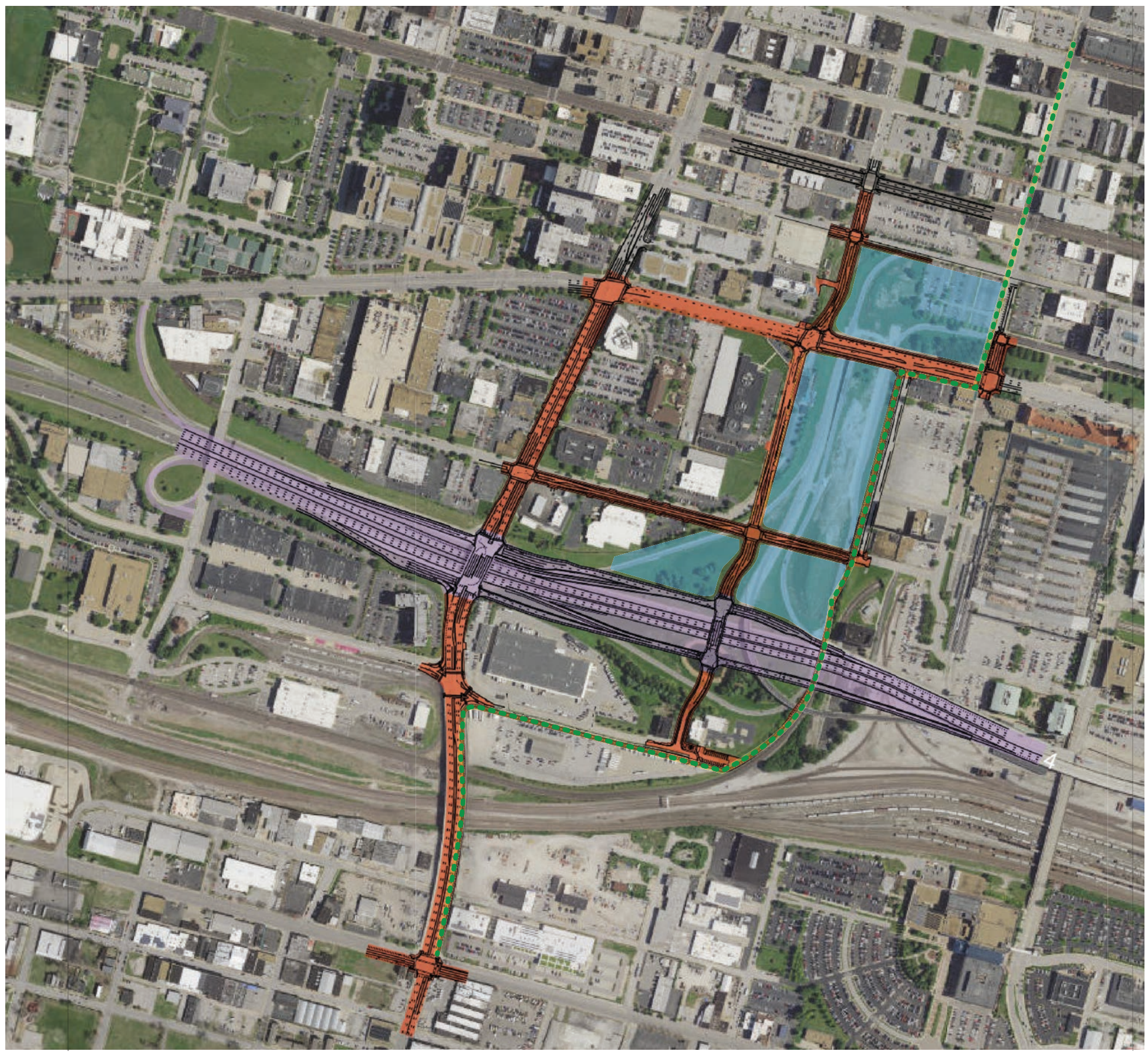
Post neighborhood clearance in 1965.



Mostly unbuilt I-75 Downtown Highway



REPLACING 1960'S HIGHWAY INFRASTRUCTURE WITH AT-GRADE STREETS



Project Features

- 1 Reconnected east / west street.
- 1 Reconnected north / south street.
- 6 New standard 4 way intersections.
- 1 New cycle track and off-street north / south bike route.
- 30 Acres of former highway right-of-way available for development.
- 7 Legacy highway access ramps removed.
- 60 Million in street reconstruction and streetscaping.
- 0 Building demolition.