

Walking and Cycling Provisions for Work Zones

NACTO Designing Cities 2017

Nov 1, 2017



Dylan Passmore, MScPI, P.Eng.
Senior Design Transportation Engineer

Growing Fast

- ~4.5% population growth
- 70 rezoning applications 2017
- 8600 development and building permit applications in 2017



Context

Construction and Event Zone are Common

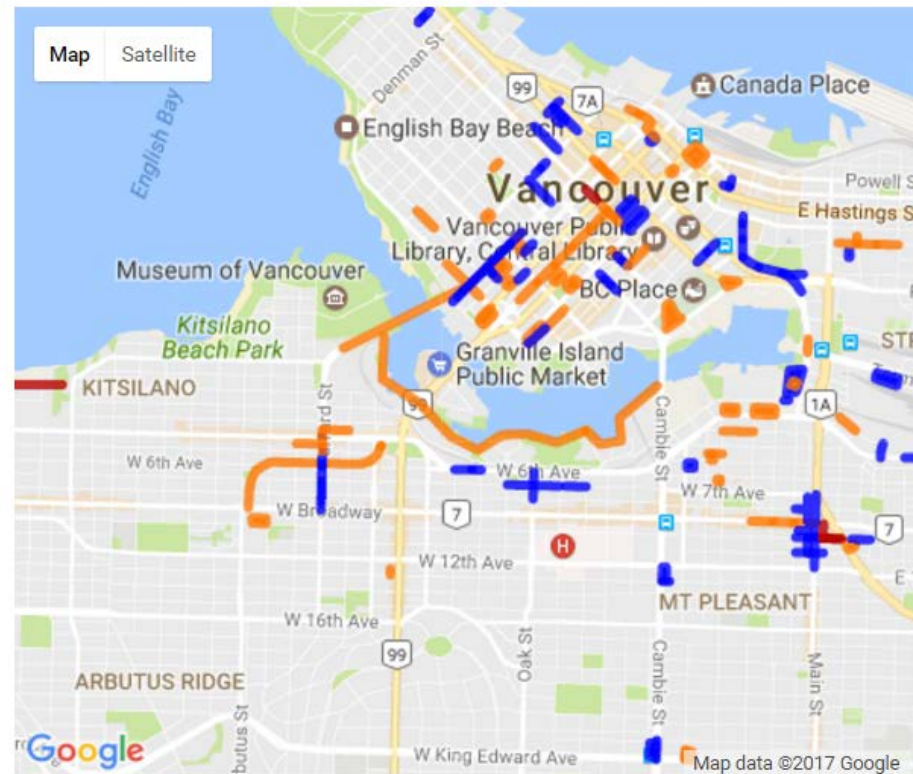
On any given day, there can be **200–300 or more** crews working around the city

- Developments
- Utilities
- Street repair
- Filming
- Special events

Road closures and construction projects

Find information about road closures and traffic delays due to road construction projects and

Select a project, marked with a coloured line on the map below, for more details about it.

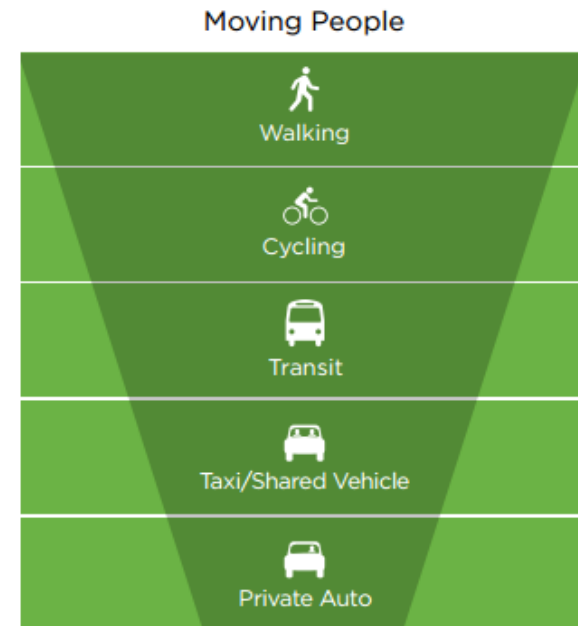


Legend

- Full road closure
- Travel or parking lane closure
- Upcoming closure



Hierarchy of Modes:



Policy for Walking and Cycling:

Improve and enforce measures to maintain **accessibility around construction zones** and special events

Walking and Cycling

Make walking
safe, convenient & delightful.

Make cycling **safe,**
convenient, comfortable
& fun for people of
all ages and abilities

Context

Construction Zones Have Higher Safety Risks



Construction on bike routes
can **double** the risk of **injury**

(Teschke et al., 2012)

Context

Minimal Construction Guidance for Protected Bike Lanes



Traffic Management Manual for Work on Roadways

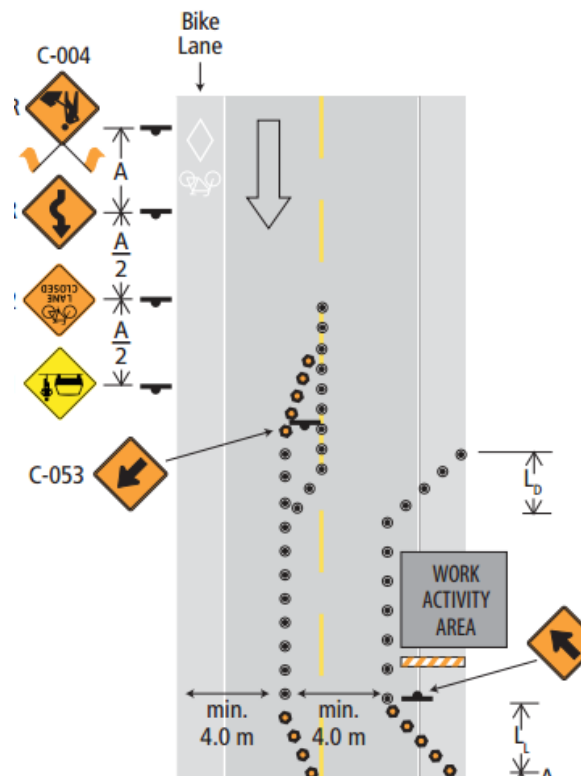
2015 Office Edition
Interim



Ministry of
Transportation
and Infrastructure



Figure 18.4: Bicycle Lane Closed – Share the Road



Guidance limited mostly for painted bike lanes on major streets

Context

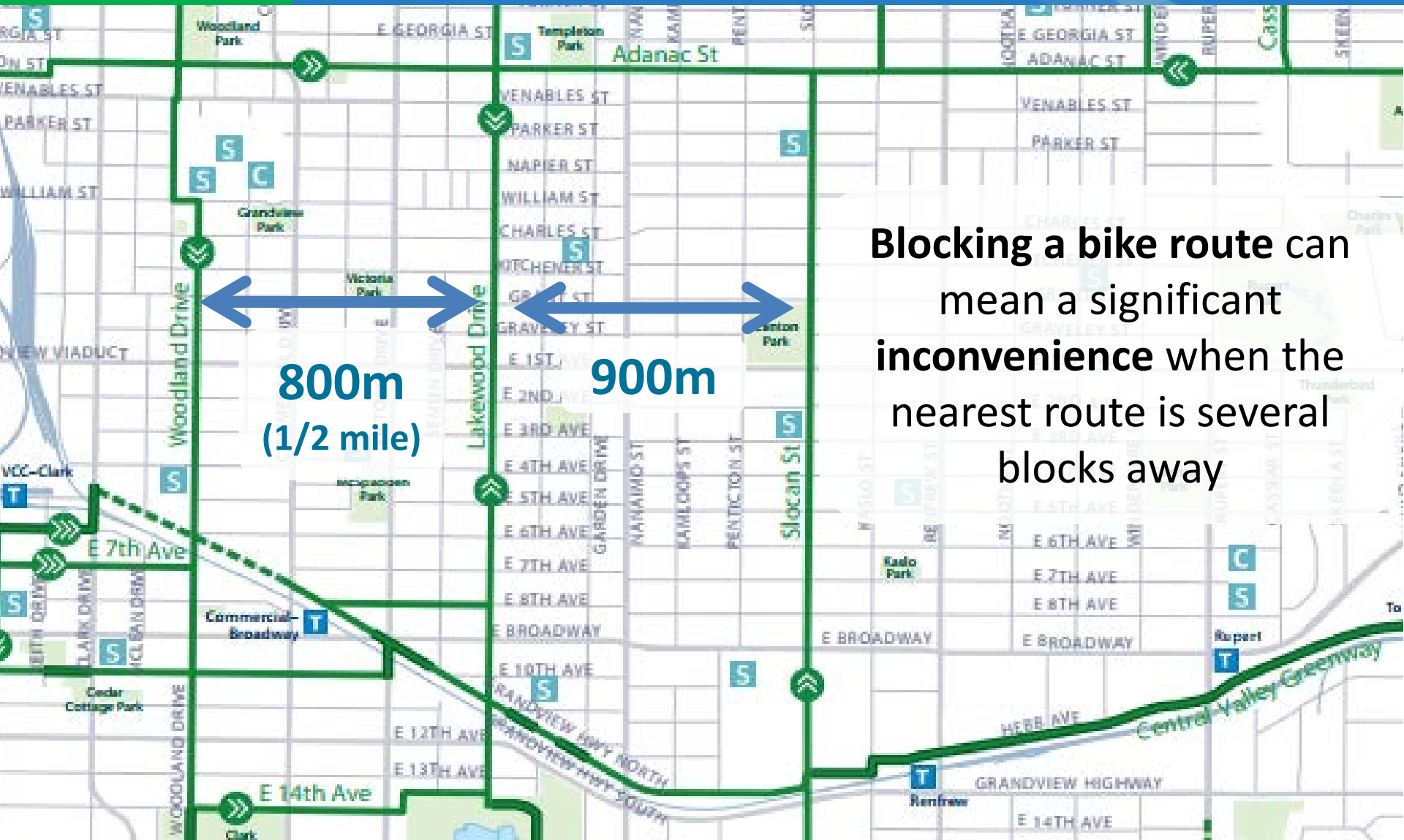
Detours Can Cause Significant Inconvenience



Blocking a sidewalk may cause a person to have to cross a busy roadway multiple times.

Context

Detours Can Cause Significant Inconvenience



Issues

Issues

Missing Walking Provision



Issues

Unsafe Temporary Conditions After End of Workday



Issues

Signage Unclear / Inconsistent



Issues

Signage Poorly Located



Issues

Unnecessary Dismount



Issues

Dismount Zones Not Effective



Current and Emerging Practices

Sidewalks



1. Maintain
Accessible
Sidewalk
1.8m (6ft) min

2. Maintain Accessible Sidewalk Using Road Space



Sidewalks



3. Maintain sidewalk at least on one side of street

Construction on Cycling Routes Emerging Guidelines

- “Every effort should be made to allow passage through construction.”
- Outlines **requirements** for various **scenarios** on bike routes.
- Updating in 2017 with emphasis on:
 - AAA & Major Cycling Routes
 - Preferred Measures



Cycling Routes



Extra attention is needed for All Ages and Abilities (AAA) and major routes for a continuous & safe experience

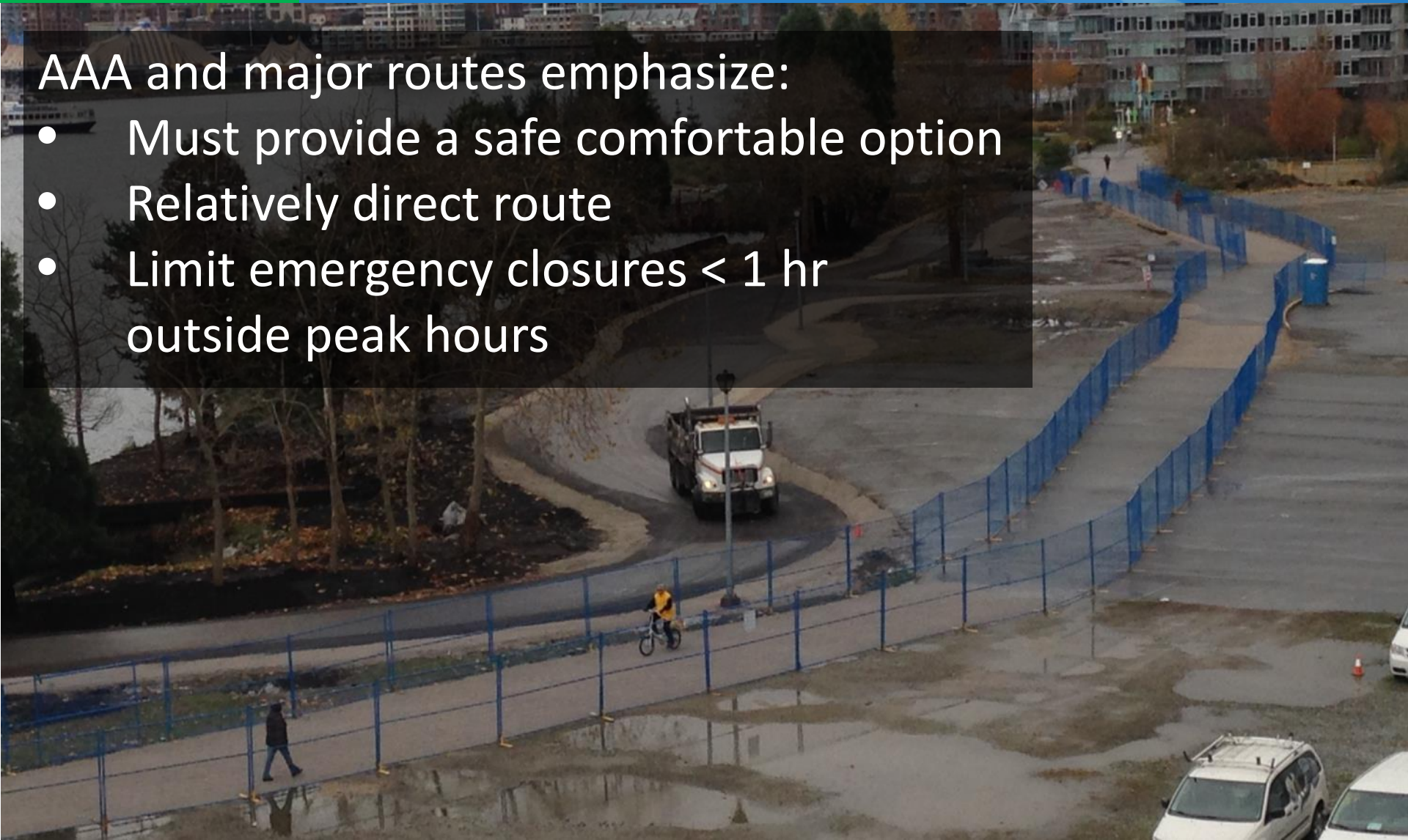
Cycling Routes



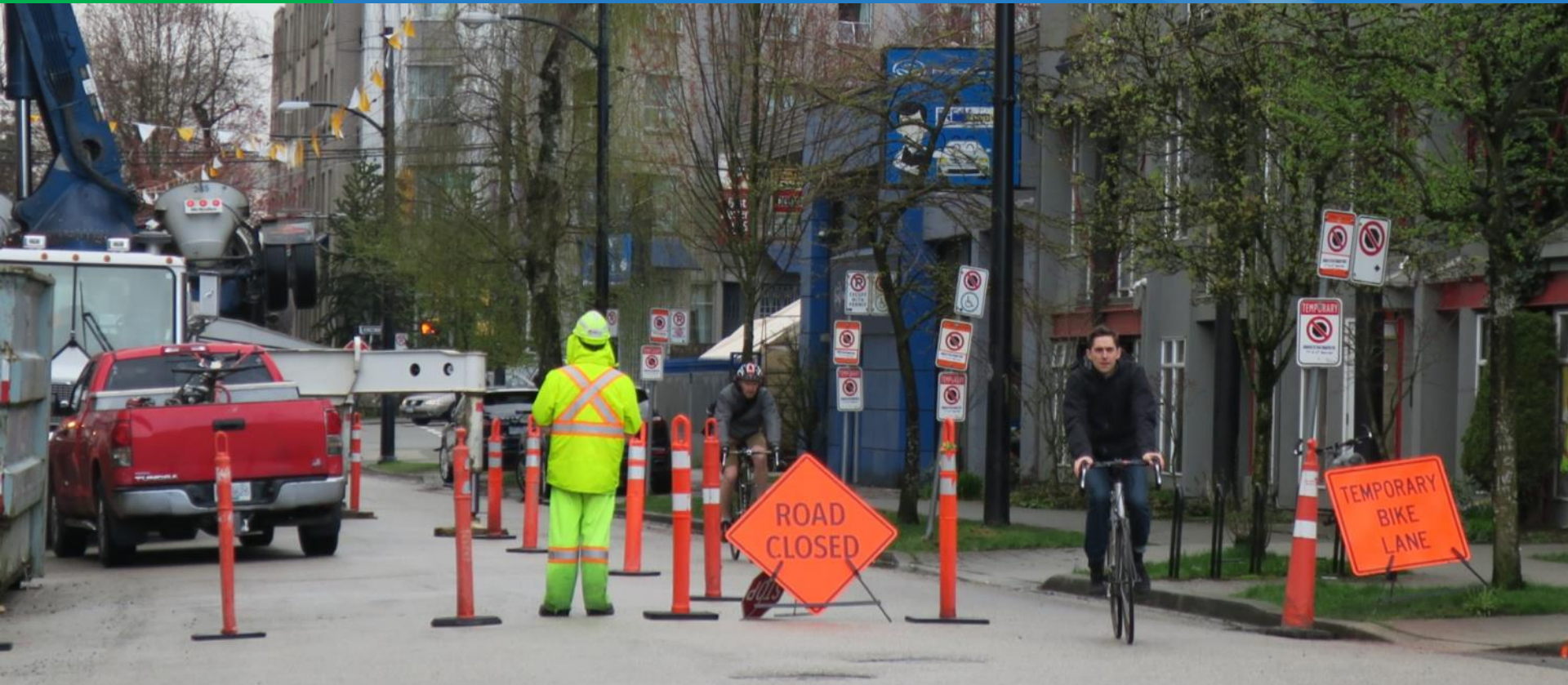
Cycling Routes

AAA and major routes emphasize:

- Must provide a safe comfortable option
- Relatively direct route
- Limit emergency closures < 1 hr outside peak hours



Cycling Routes



1. Maintain Access through Site

~ 1.5m (5ft) per direction of travel

Cycling Routes



2. Use road space to create bike lane

- Use appropriate barriers to reallocate travel or parking lane

Cycling Routes



2. Use road space to create bike lane

- Use appropriate barriers to reallocate travel or parking lane



3. Share Sidewalk Space

- Delineation is often required



3. Share Sidewalk Space

- Delineation is often required



3. Share Sidewalk Space

- Shared space is sometimes OK



4. Sign Detour

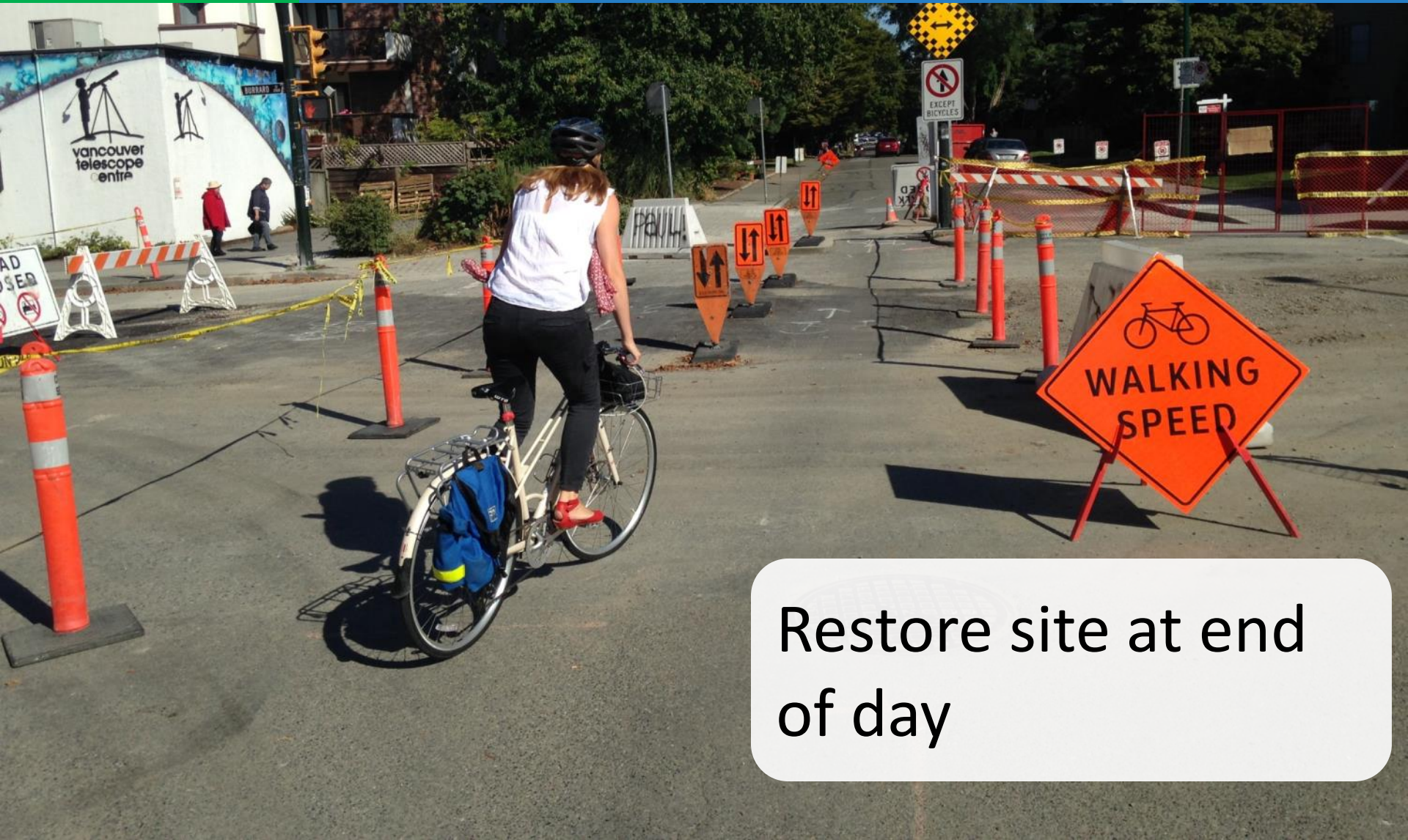
- Only if all traffic is banned
- Minimize length
- Use low volume streets
- Ensure adequate crossings

4. Sign Detour

- Sometimes a temporary pathway is needed



Cycling Routes



Restore site at end
of day

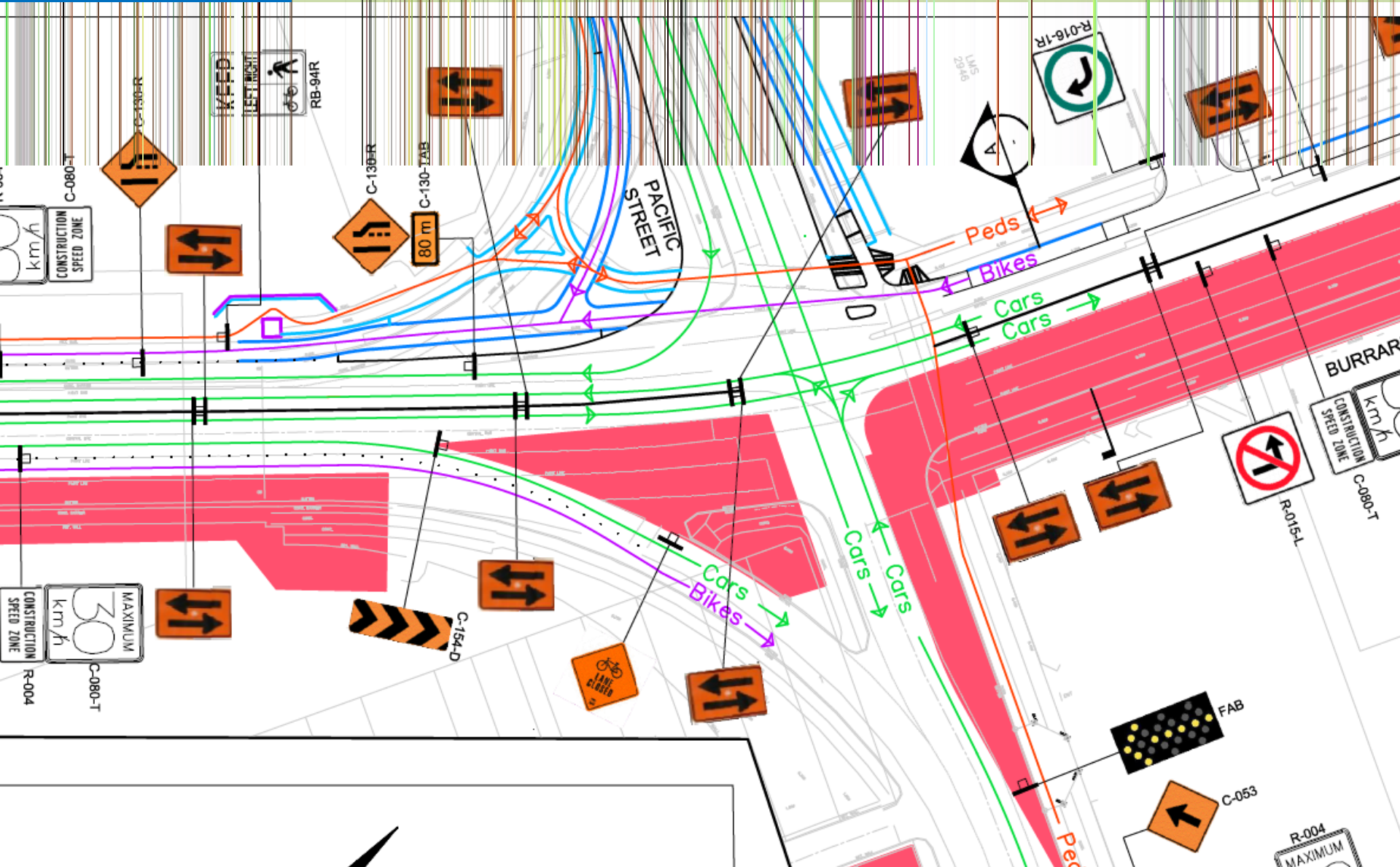
Cycling Routes



Restore site at end
of day

Example Projects

Burrard Bridge



Burrard Bridge



Example Projects

Burrard Bridge



Example Projects

Dragon Boat



Example Projects

Dragon Boat





Questions and Discussion

Dylan.Passmore@vancouver.ca



bike vancouver