

# Rapid Growth: Maintaining Access while Accommodating Construction



NACTO Designing Cities Conference  
Kevin O'Neill, AICP, Street Use Director  
November 1, 2011



**Seattle**  
Department of  
Transportation

# Our mission, vision, and core values

**Mission:** deliver a high-quality transportation system for Seattle

**Vision:** connected people, places, and products

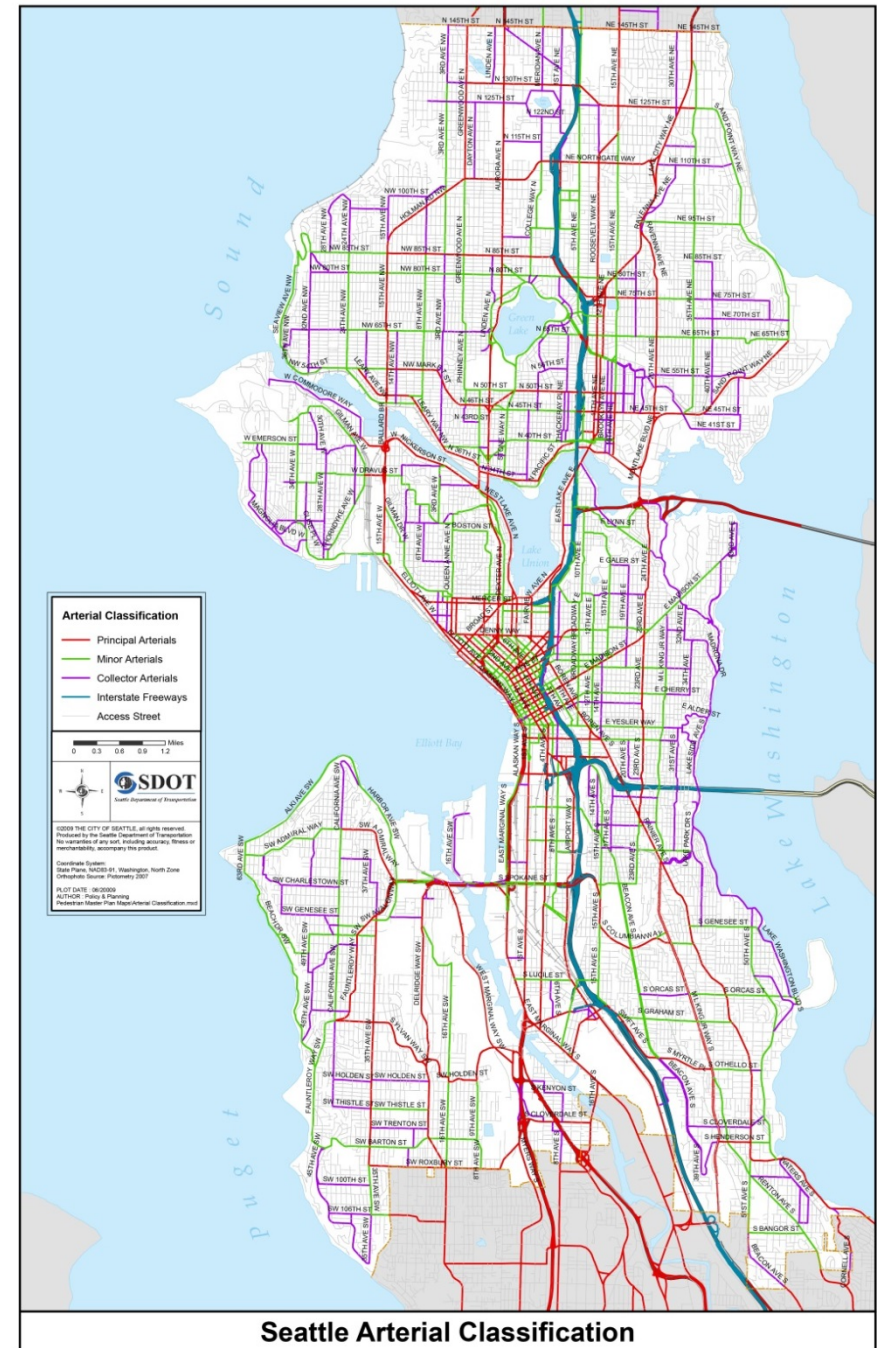
Committed to **5 core values** to create a city that is:

- Safe
- Interconnected
- Affordable
- Vibrant
- Innovative

For **all**

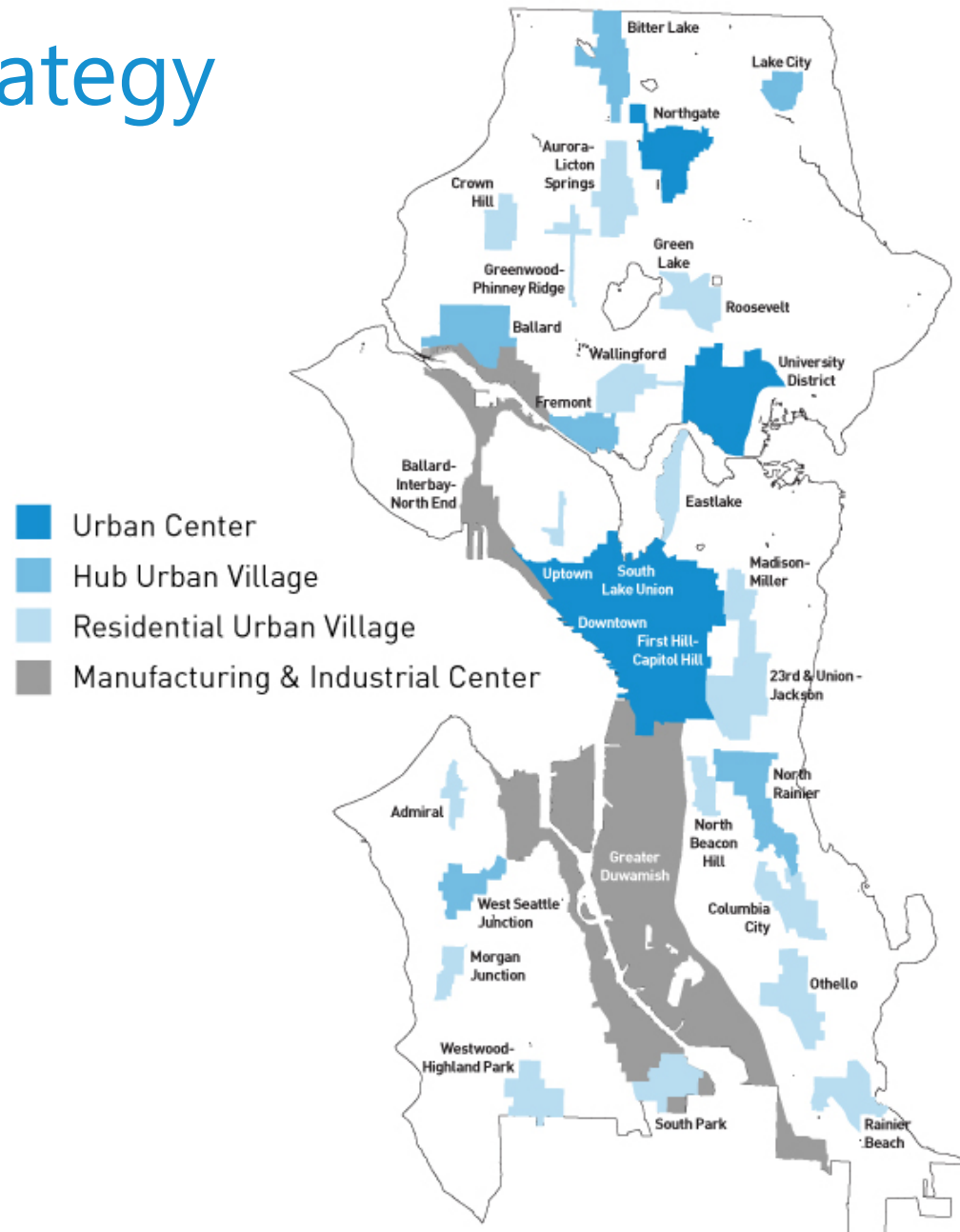
# Seattle's street system

- System is constrained by geography (water, hills)
- Arterials are narrow and lots of competition for space



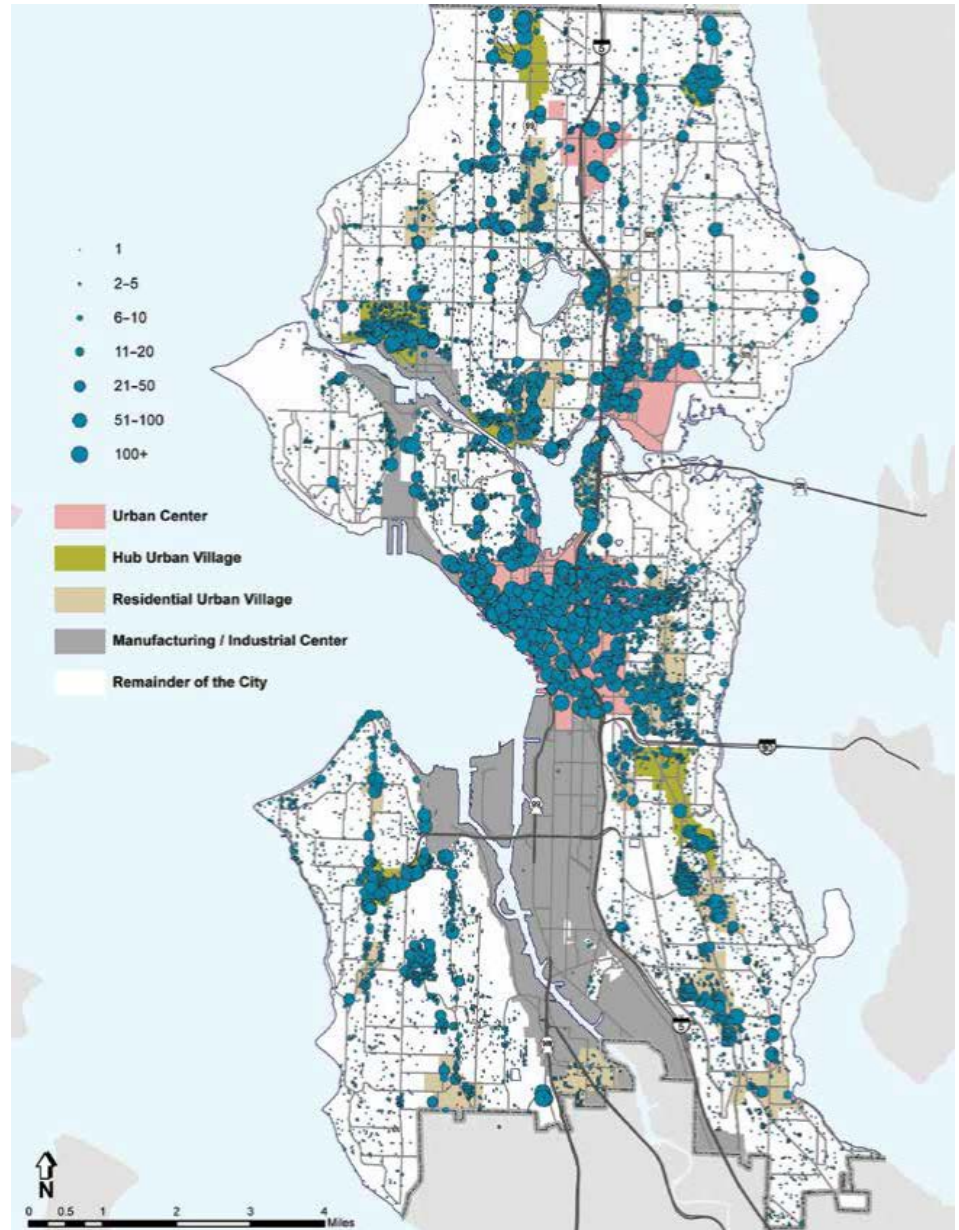
# Seattle's growth strategy

- Comprehensive Plan focuses growth:
  - Urban centers (focused in Center City)
  - Manufacturing & industrial centers
  - Urban villages
- 80% of city growth in centers/villages since 1994
- Future growth targets 2015-2035
  - 70,000 additional households
  - 115,000 additional jobs



# Recent growth trends

- City added 66,000 net new housing units in last 10 years
  - Another 21,000 in the pipeline
- City grew by more than 100,000 people since 2010 (current population 714,000)
- Between 2006 and 2015, city added 46,000 additional jobs



# SDOT actions to manage growth

## Better Coordination

- ☐ Create Development Review function
- ☐ Establish Project and Construction Coordination Office

## Clarify the Rules

- ☐ Update the right-of-way improvement manual
- ☐ Improve safety for pedestrians in construction zones
- ☐ Update pavement opening and restoration rule
- ☐ Ensure transparent and predictable enforcement

## Update Rates and Fees

- ☐ Revise permit issuance and inspection rates
- ☐ Update use fee model



# Development review program

- Better align major private development projects and SDOT policies
- Goals:
  - Engage developers earlier in the SDOT permitting process
  - Mediate between land use and transportation codes
  - Identify conflicts and opportunities with SDOT capital projects and traffic operations



# Project and Construction Coordination Office

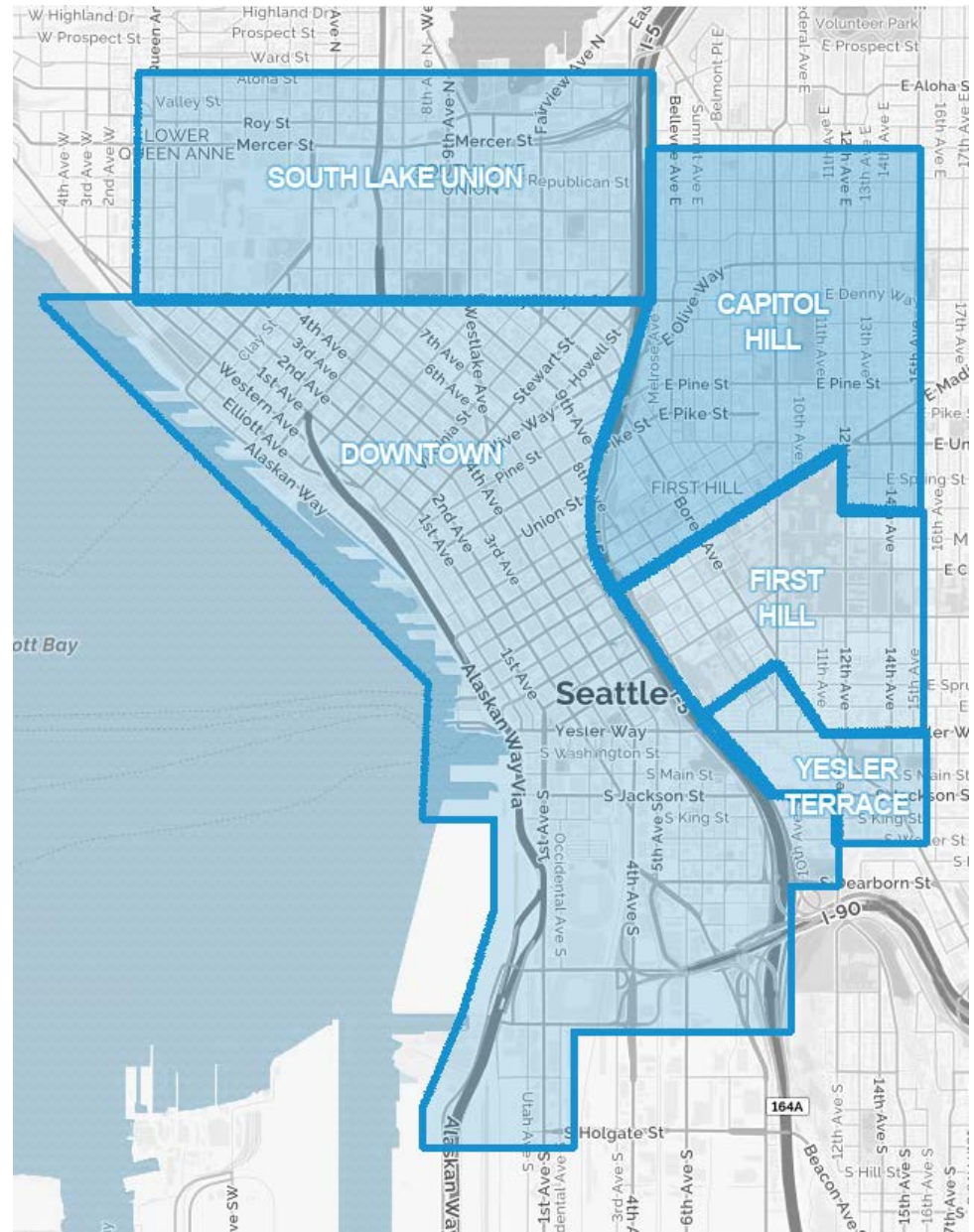
- Strategic and tactical construction coordination
- Goals:
  - Protect the integrity and life cycle of assets
  - Reduce construction-related impacts to the ROW
- Technology improvements
- Policy and governance updates





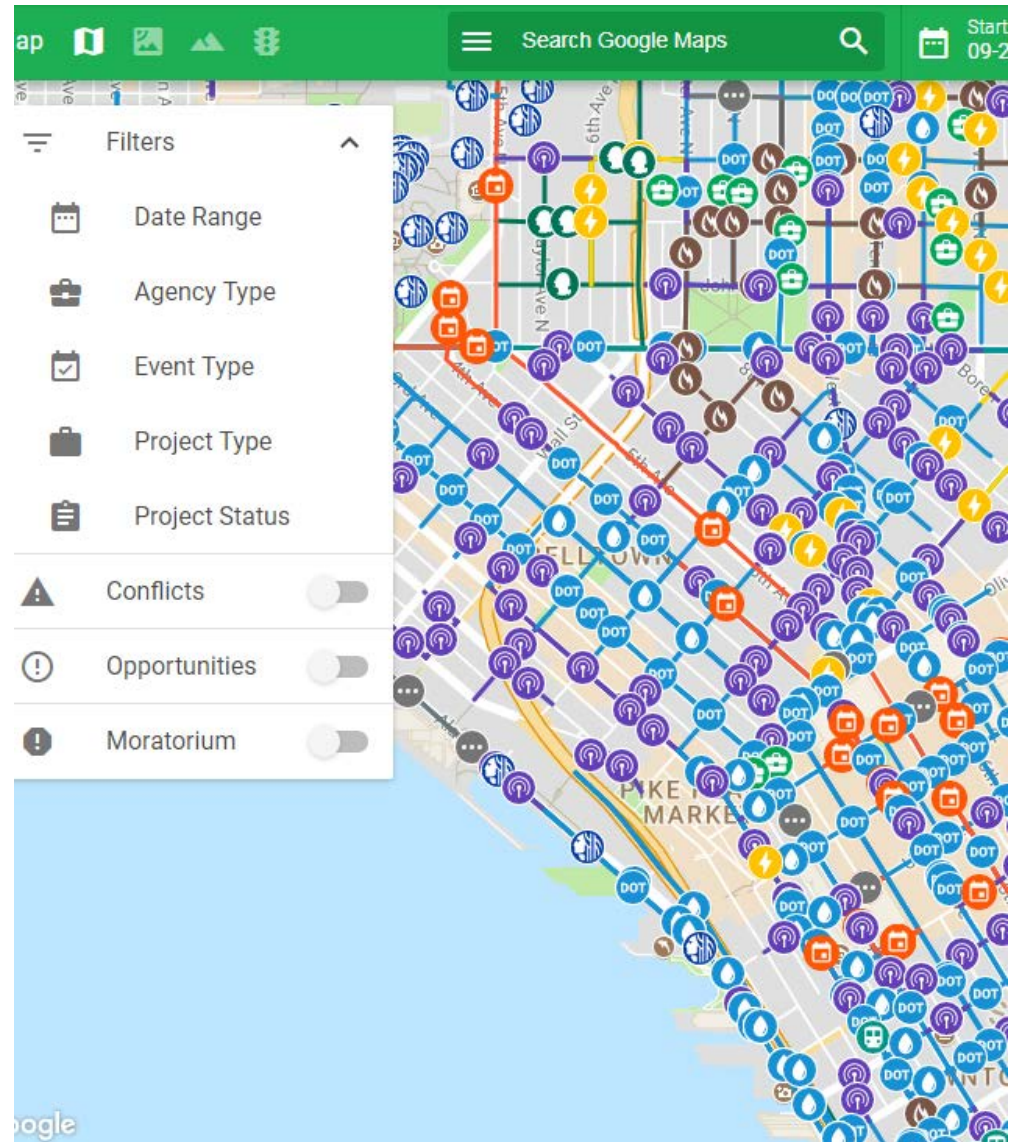
# Access Seattle

- Active, tactical construction management
  - Maintain access
  - Minimize ROW impacts
- Identify and proactively mitigate potential conflicts
- Facilitate contractor / neighborhood dialog to reduce impacts



# DotMaps

- Newly implemented right-of-way management system
- Identifies conflicts and opportunities for coordination
- Assists in capital planning and council district city project reporting



# Project coordination

Conven3 project manager meetings:

- Coordinate schedules
- Identify opportunities
- Holistic planning

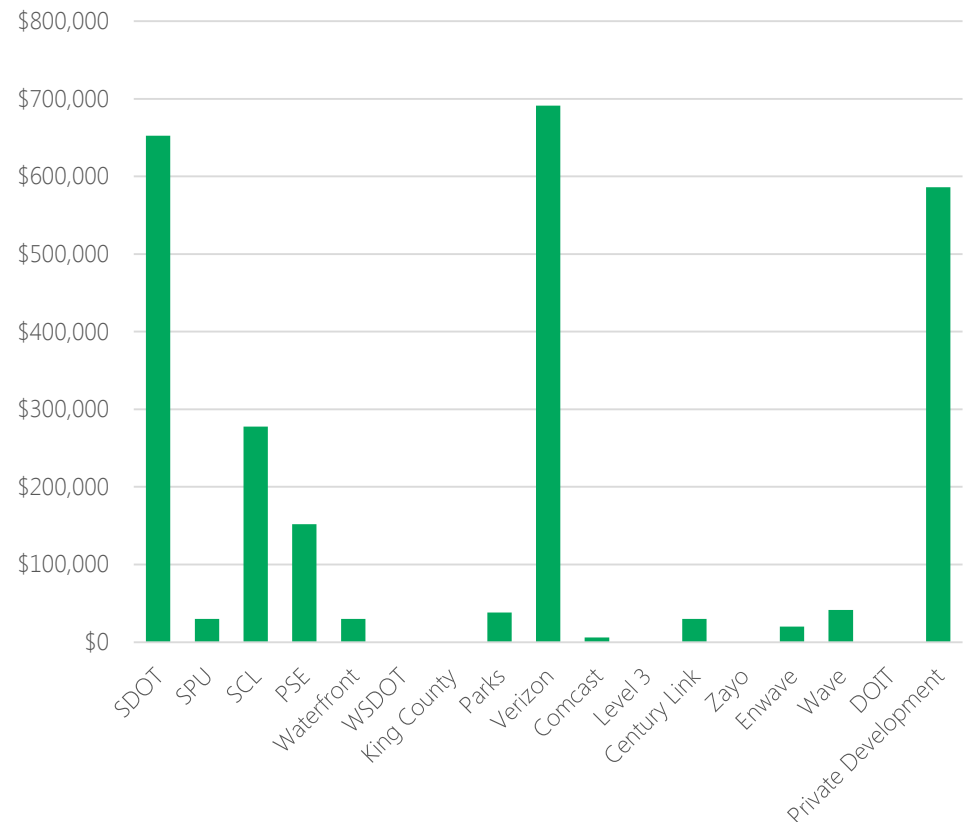
Ensure smart sequencing:

- Dig the deepest hole first
- Share access to trenches
- Save paving for last

Results

- Saved more than \$2.5M do date
- An average of 51 days less disruption per coordination group

Savings By Agency





# Pedestrian Director's Rule

- Prioritize pedestrian access in and around construction sites.
- Goals:
  - Reaffirm commitment to Vision Zero
  - Enhance pedestrian mobility access through prioritization and consistency of traffic control
  - Provide contractors with guidelines for construction site management specifically for pedestrian access





# Transparent and predictable enforcement

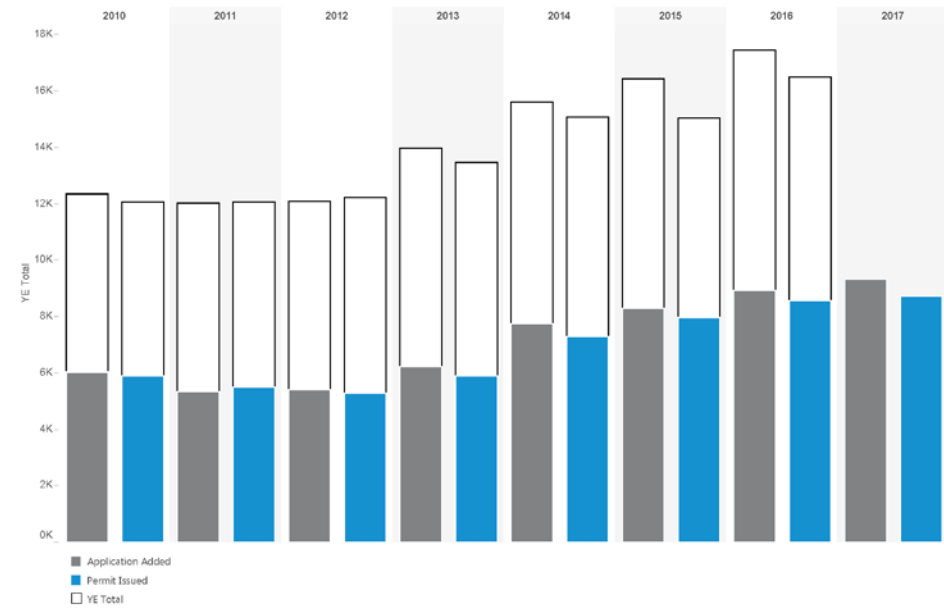
- Ensure inspection priorities are aligned with SDOT policies.
- Goals:
  - Minimize impacts to the greatest number of right of way users.
  - Ensure compliance with City standards
  - Utilize all available enforcement tools consistently



# Issues/challenges

- Pace of growth—chasing a moving target
- Ensuring SDOT can complete our capital projects (competition for ROW)
- Updating use/occupancy and enforcement fees to meet city objectives
- Multiple departments issue city permits—ongoing coordination issues

Permit issuance compared to total applications

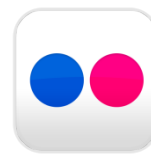


# Questions/Discussion

kevin.oneill2@seattle.gov | (206) 386-4556

[www.seattle.gov/transportation/stuse\\_home.htm](http://www.seattle.gov/transportation/stuse_home.htm)

[www.seattle.gov/transportation](http://www.seattle.gov/transportation)



**Seattle**  
Department of  
Transportation