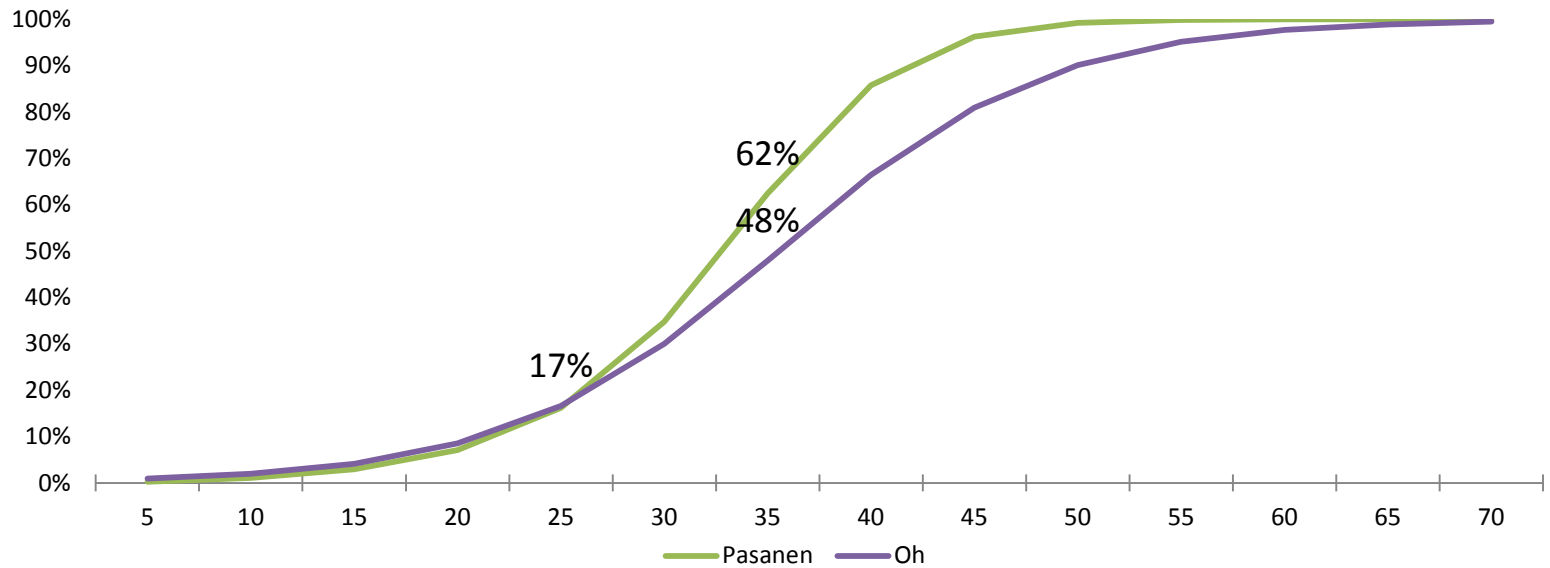
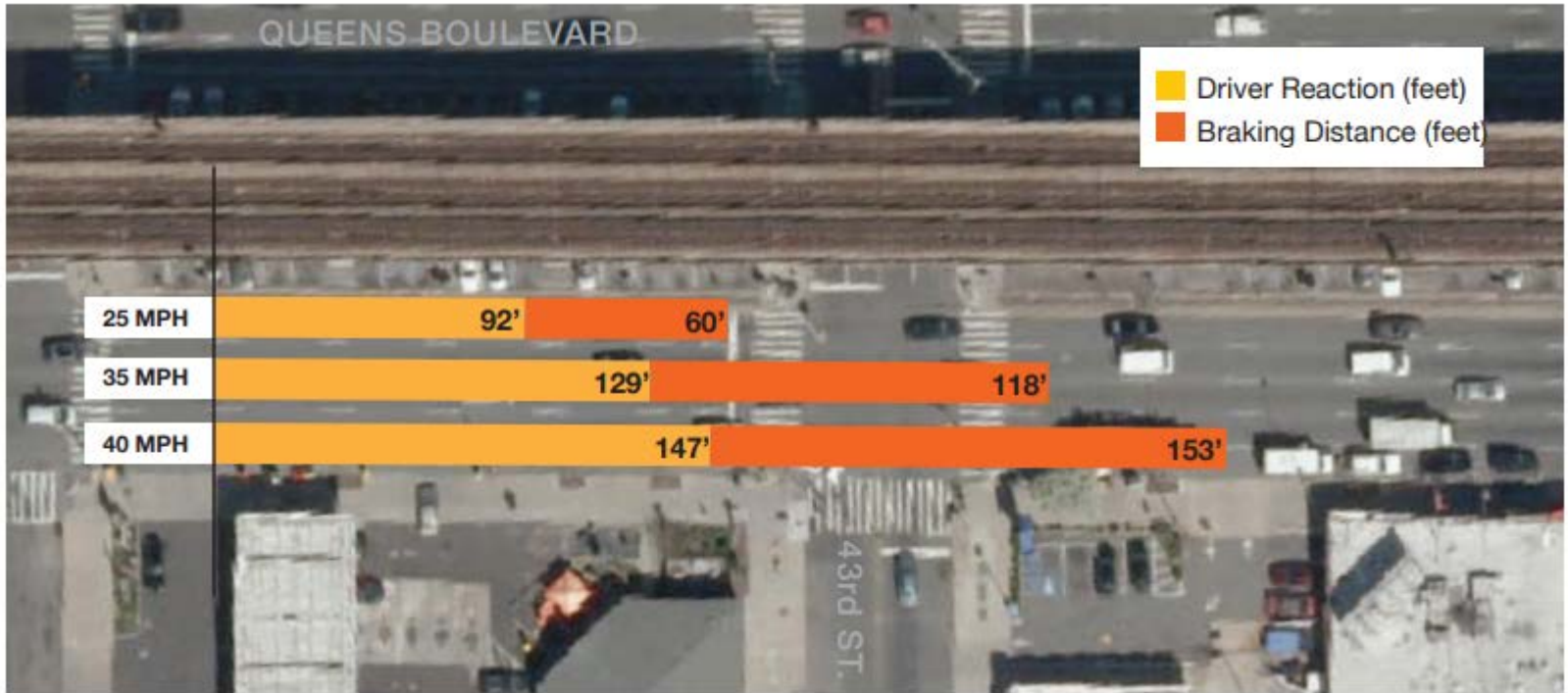




NEW YORK CITY'S SPEED MANAGEMENT STRATEGIES





Comparing Height of Fall to Speed at Impact



Source: Ellis Medical Center











더욱 안전한 뉴욕 시

속도
제한

25

VISION ZERO

ЗА БЕЗОПАСНЫЙ НЬЮ-ЙОРК

ОГРАНИЧЕНИЕ
СКОРОСТИ

25

VISION ZERO

POU YON VIL NEW YORK
SAN OKENN RISK

VITÈS
LIMIT

25

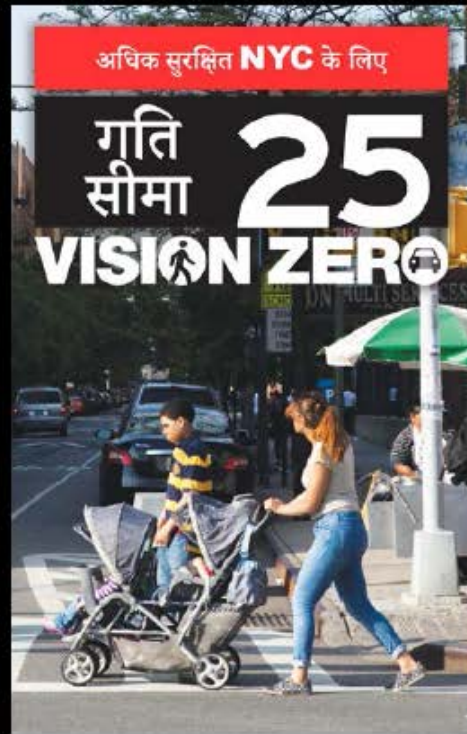
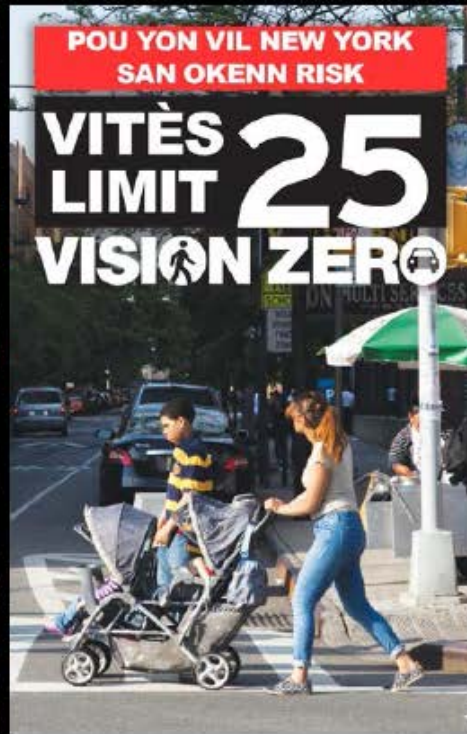
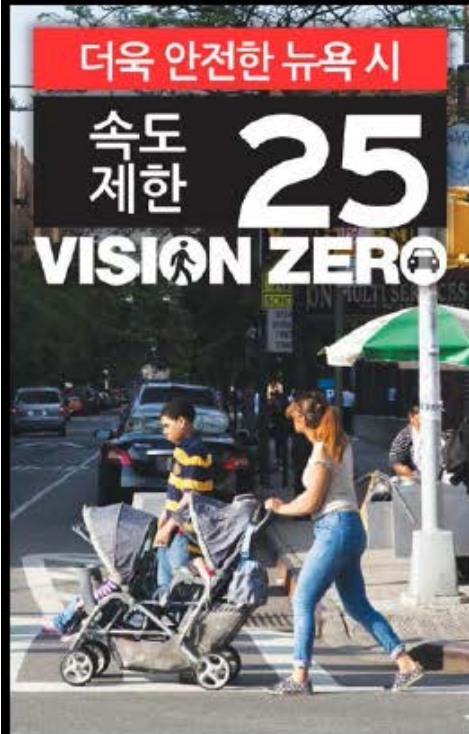
VISION ZERO

अधिक सुरक्षित NYC के लिए

गति
सीमा

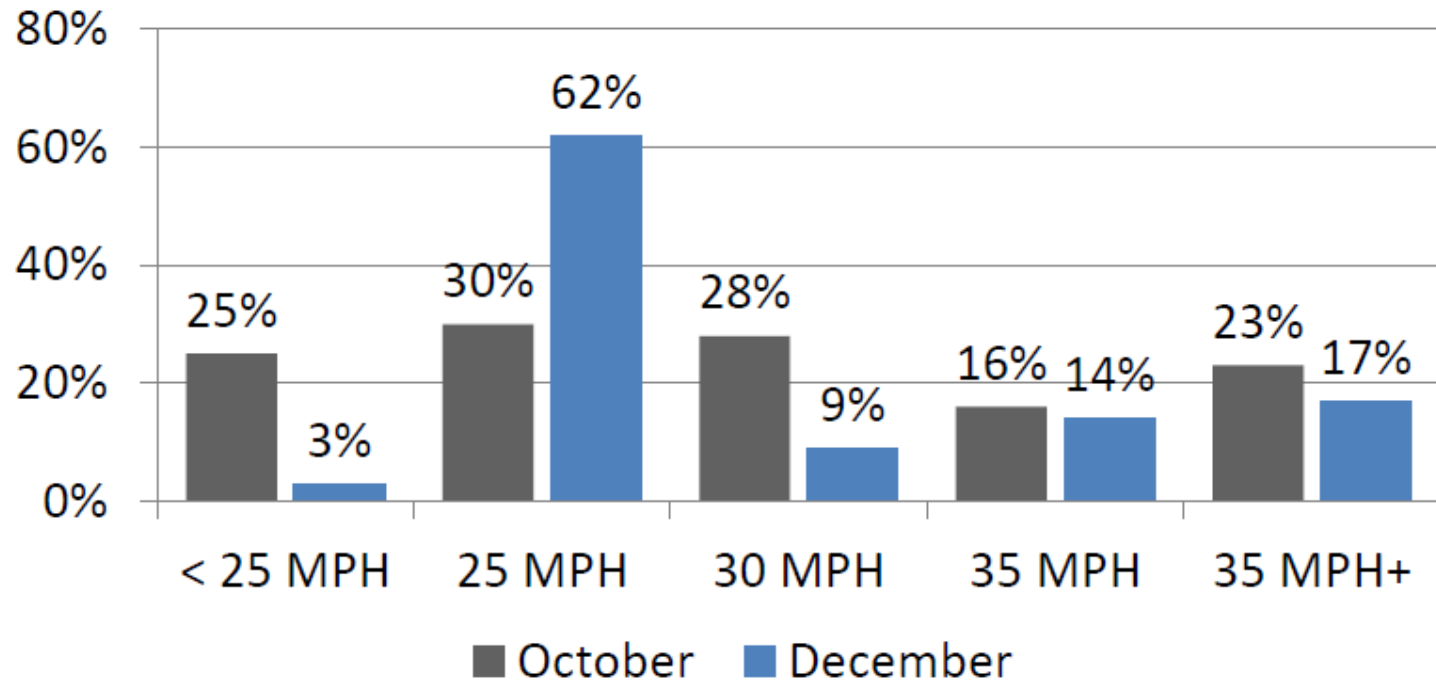
25

VISION ZERO





Drivers: What do you think the speed limit is in New York City?
Please enter a number in MPH.



From October through December, knowledge of the speed limit doubled from 28% to 62%, and the median speed dropped 5 MPH.



FOR A SAFER NYC

SPEED
LIMIT 25

VISION ZERO

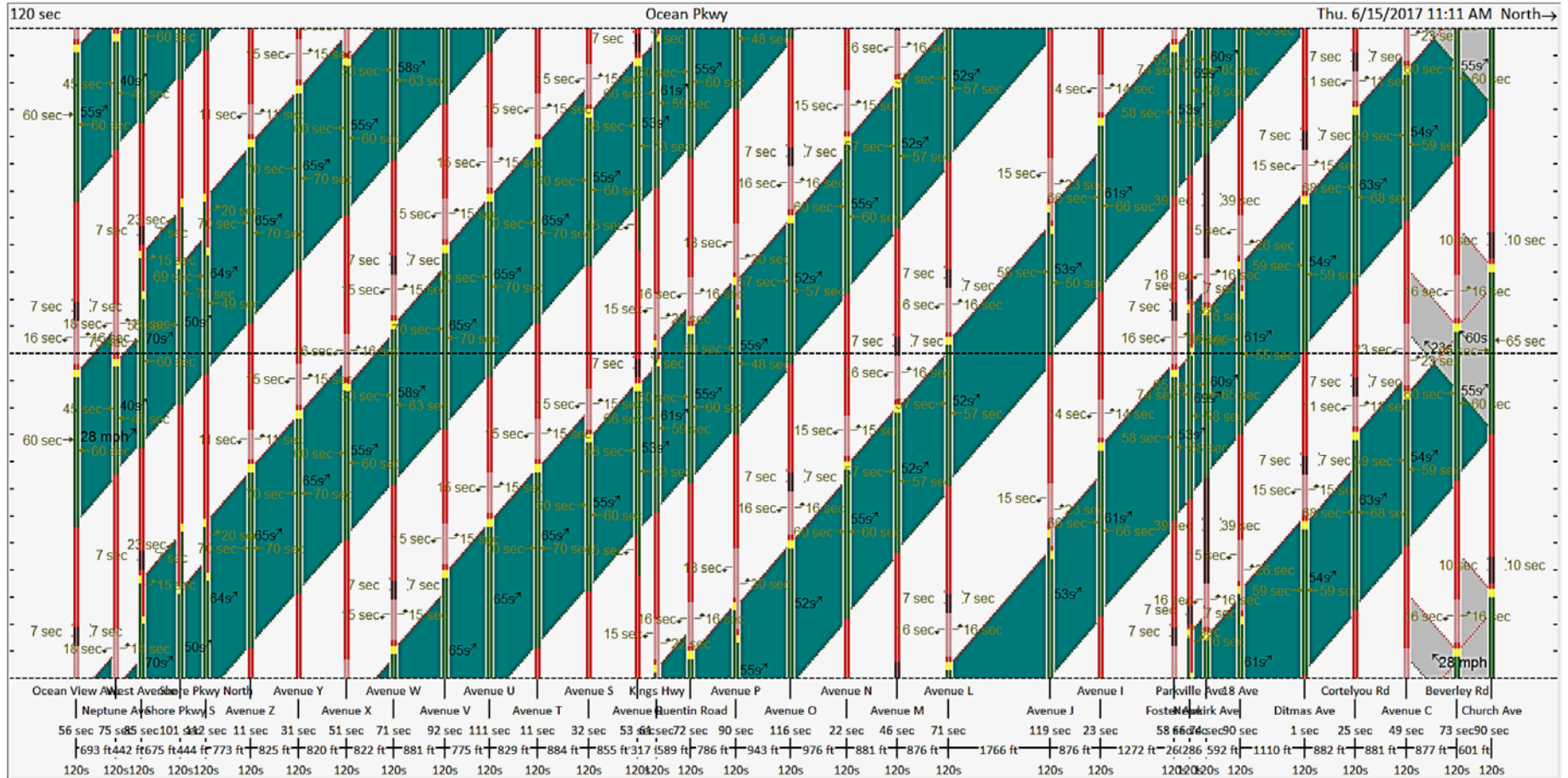
**Driving isn't easy,
but saving a life is.**

Slow down.

**VISION
ZERO**

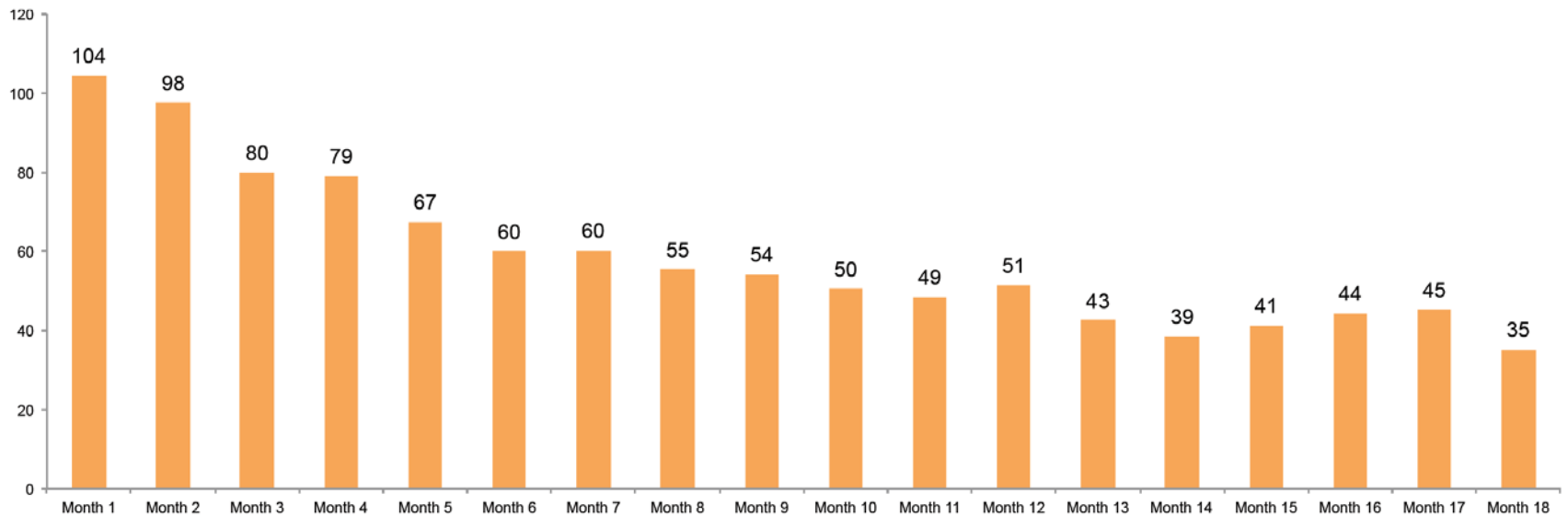


Off Peak Signal Retiming: 300 Plus Miles completed

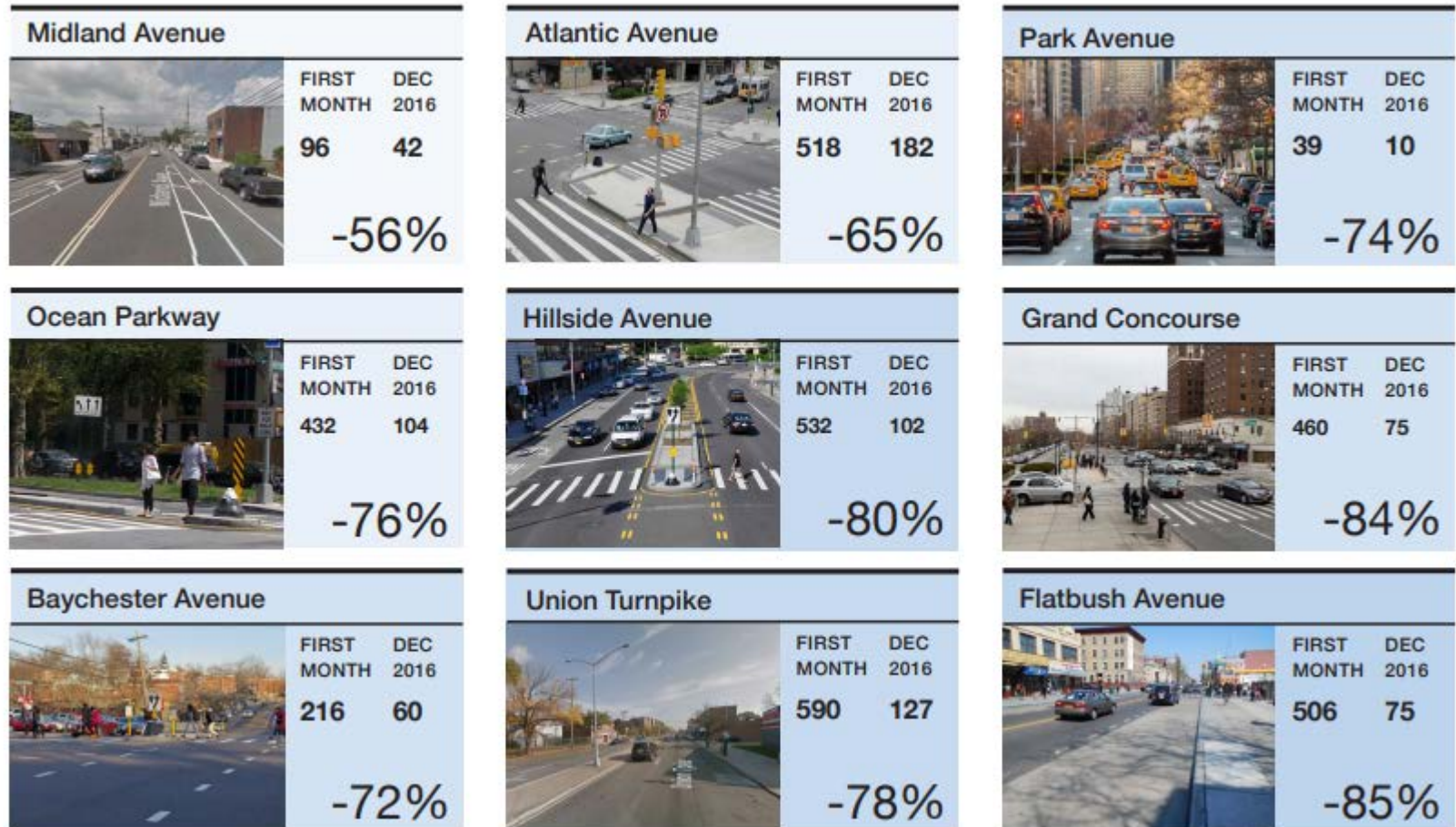




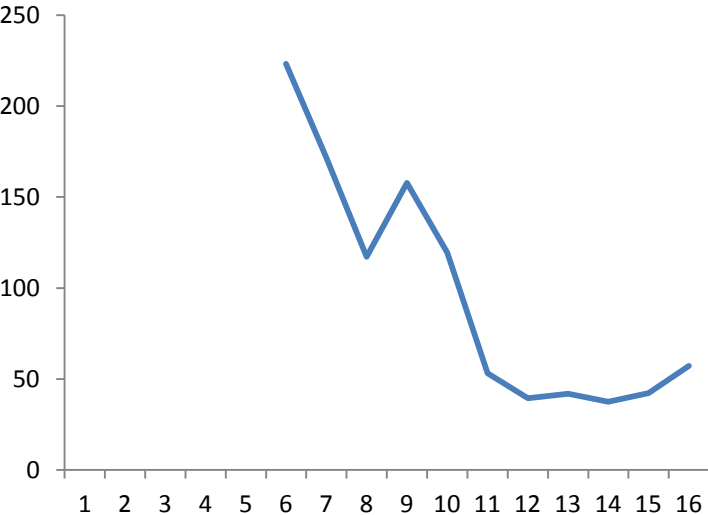
AVERAGE DAILY VIOLATION AT TYPICAL SPEED CAMERA LOCATION BY MONTH



DECLINE IN SPEEDING DURING SCHOOL HOURS ON KEY CORRIDORS (DAILY AVERAGE)



Linden Blvd, Daily Violations



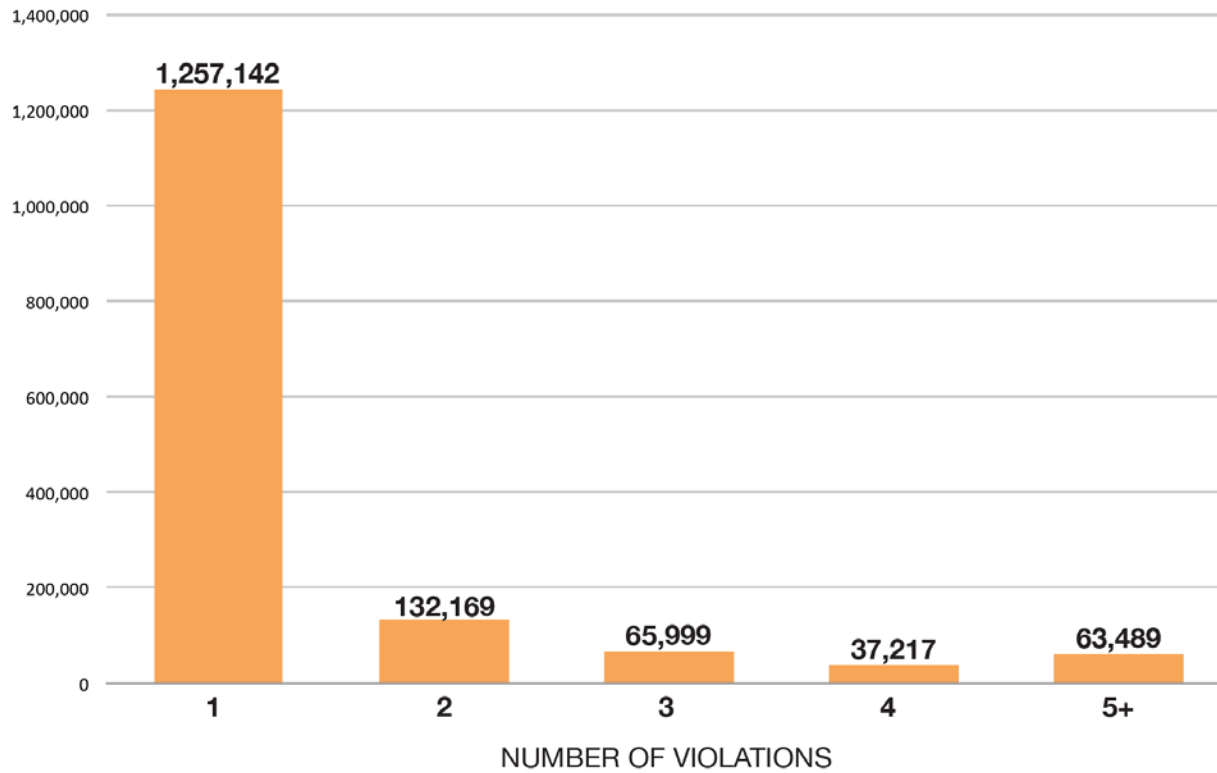
**BEFORE/AFTER CHANGE IN CRASHES
AND INJURIES IN SCHOOL ZONES
WITH SPEED CAMERAS**

(Before: 3 years prior to installation)

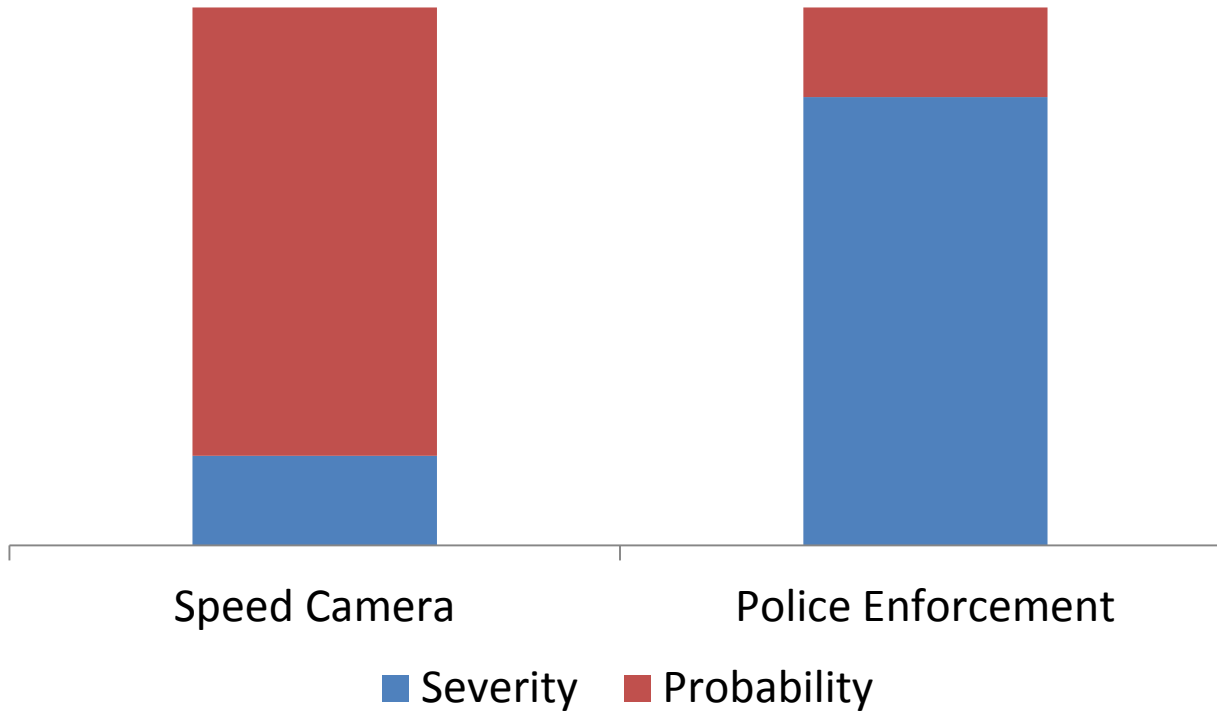
After: an average of the full years after installation)

	Before Period, Citywide	After Period, Citywide	Percent Change
CRASHES			
Total Crashes	7,980	7,361	-7.8%
Crashes w/ Injuries	1,833	1,556	-15.1%
INJURIES			
Motor Vehicle Occupant	1,914	1,665	-13.0%
Pedestrian	541	415	-23.3%
Cyclist	142	132	-7.0%
Total Injuries	2,597	2,213	-14.8%

REPEAT VIOLATORS



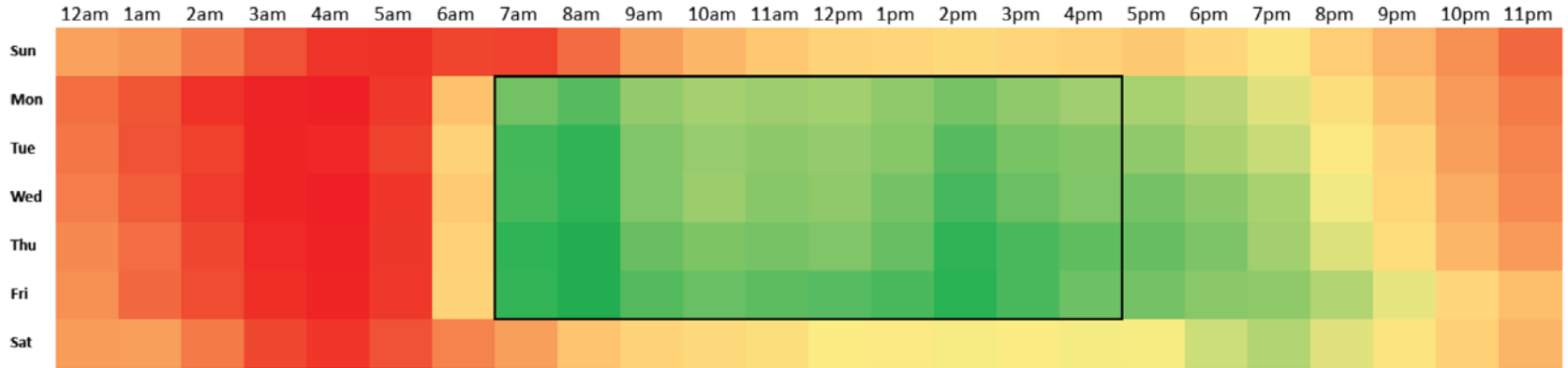
Deterrence



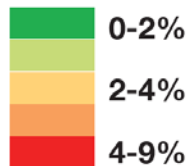


Juan Martinez
Director of Traffic Operations Policy
NYC DOT
jmartinez4@dot.nyc.gov

SPEEDING BY TIME OF DAY



Percent observed vehicles speeding
11 MPH and above by speed cameras.



— SCHOOL HOURS

Fewer than 1 in 10 speeding
deaths occurred on school
days during school hours.
