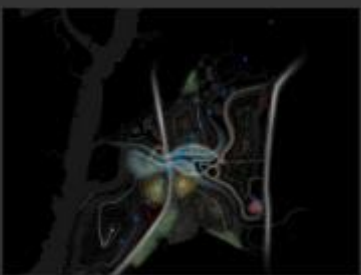
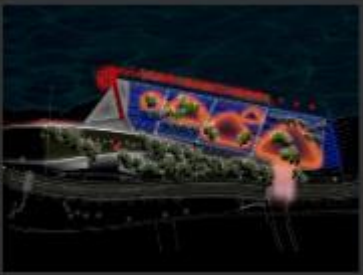
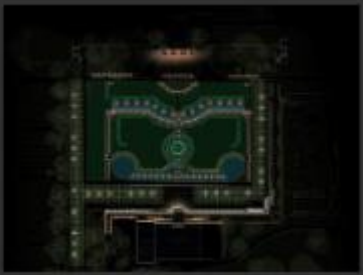


L' O B S E R V A T O I R E I N T E R N A T I O N A L

New York

WATT

Seattle



L'OBSEVATOIRE INTERNATIONAL





KEEP IT SIMPLE



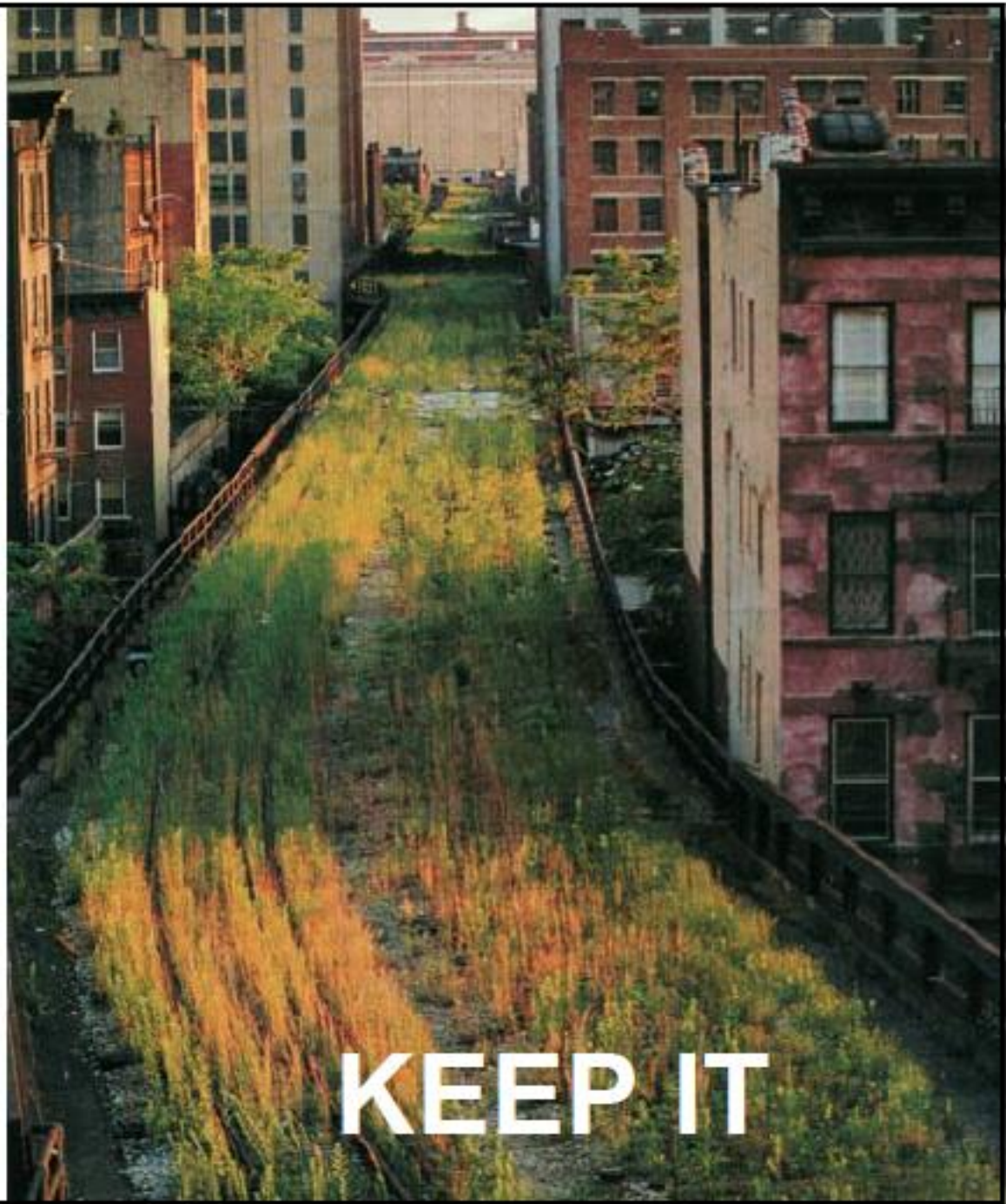
KEEP IT WILD



KEEP IT QUIET



KEEP IT SLOW



KEEP IT











THE METROPOLITAN MUSEUM OF ART
NEW YORK, NY



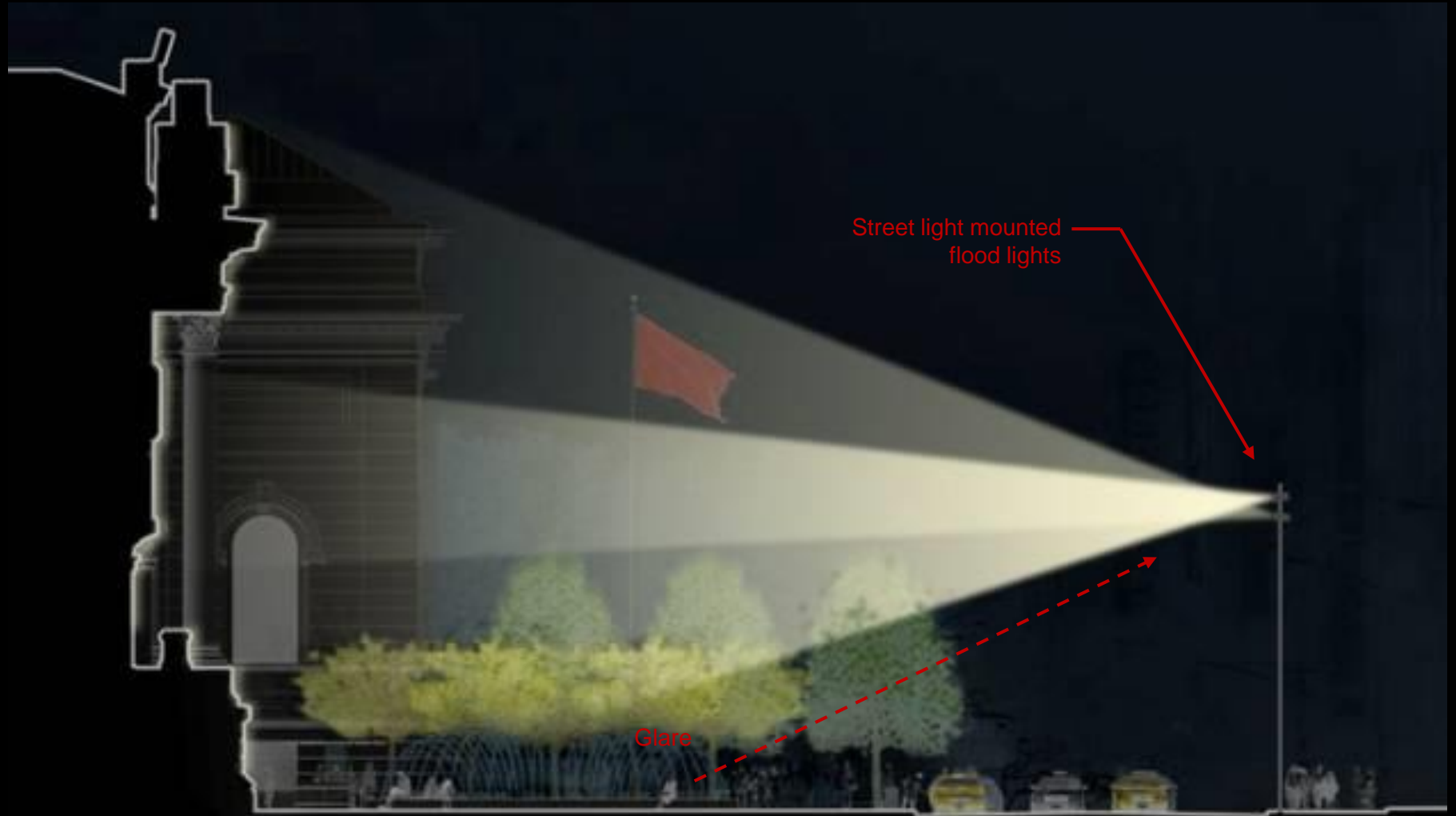
**FLOOD LIGHTING FROM A DISTANCE
(PREVIOUS CONDITIONS)**



**FLOOD LIGHTING FROM A DISTANCE
(PREVIOUS CONDITIONS)**



FLOOD LIGHTING FROM A DISTANCE (PREVIOUS CONDITIONS)





© OLIN / Sahar Coston-Hardy

L'Observatoire International







Why do we apply light at night?

Safety / Security

Utility

Wayfinding

Leisure

Beauty / Enjoyment / Civic Pride

Commerce

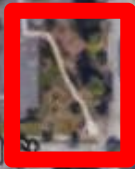
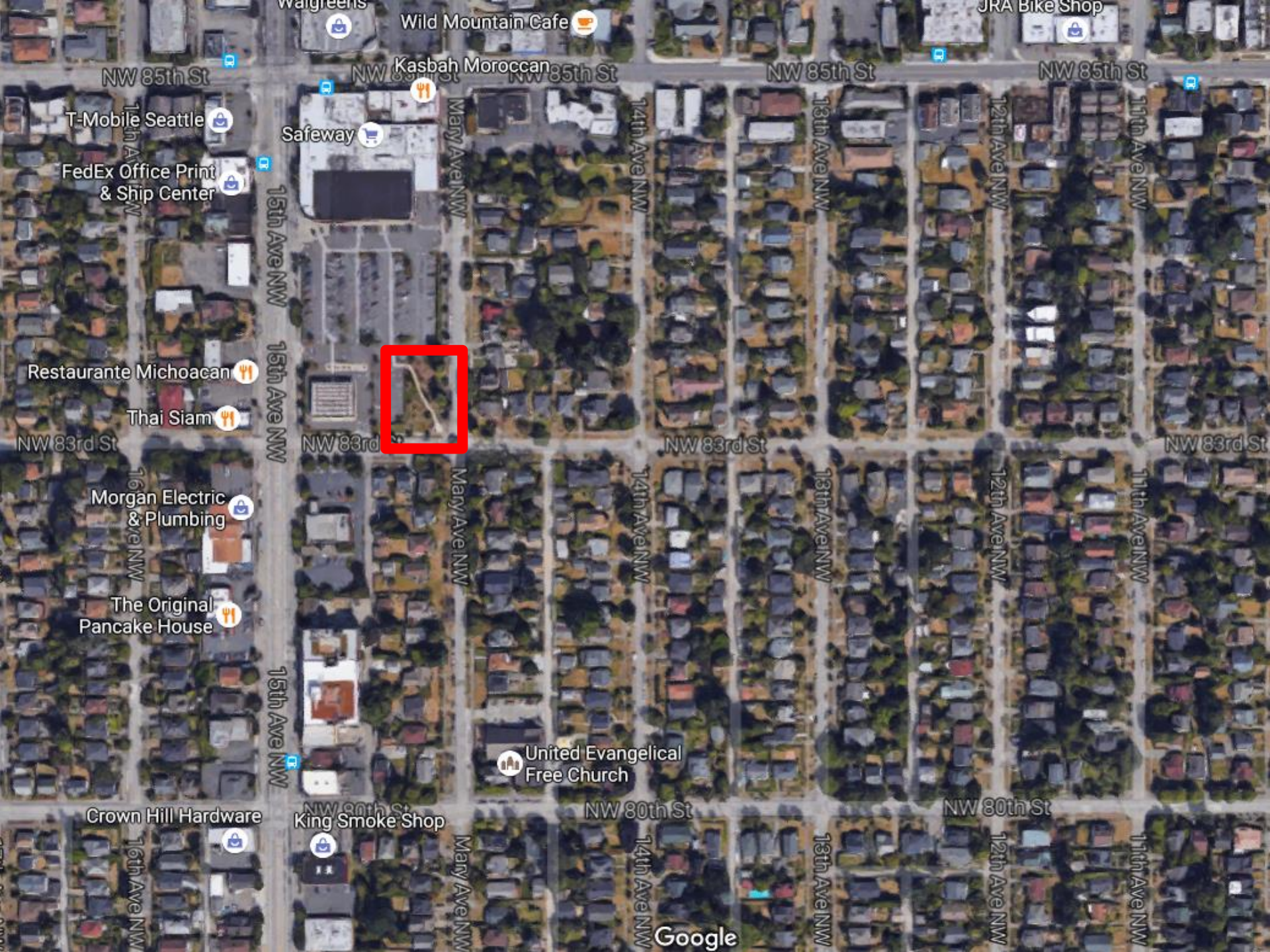
Primum non nocere

“First, do no harm”














A dark, monochromatic night landscape. In the upper left, a bright, circular light source, likely the moon, glows against the black sky, creating a subtle lens flare. The lower portion of the image shows a dark horizon line, possibly a beach or a field, with some faint, blurry light trails or reflections. The overall mood is quiet and contemplative.

thank you