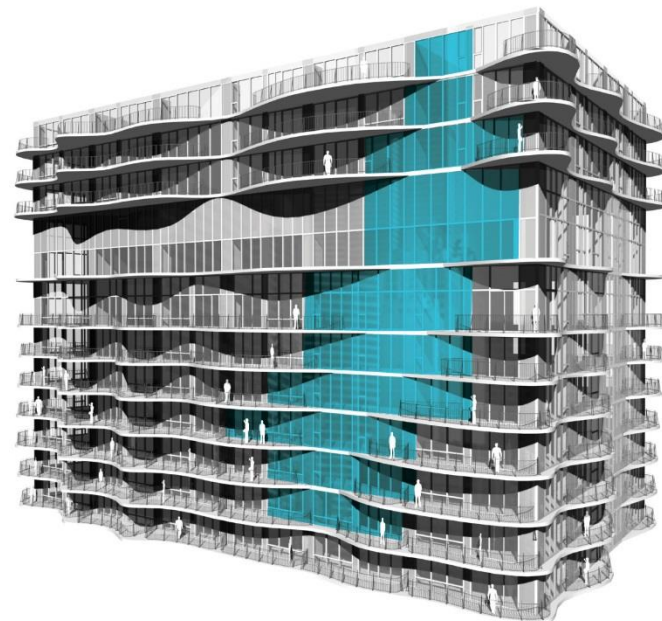
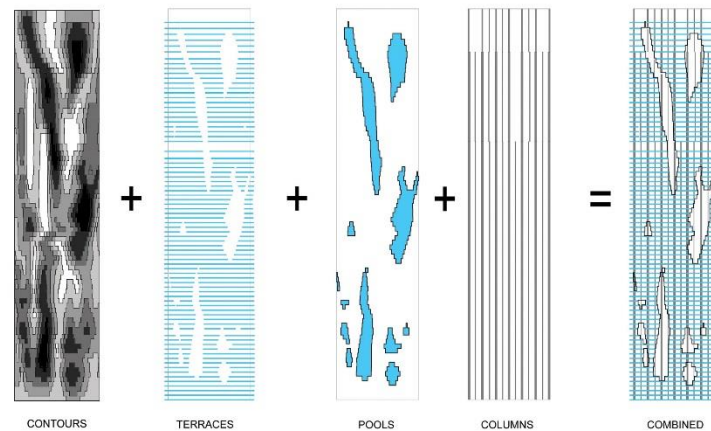


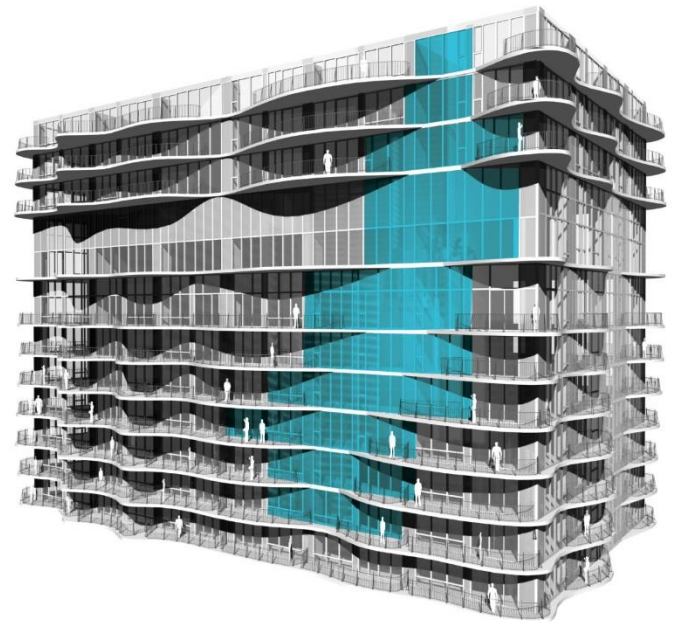


**STUDIO/
GANG
/ARCHITECTS**

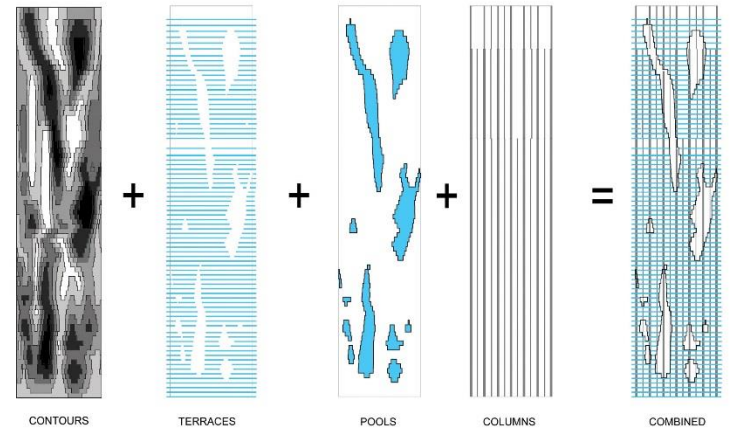


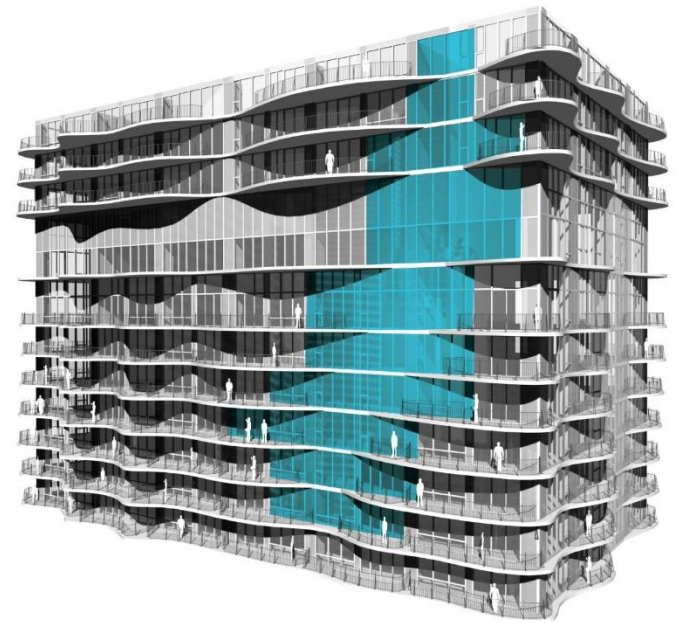
Independent parameters combine
to create Aqua's architecture.



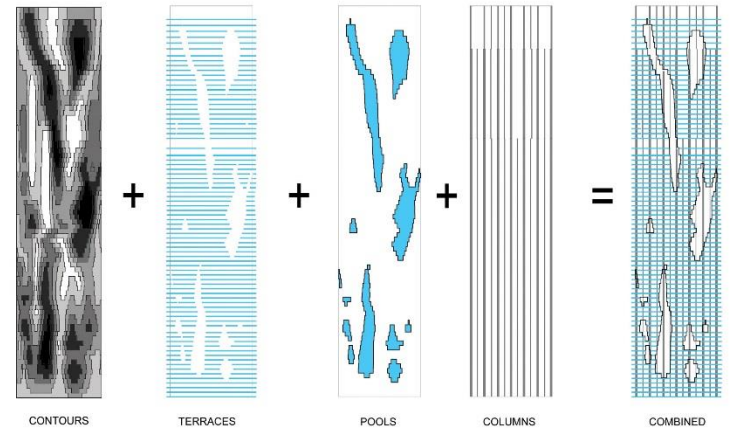


Independent parameters combine
to create Aqua's architecture.



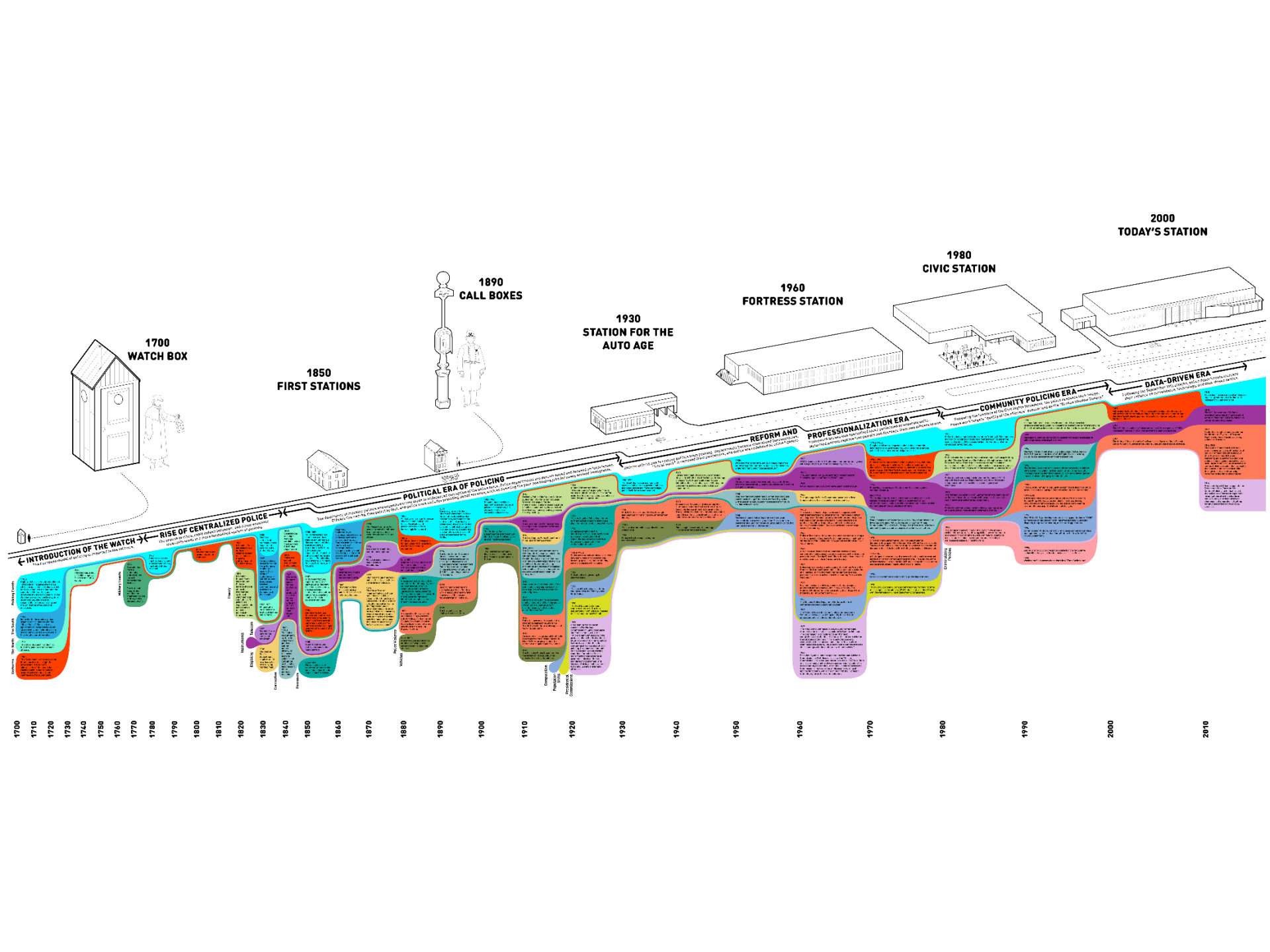


Independent parameters combine
to create Aqua's architecture.









TODAY

Looking at North Lawndale



Communities Served by the 10th District Police:

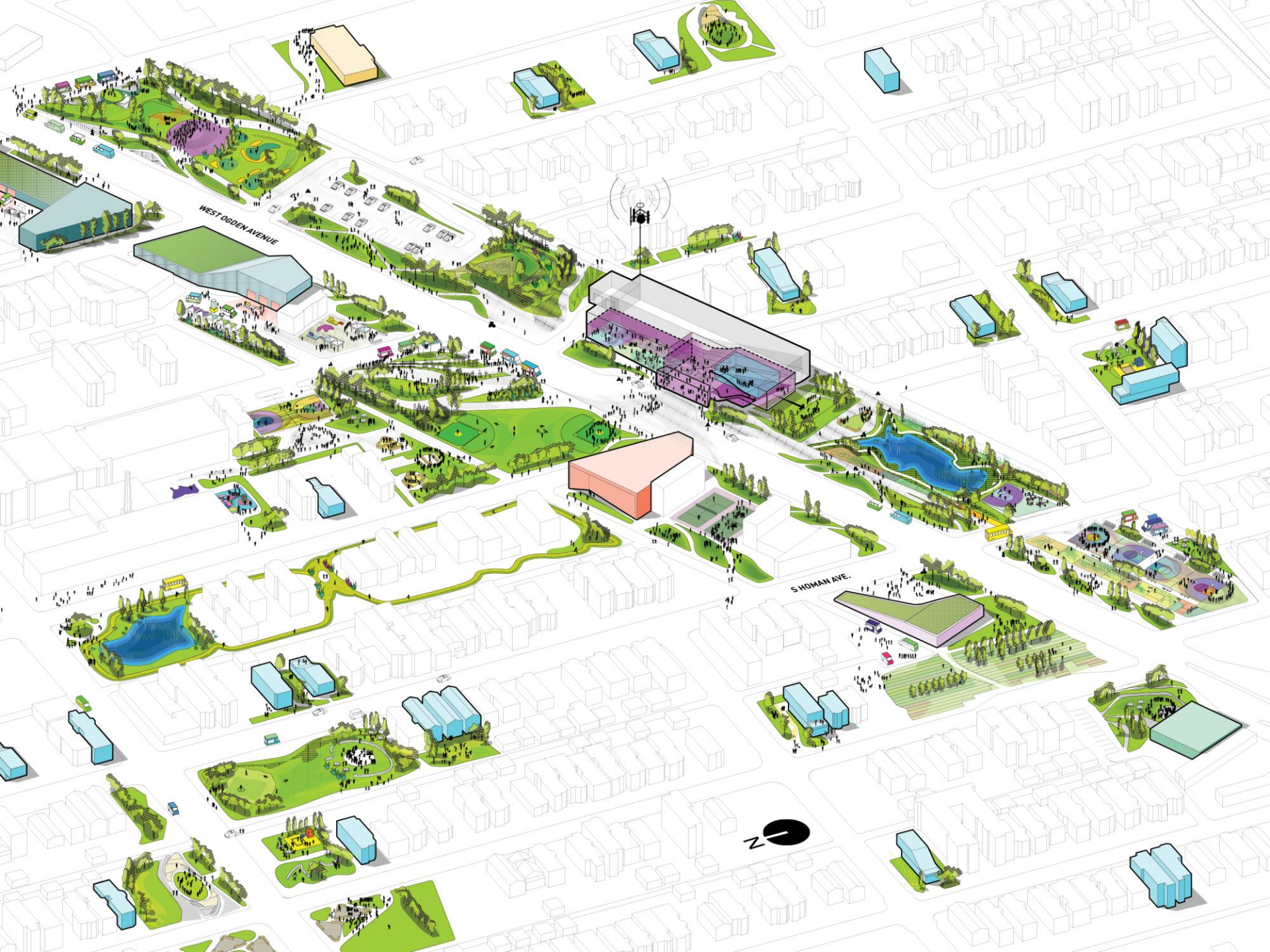
North Lawndale, Little Village, Lower West Side

Area of North Lawndale:

3.21 square miles

North Lawndale Population:

35,912





Civic Commons

Reimagining Our Cities' Public Assets

The Stakes

Health

Security

Education

Economy

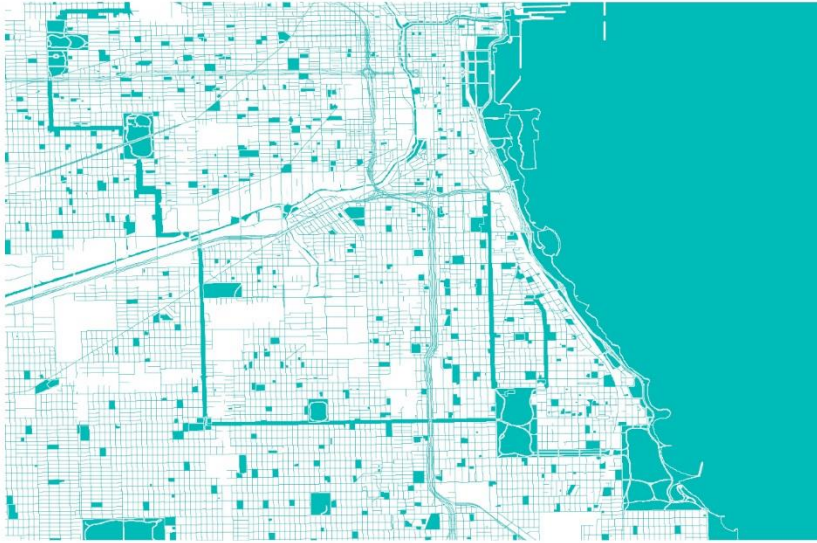
Environment

Infrastructure

Society

The Stakes The Possibilities

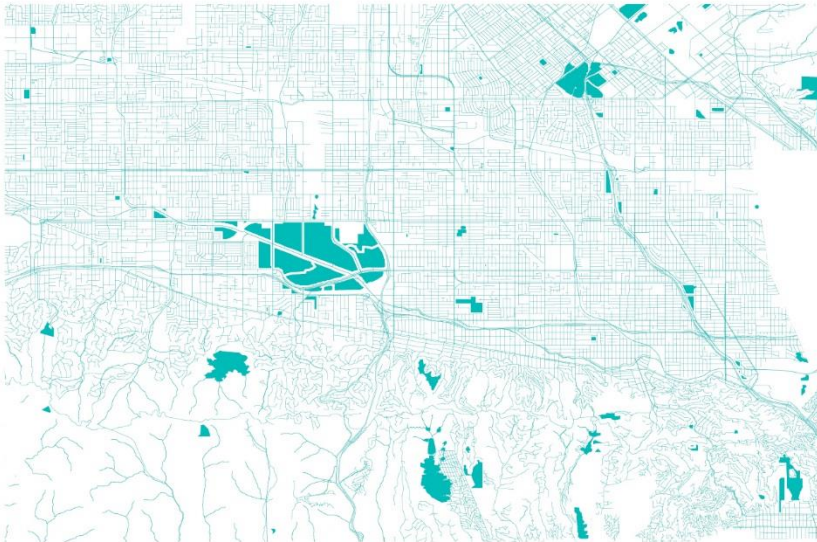
Health	Integrated Wellness
Security	Public Safety
Education	Equitable Opportunity
Economy	Inclusive Growth
Environment	Sustainable Practices
Infrastructure	Engaged Ownership
Society	Social Cohesion



Chicago



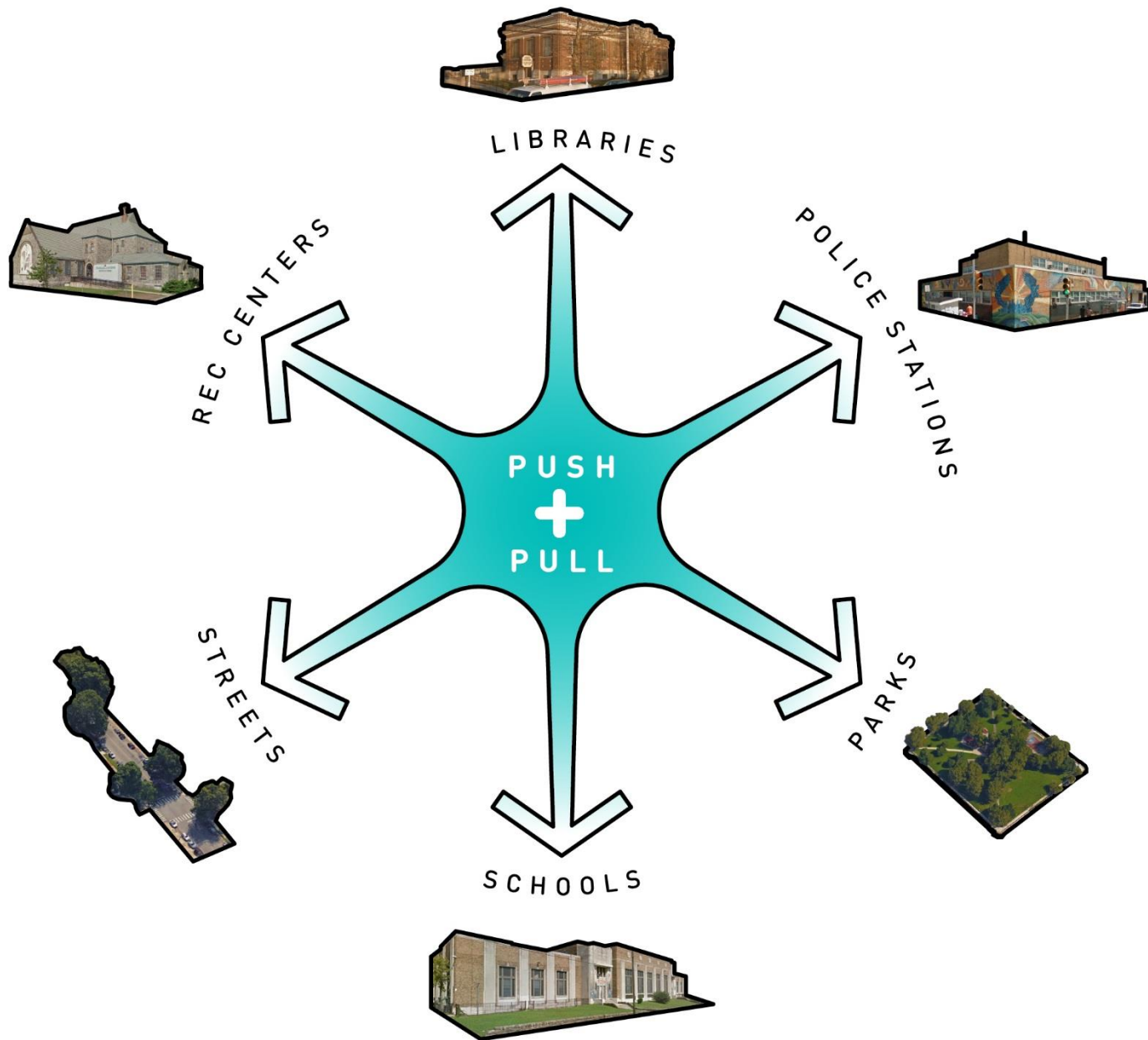
Memphis



Los Angeles



New York City

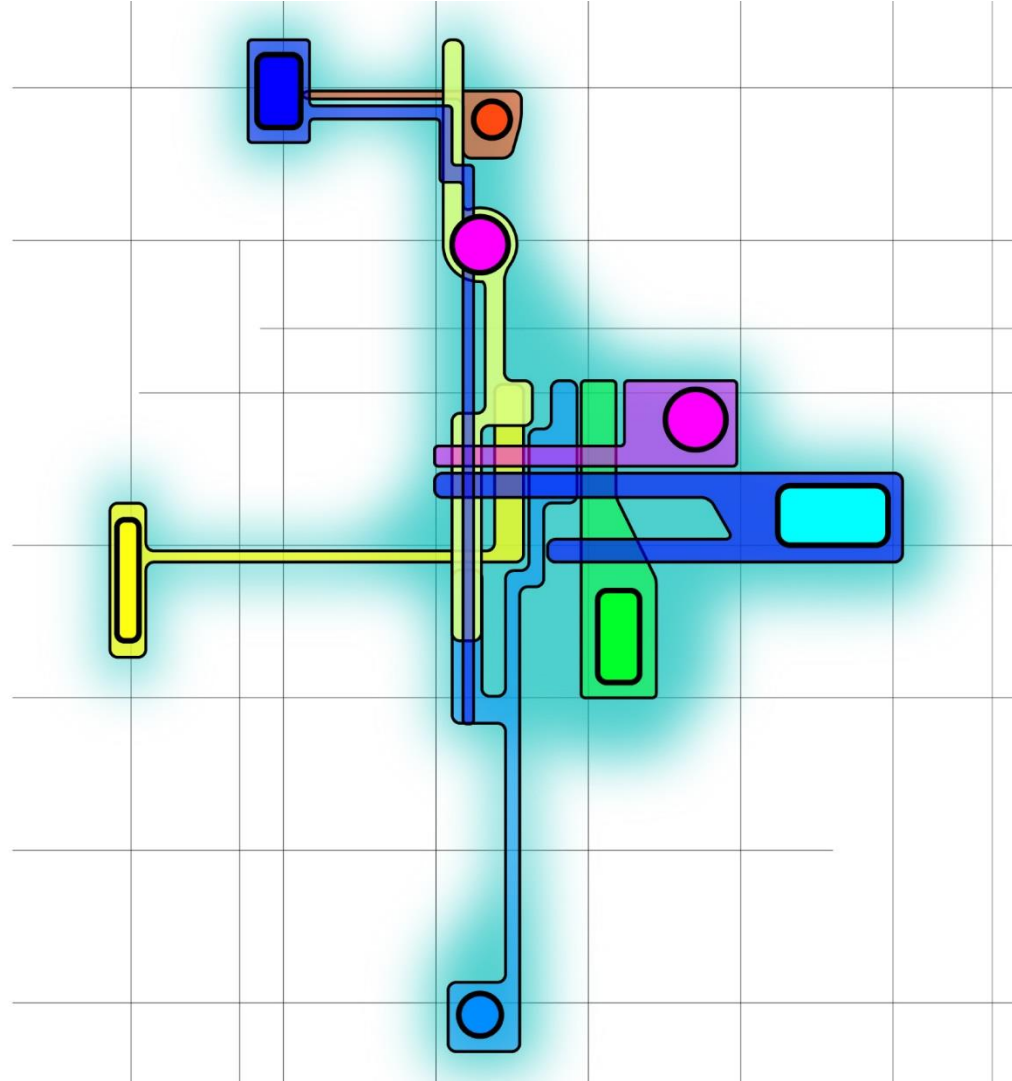


What You Can Do

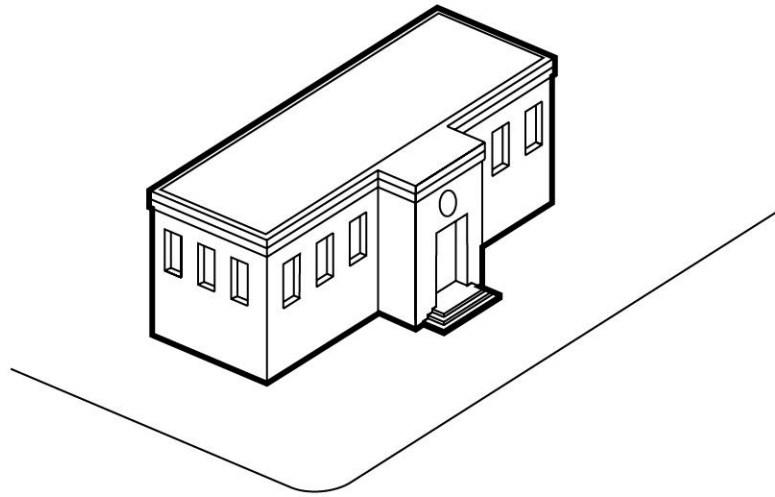
Reveal

Connect

Engage



Libraries



Open **Libraries** for **Opportunity**



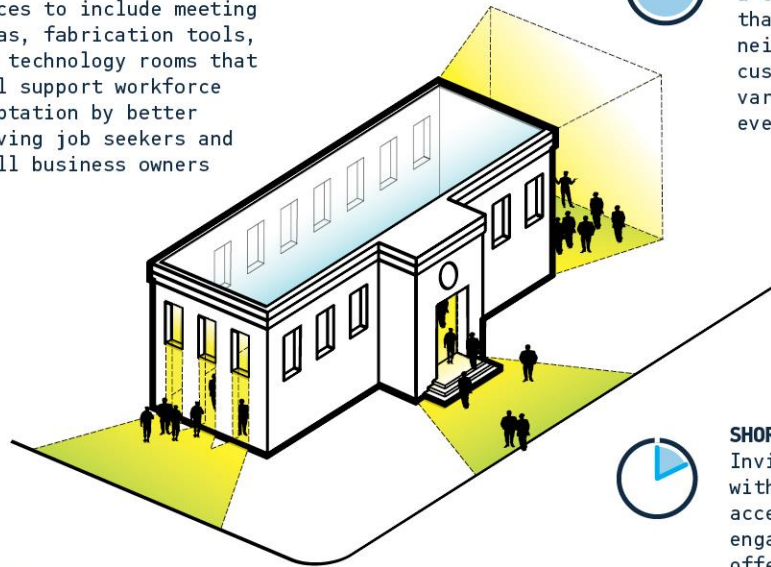
SHORT

Reconfigure interior spaces to include meeting areas, fabrication tools, and technology rooms that will support workforce adaptation by better serving job seekers and small business owners



LONG

Extend the library with a covered outdoor space that becomes a new neighborhood destination, customizable for a variety of programs and events



MEDIUM

Make activities happening on the inside more visible from the outside by opening the facade and reorienting the front door toward primary streets



SHORT

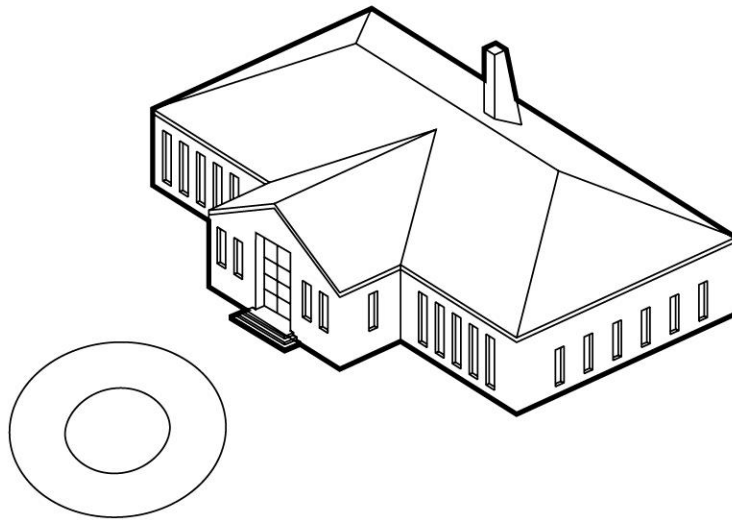
Invite the public inside with generous and accessible entrances that engage the street and offer welcoming places to gather



An architectural rendering of a modern community center. The building features a brick base and a large glass extension on the left side. The glass extension has the words "OPEN EXCHANGE" written on its upper portion. A large crowd of diverse people is gathered in front of the building, engaged in various activities. Some are sitting on low white concrete walls, while others are standing and talking. A man in the foreground is playing a double bass. The scene is set outdoors with trees and a paved plaza. The entire image has a blue tint.

Local branches lift communities

Recreation Centers



Move **Recreation Centers** Toward **Wellness**



LONG

Make room for holistic healthcare by adding new, leasable space



MEDIUM

Remove barriers to participation and supervision by combining closed, single-purpose rooms into larger open spaces



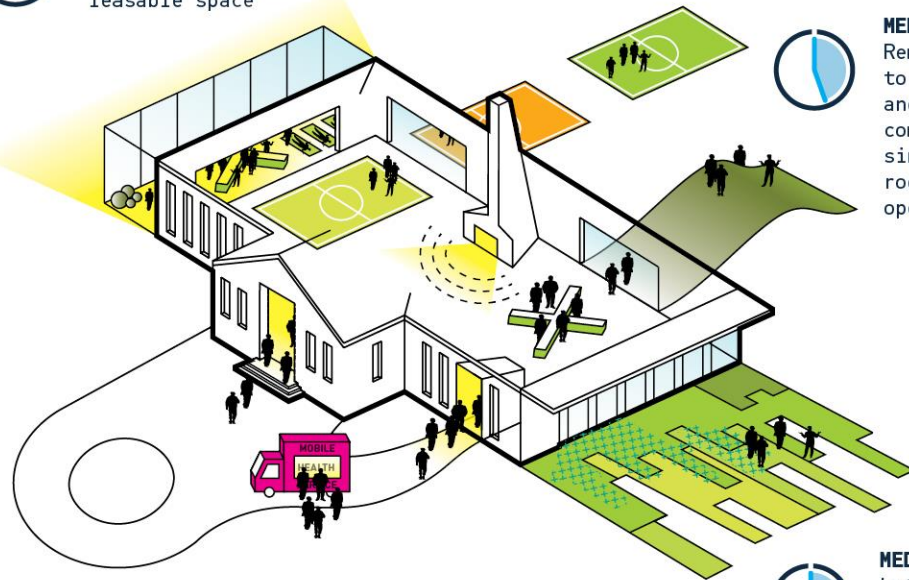
MEDIUM

Let in light and air by connecting indoor areas with outdoor gathering and activity spaces



SHORT

Activate entrances and sidewalks by making space for mobile services and amenities like **health trucks**, food trucks, and library bookmobiles



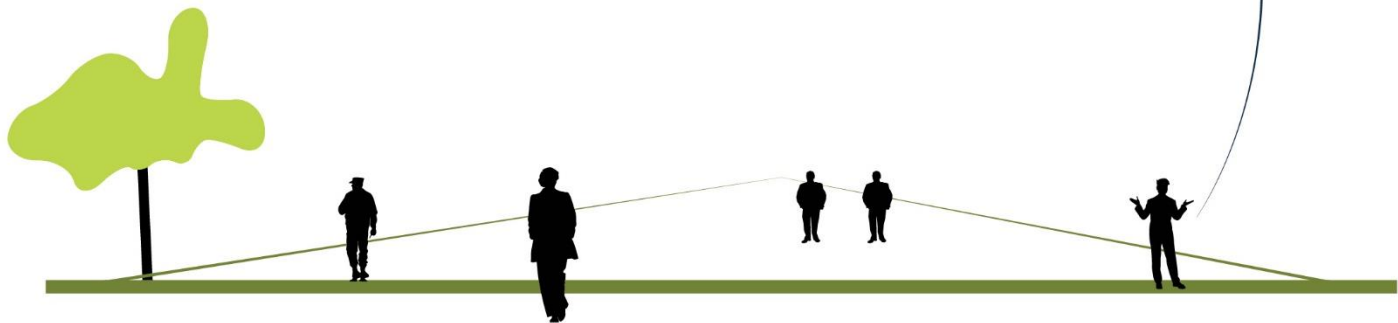




Better access improves health

Parks

Where's the park?



Shape Parks into Experiences



SHORT

Create more diverse landscapes, welcoming areas to gather, and collaborative programming to attract more people and wildlife

Let's play hide and seek!



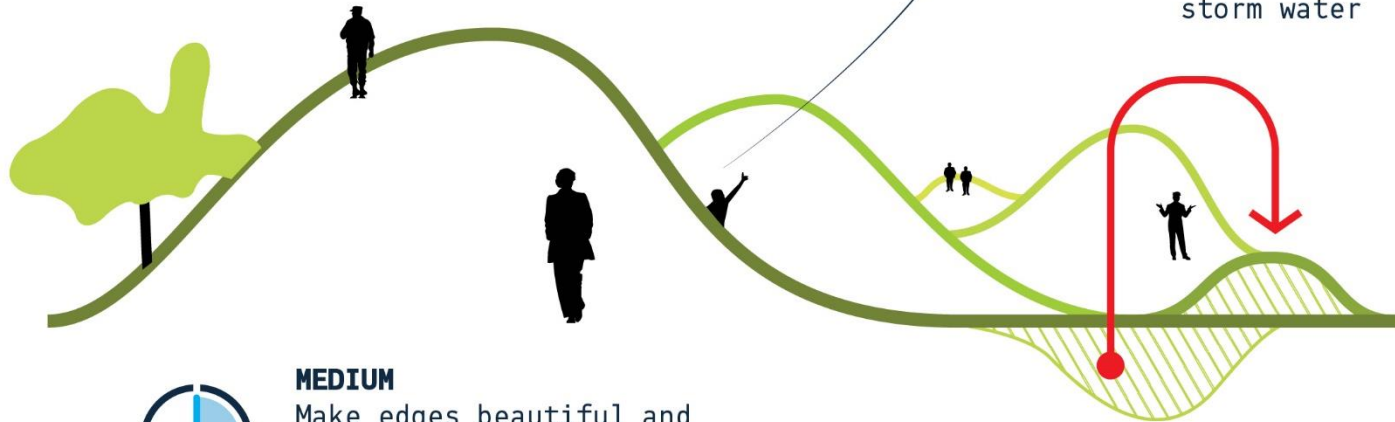
LONG

Cut and fill to add texture and topography that multiplies experiences and manages storm water



MEDIUM

Make edges beautiful and bold with art, furniture, and greenery that continues into the street to highlight parks' presence and extend their inviting reach

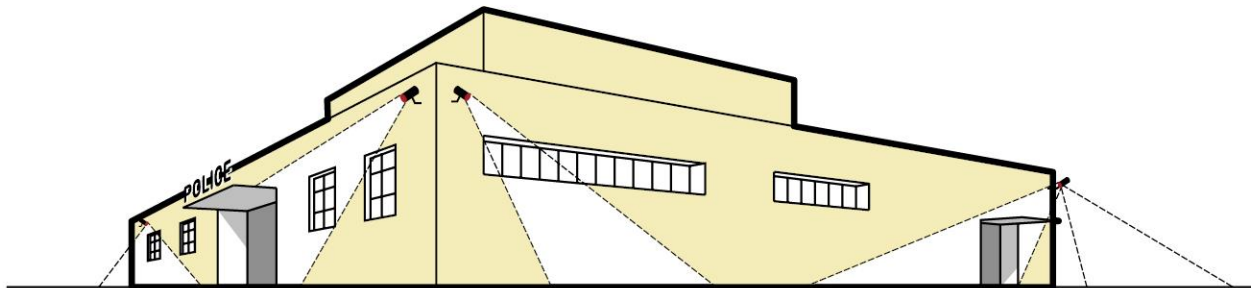




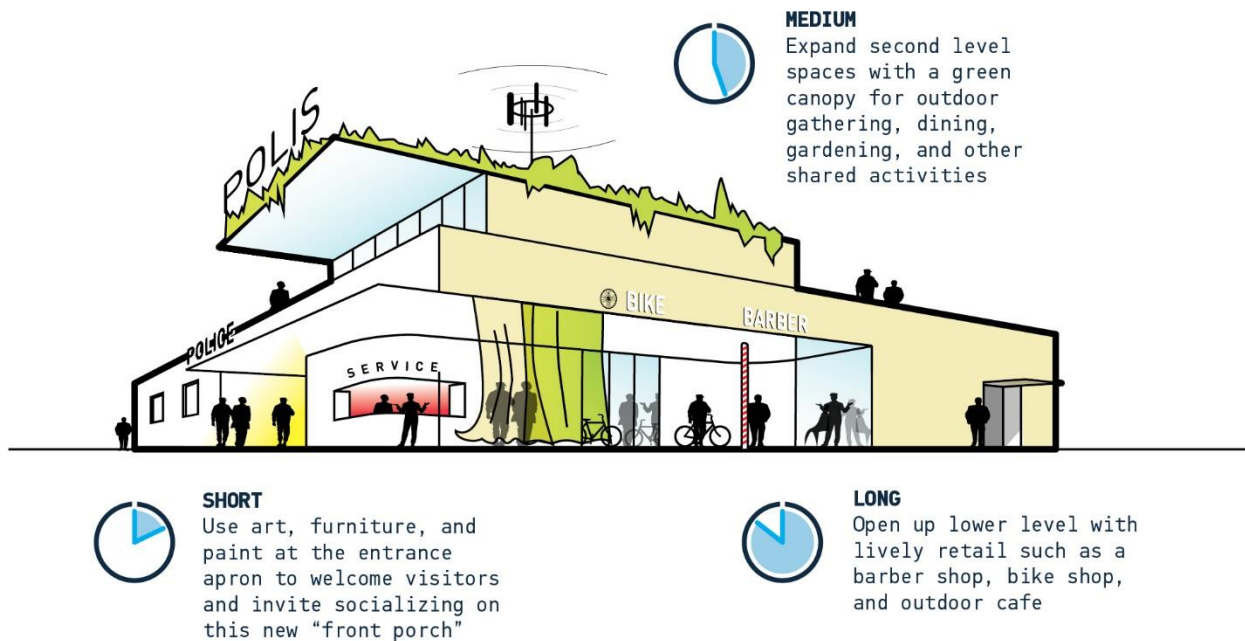
A blue-tinted illustration of a vibrant park scene. In the foreground, a child is seen from behind, looking towards a grassy area. A path winds through the park, where several people are walking and playing. A large, leafy tree stands prominently on the right. In the background, a kite is flying in the sky, and a modern building is visible on the left. The overall atmosphere is peaceful and community-oriented.

Small parks sustain neighborhoods

Police Stations



Center **Police Stations** on **Community**

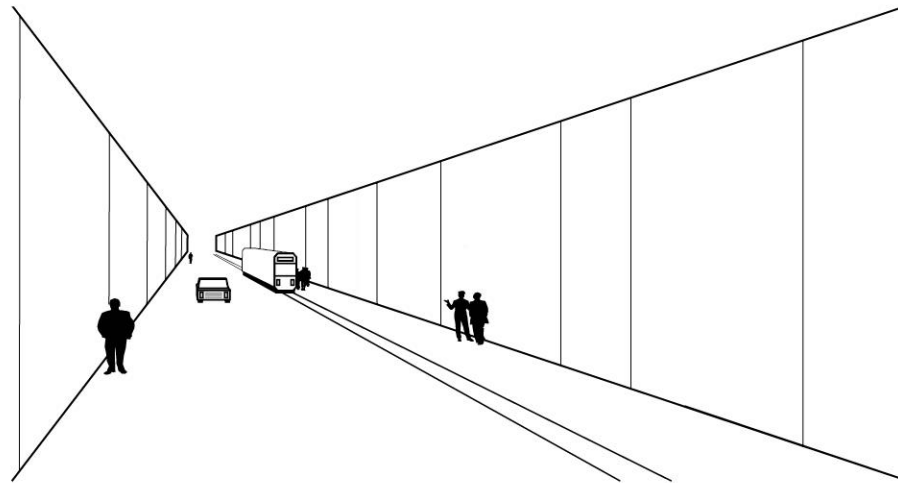




Everyday encounters build trust



Streets



Make **Streets** into **Places**



LONG

Add a roof canopy to provide shade and shelter that encourage an active street life



SHORT

Develop and support events held along or on streets, linked with storefront shops, to stimulate commerce and provide more opportunities for neighbors to socialize



MEDIUM

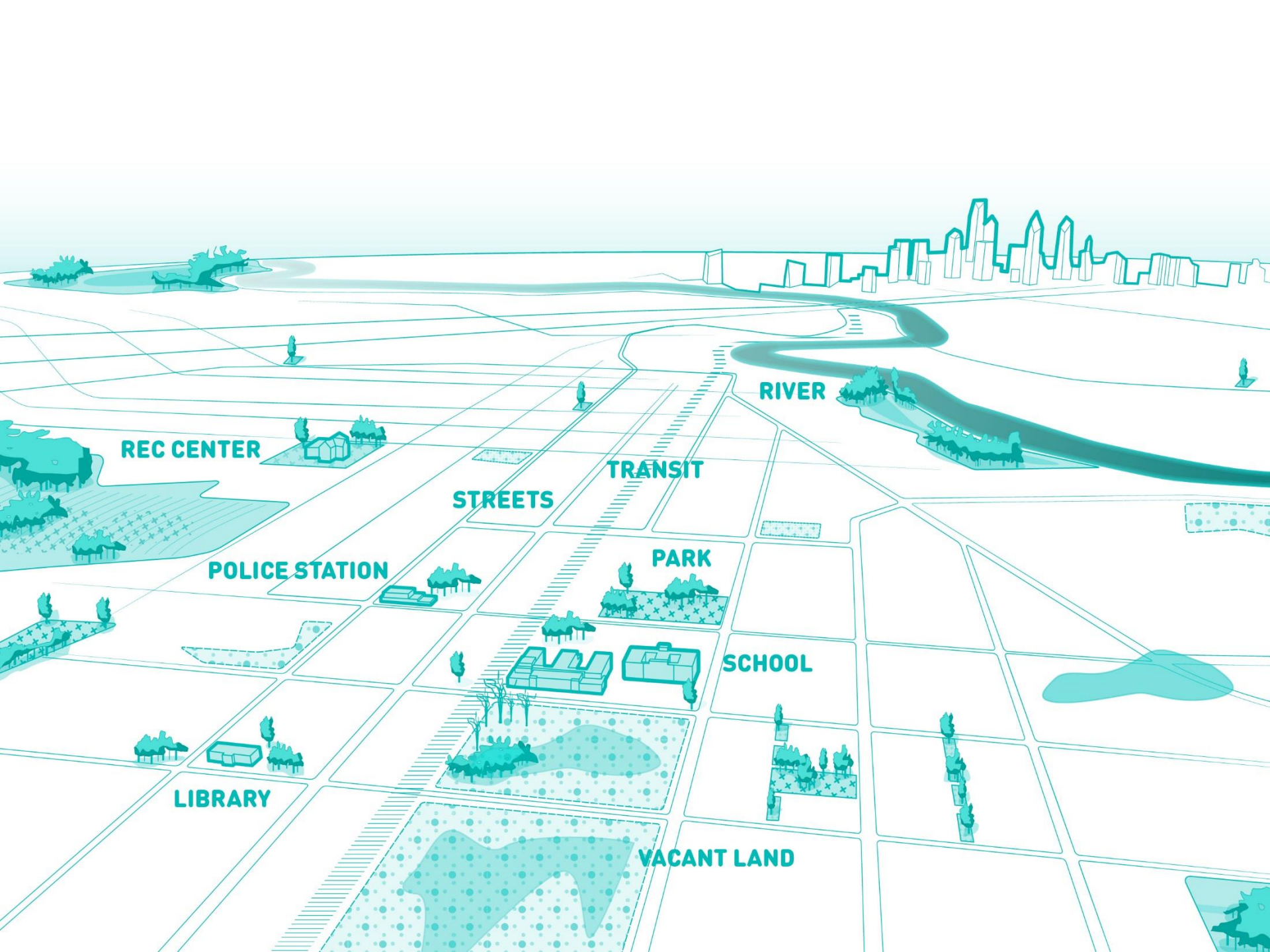
Alter the design and surface of the street to promote storm water management and various modes of transit





Great streets are a good bet





REC CENTER

POLICE STATION

LIBRARY

STREETS

TRANSIT

PARK

SCHOOL

RIVER

VACANT LAND

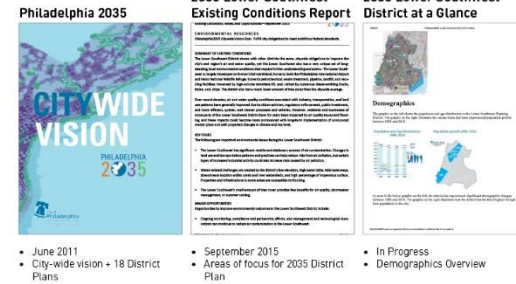
Southwest CDC Initiatives



Land Use and Zoning



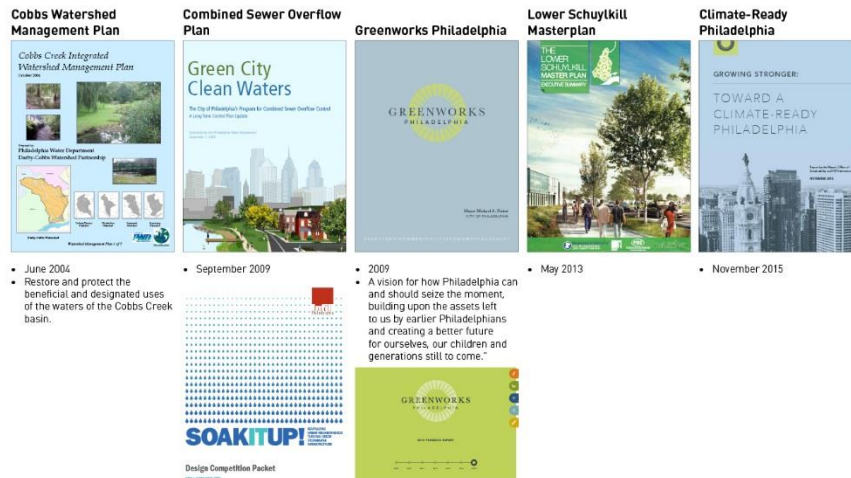
Philadelphia 2035 Comprehensive Plan



Transit and Trails



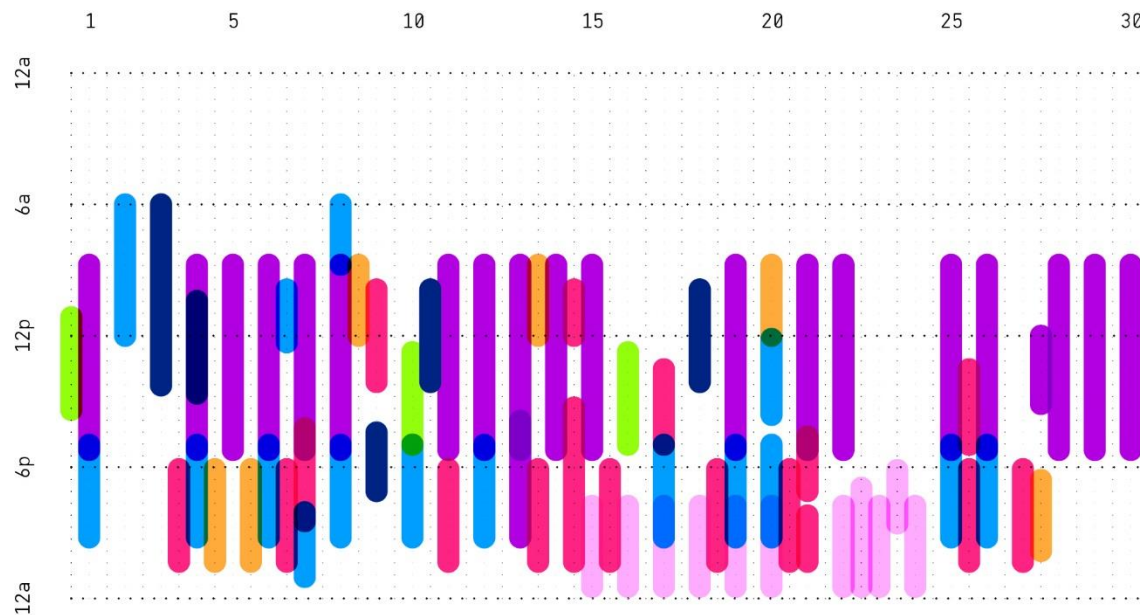
Water and Ecology



Employment
Fitness
Faith-based
Educational
Health
Civic
Arts & Cultural



APRIL





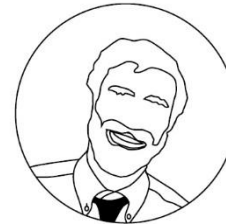
Donna Henry
Executive Director
Southwest Community Development
Corporation



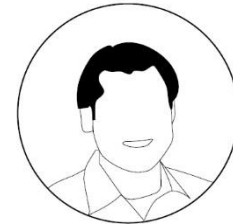
Siobhan Reardon
President and Director
Free Library Philadelphia



Nancy Goldenberg
Vice President, Planning & Development;
Executive Director
Center City District and Foundation



Walter Licht
Professor of History
University of Pennsylvania



Glen J. Abrams
Director of Sustainable Communities
Pennsylvania Horticultural Society



Brian Abernathy
Managing Director
City of Philadelphia



Mark Harrell
Community Organizer
Southwest CDC



Patricia Smith
Senior Policy Advisor
Reinvestment Fund



Julianne Schrader Ortega
Chief of Programs
Pennsylvania Horticultural Society



Howard Neukrug
Former Commissioner
Philadelphia Water Department



Andrew Frishkoff
Executive Director
Philadelphia LISC



Julie Wertheimer
Chief of Staff - Criminal Justice
City of Philadelphia



Christine Knapp
Director of the Office of Sustainability
City of Philadelphia

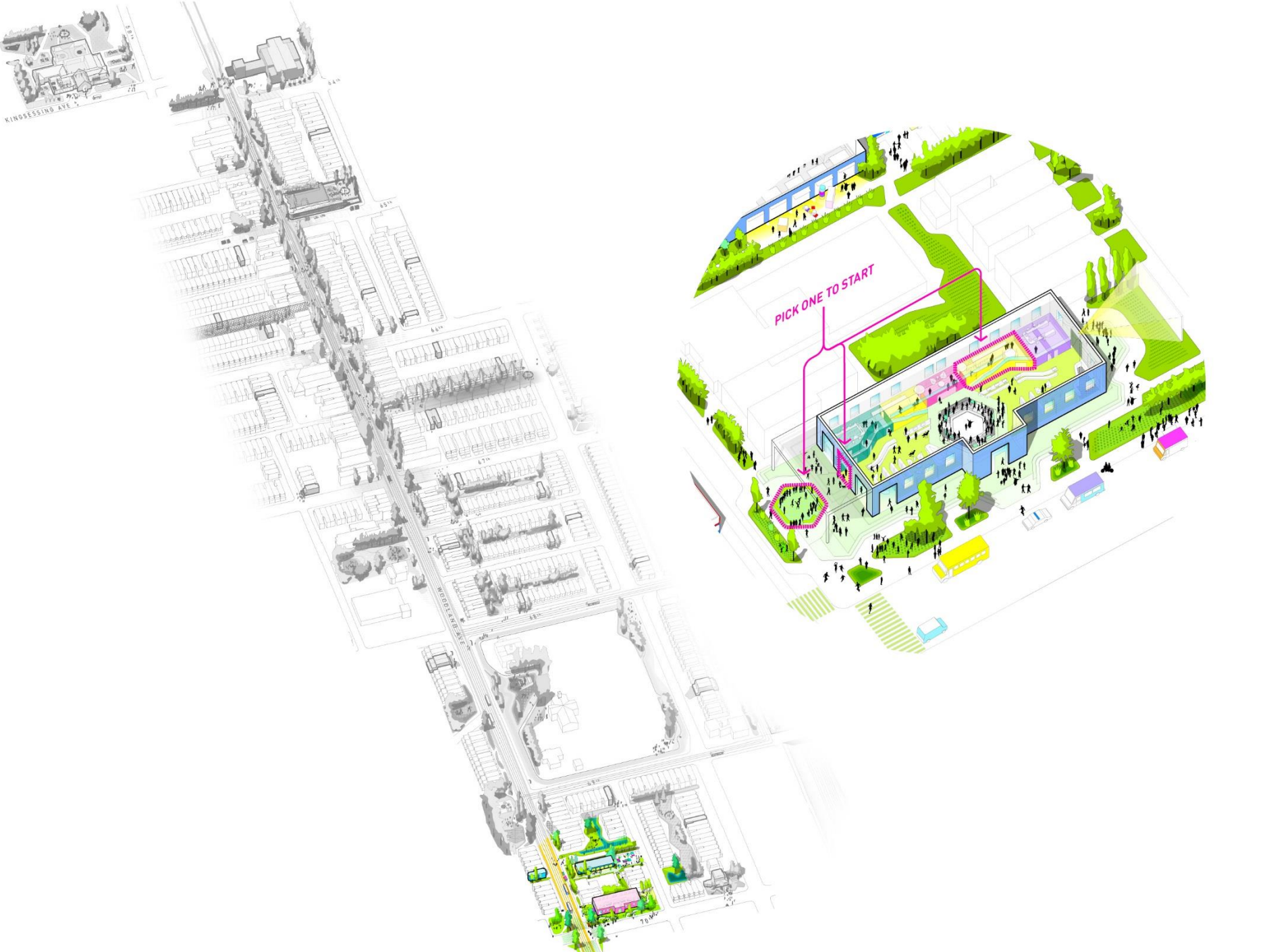


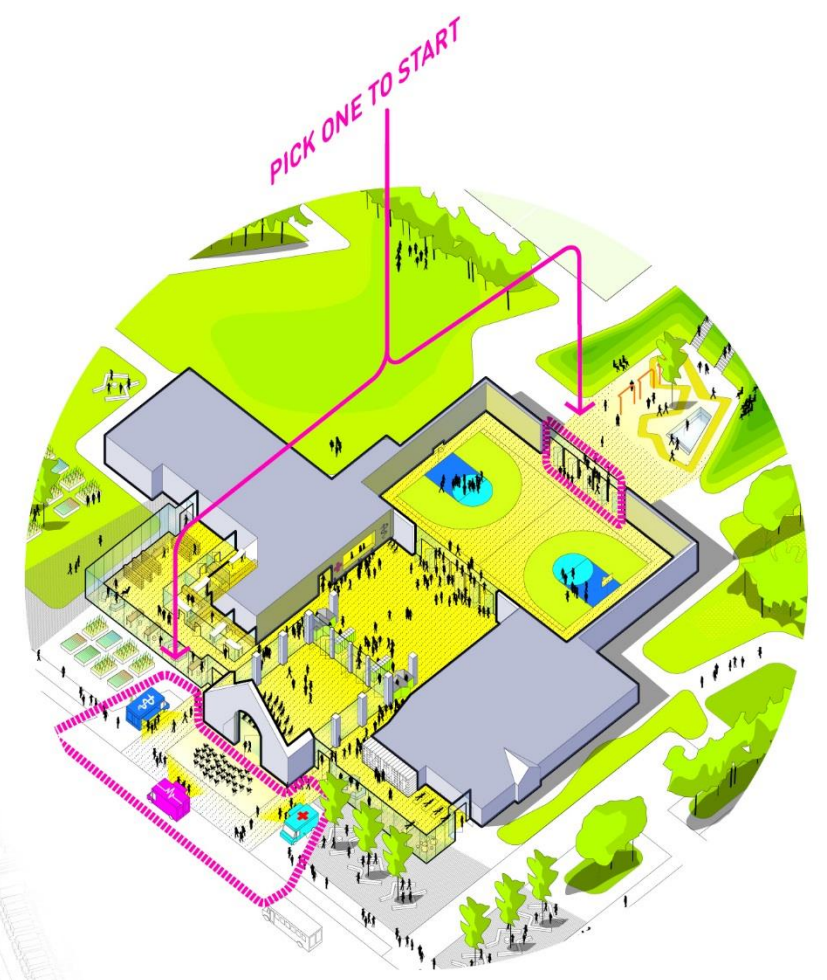
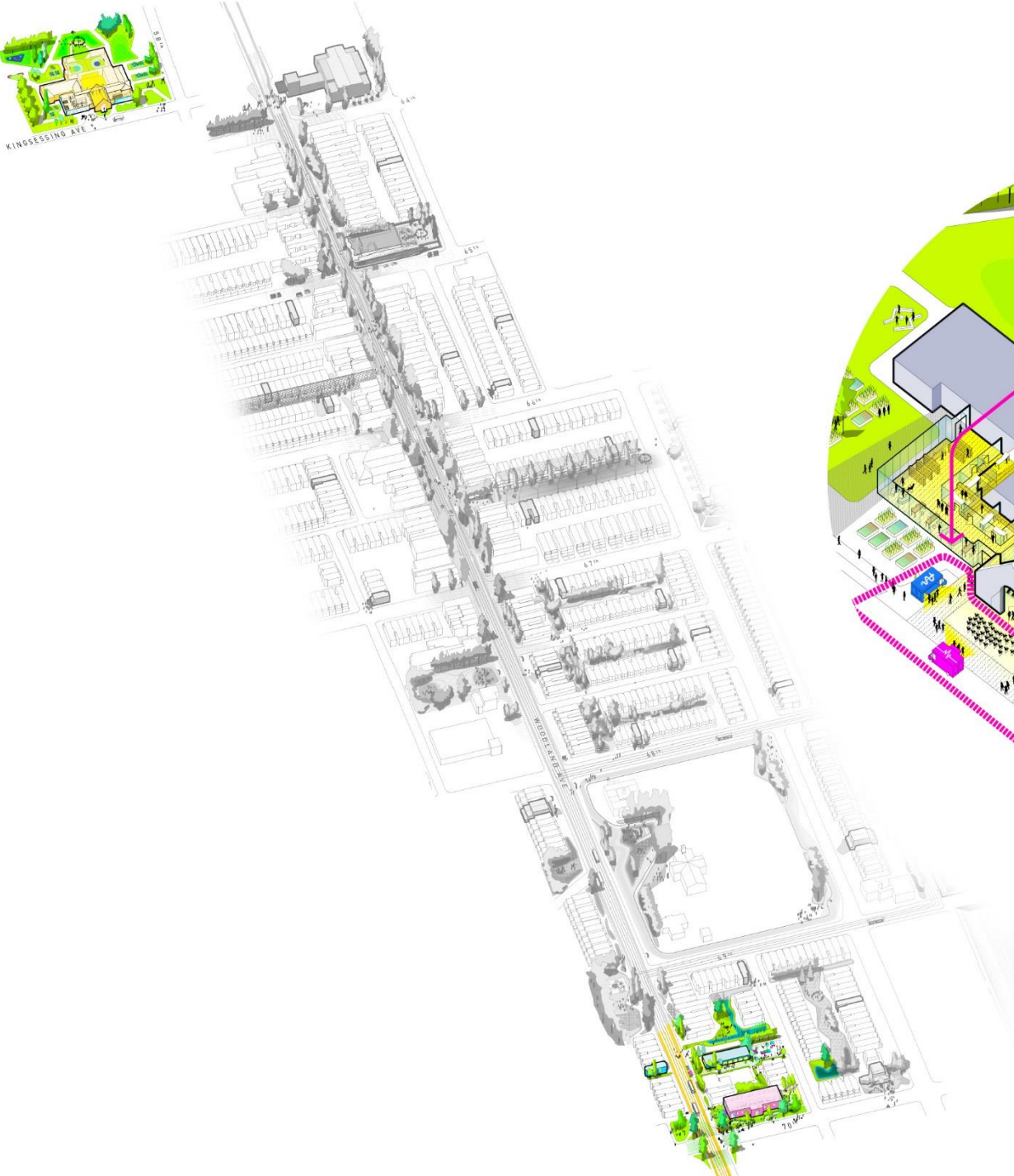
Kathryn Ott Lovell
Commissioner of Parks and Recreation
City of Philadelphia

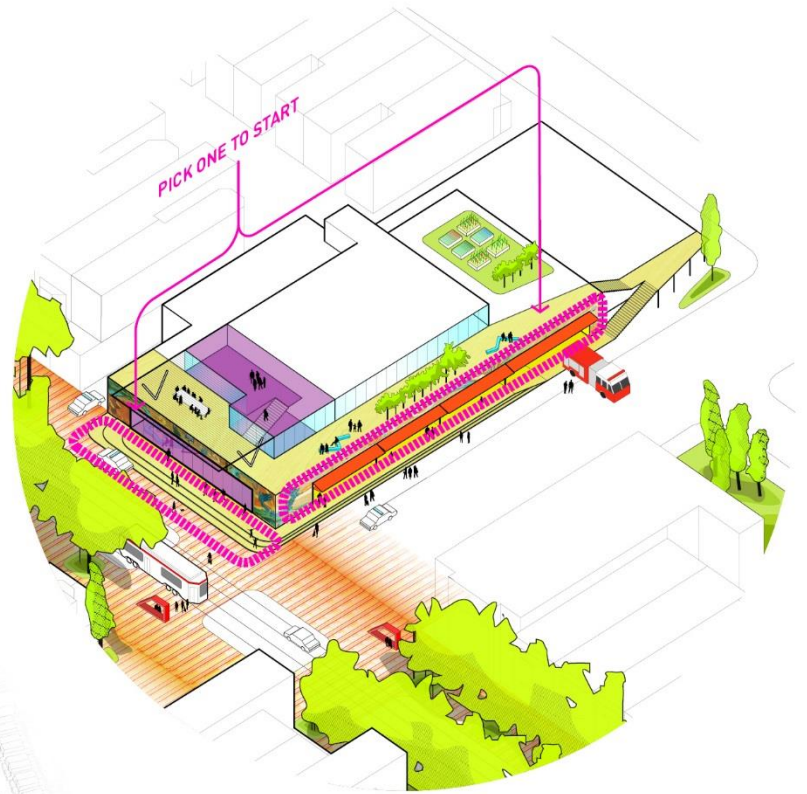


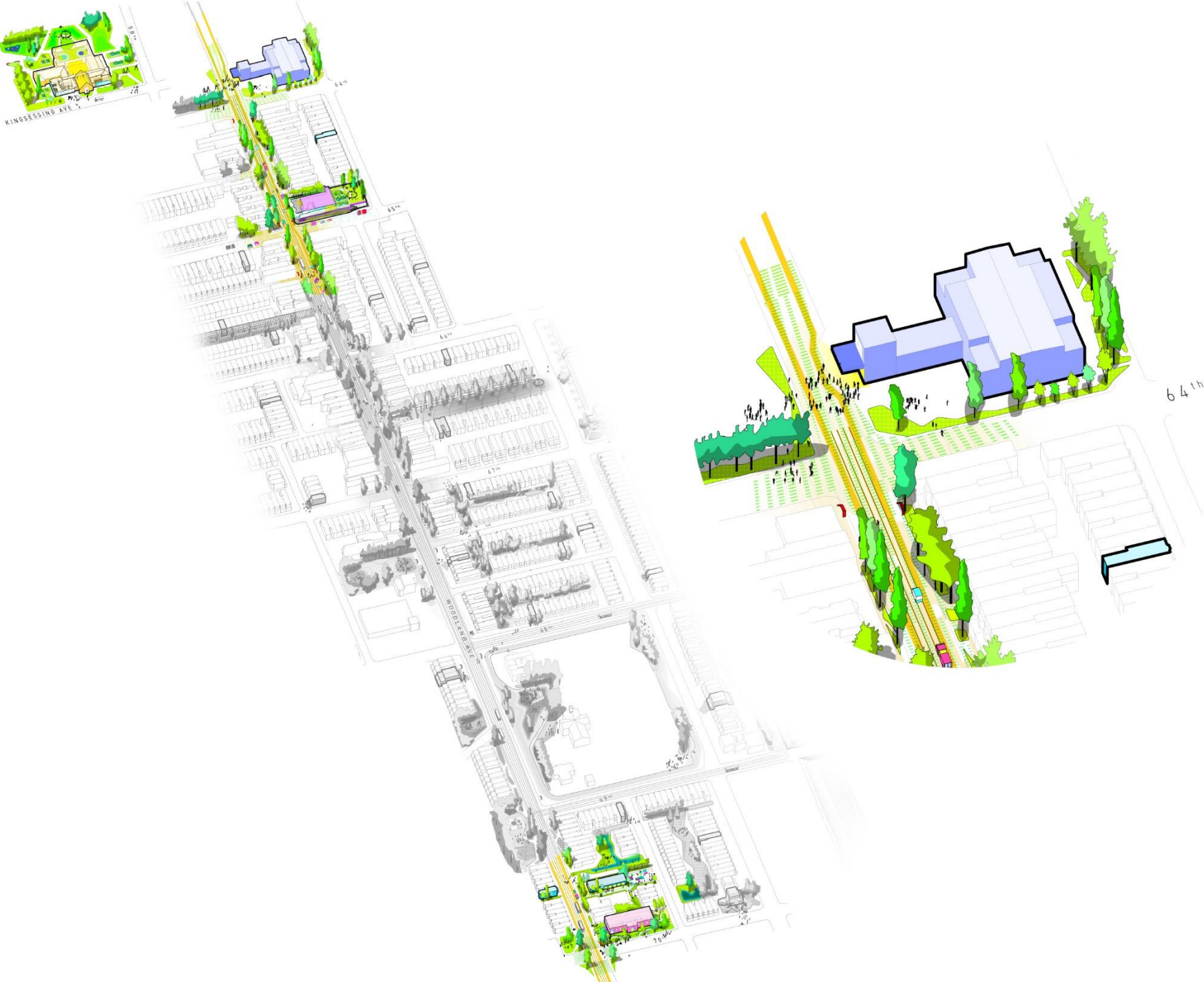
Karen Fegely
Deputy Director Commerce Department
City of Philadelphia

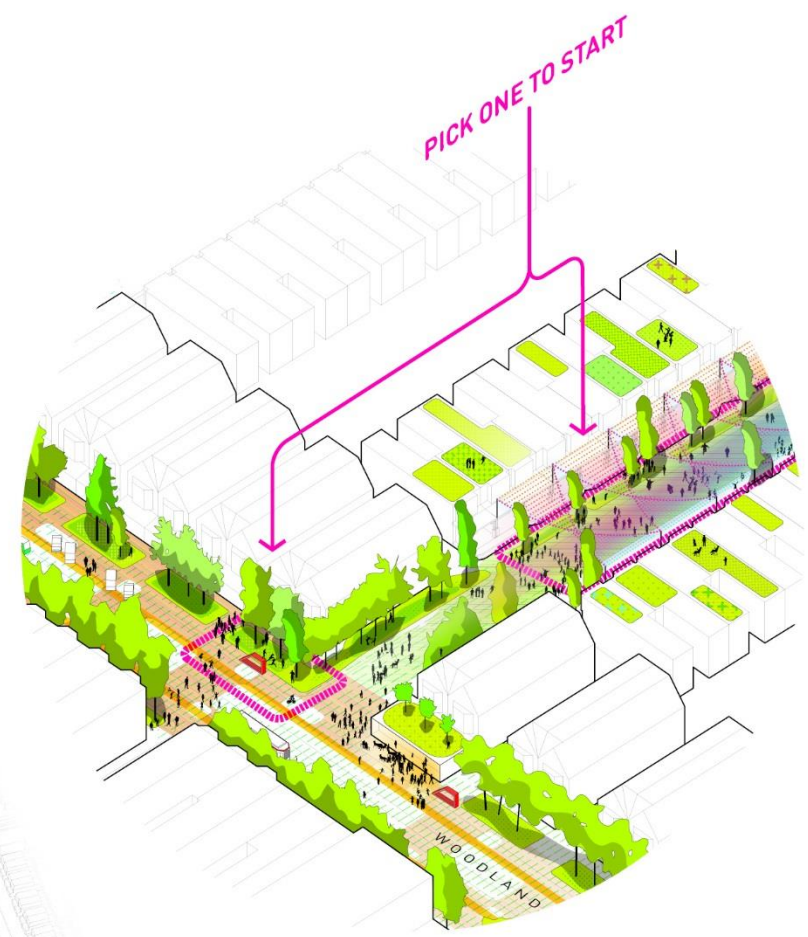


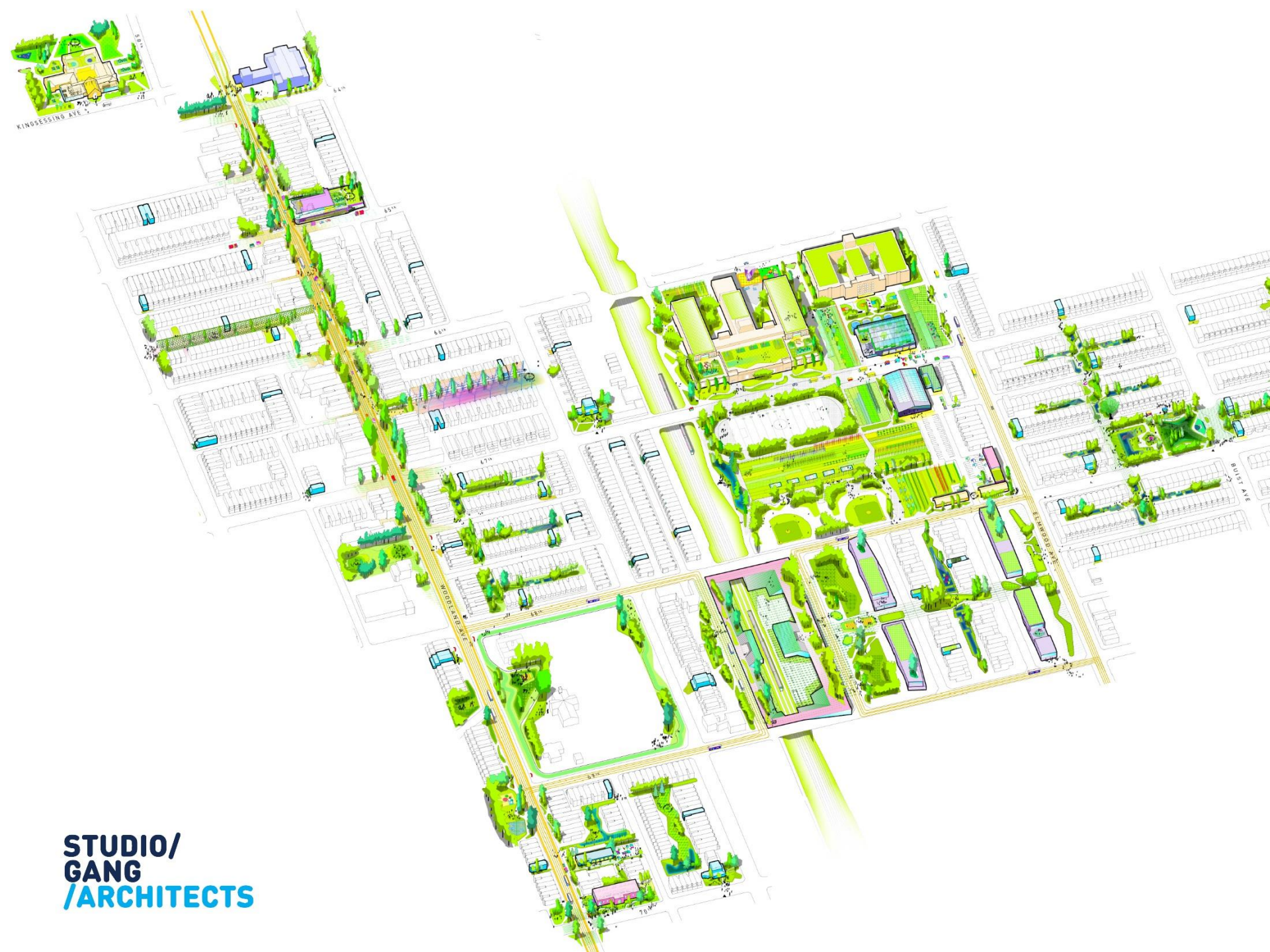












**STUDIO/
GANG
/ARCHITECTS**

