



GREENbike

SLC'S NON-PROFIT BIKE SHARE



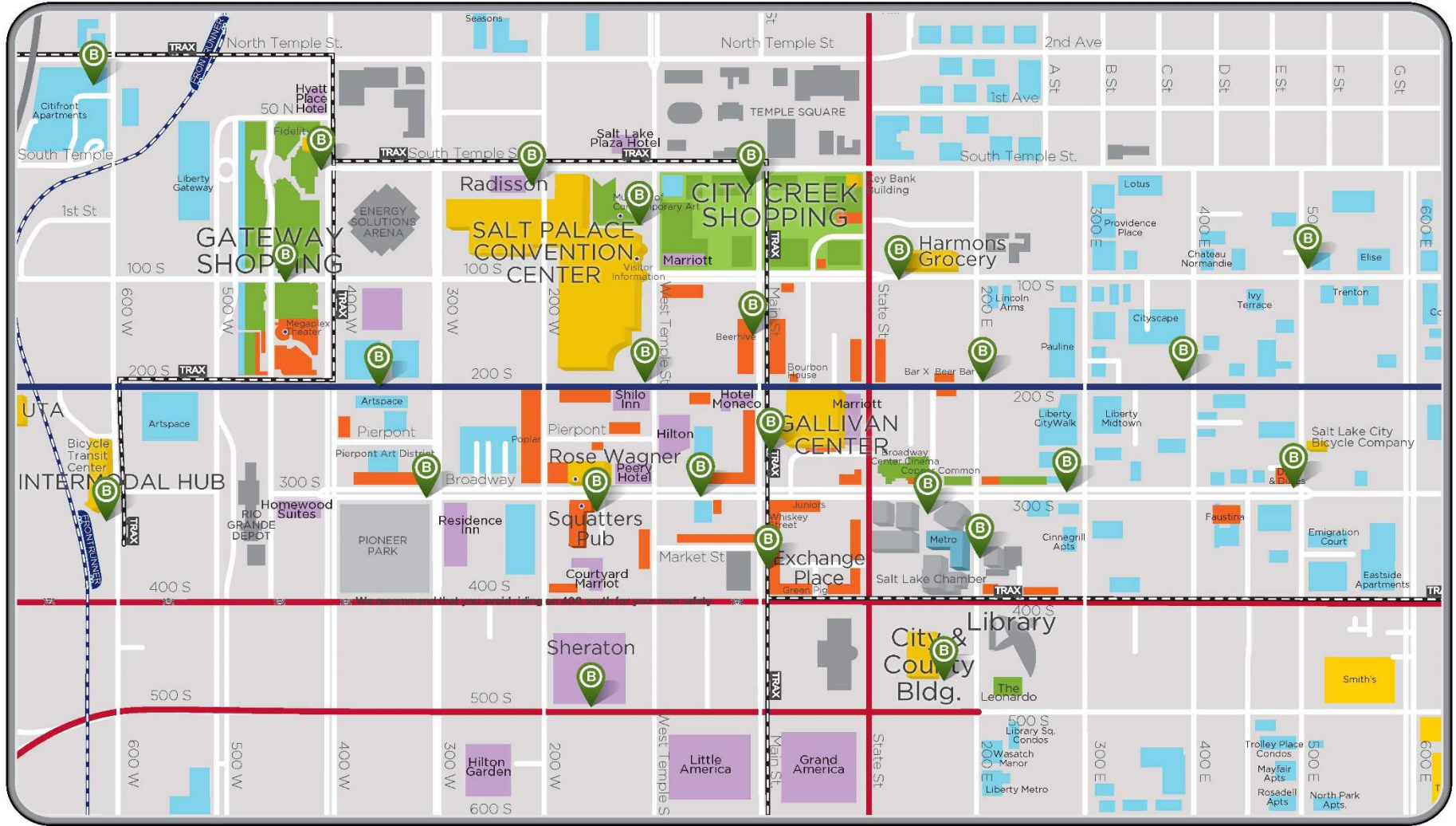
Sponsors and Strategic Partners



Different by Nature.



BIKE SHARE STATION MAP





GREENbike

SLC'S NON-PROFIT BIKE SHARE

\$5 = UNLIMITED 30-MIN RIDES FOR 24 HOURS

\$75 = UNLIMITED 1 HOUR RIDES FOR 1-YEAR

RETURN BIKE TO ANY STATION.

RETURN A BIKE & YOUR TIME RESETS.

**WANT TO RIDE LONGER THAN 30-MIN AT A TIME? NO PROBLEM.
\$3 PER HOUR AFTER THE FIRST 30 MINUTES OF YOUR TRIP.**

Questions? Problem? 801-333-1110 or [Info @greenbikeslc.org](mailto:info@greenbikeslc.org)

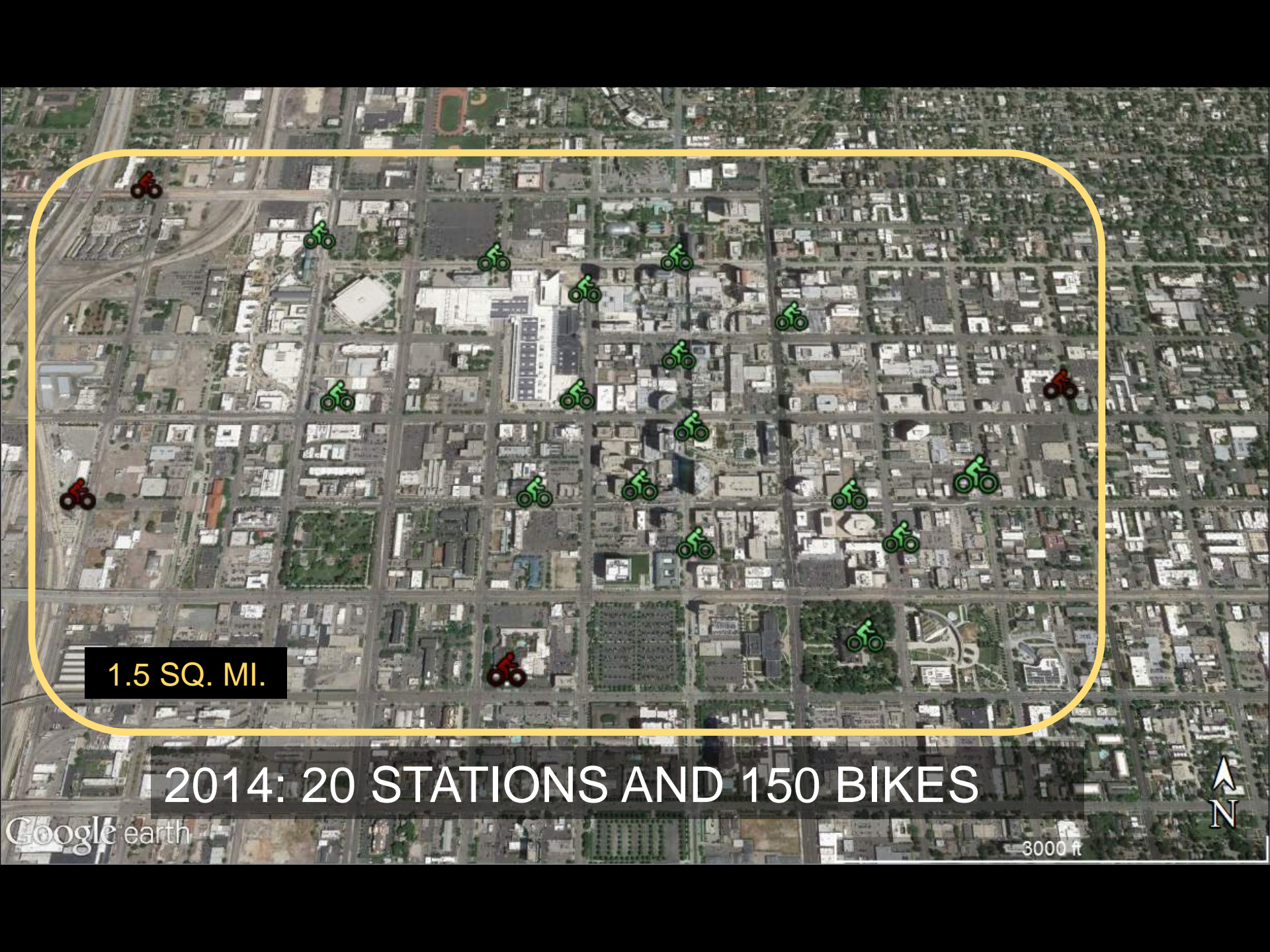


< 1 SQ. MI.

2013: 12 STATIONS AND 75 BIKES

Google earth

3000 ft



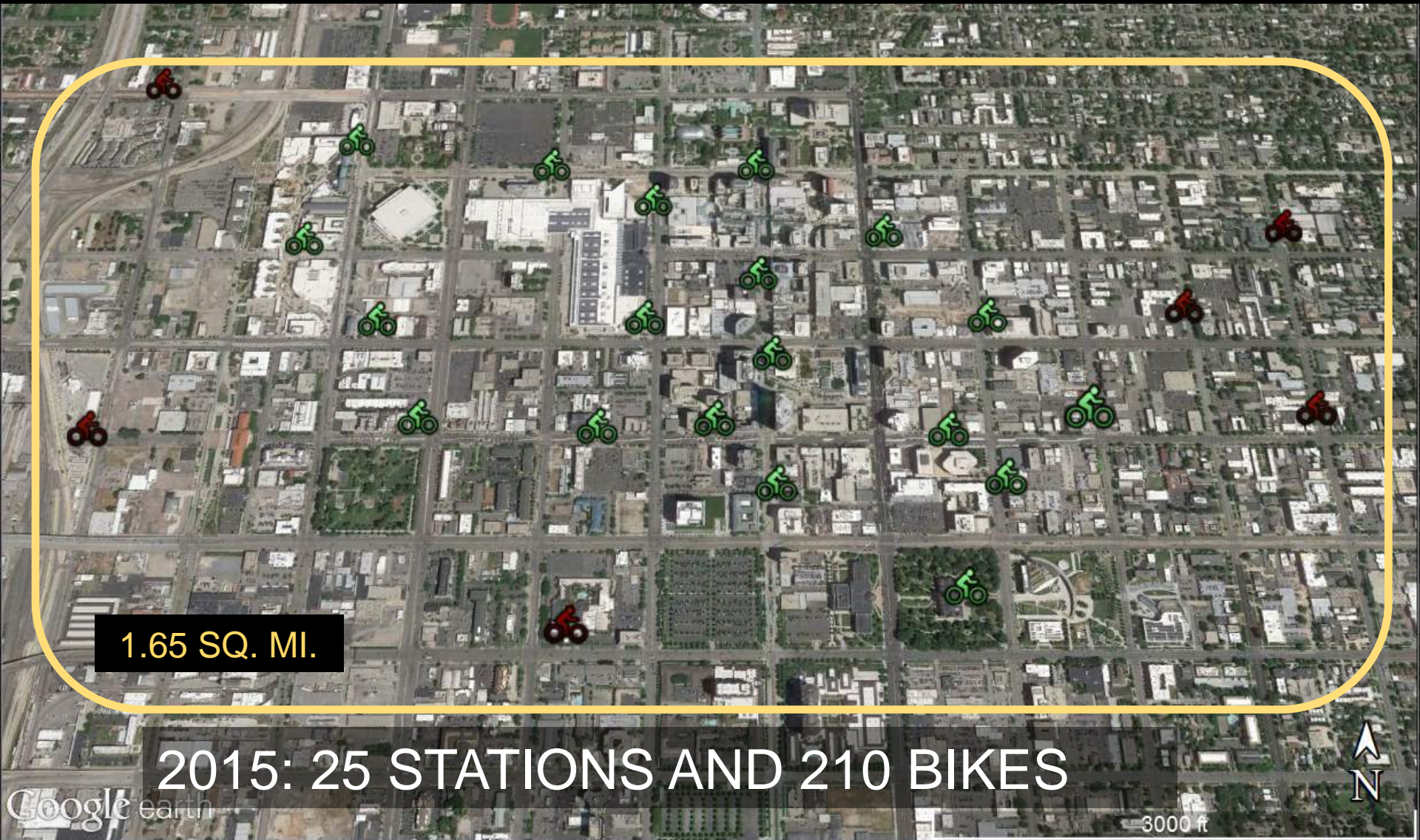
1.5 SQ. MI.

2014: 20 STATIONS AND 150 BIKES

Google earth



3000 ft



An aerial photograph of a city grid, likely San Francisco, showing a dense network of streets and buildings. Numerous bicycle icons are overlaid on the map, representing bike-sharing stations. Most icons are green, while a few are red. The icons are distributed across the grid, with a higher concentration in the central and eastern parts of the image.

261% EXPANSION IN TWO YEARS
(bikes+docks+pay kiosks)

2015: 25 STATIONS AND 210 BIKES

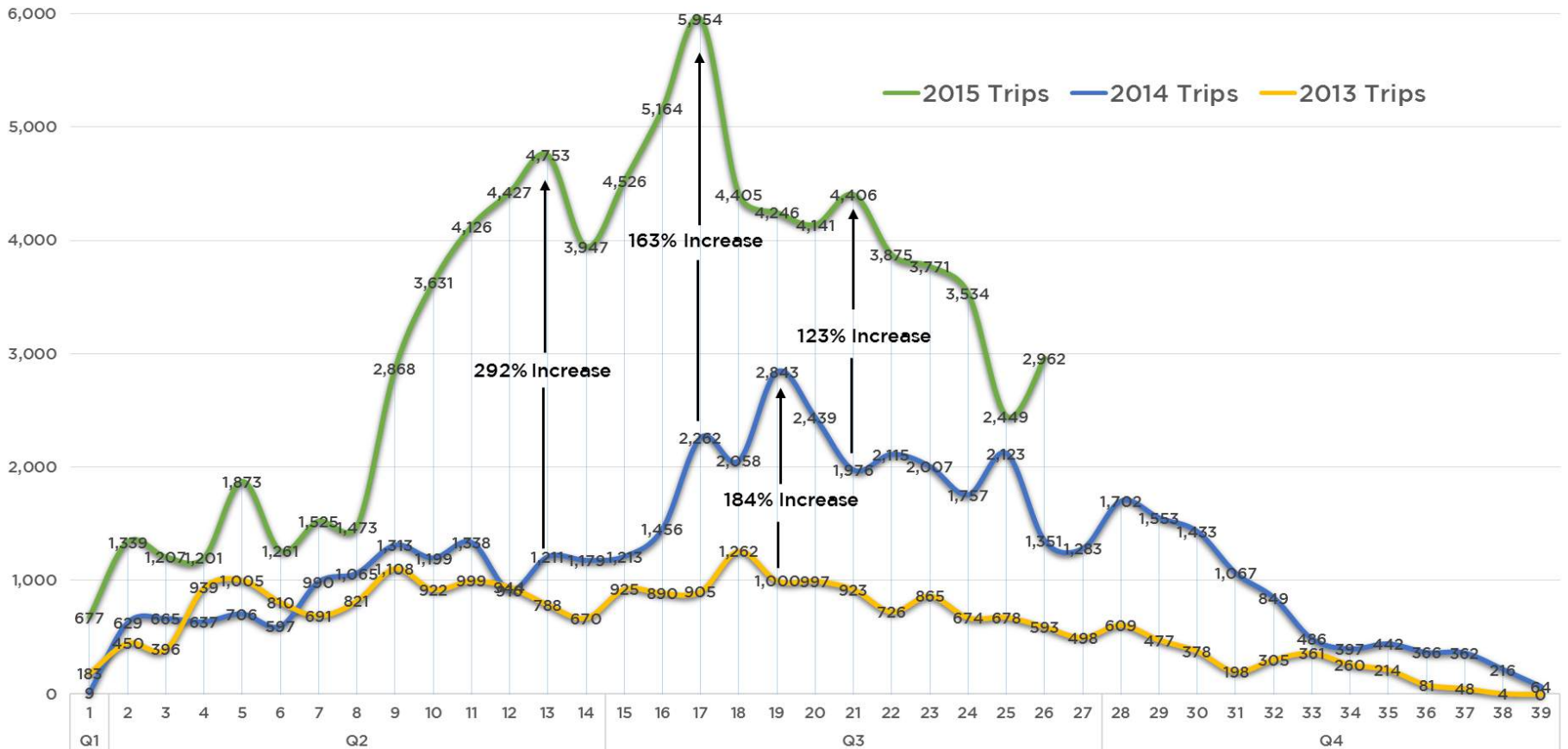
Google earth

3000 ft



GREENbike

Annual Ridership Growth - Weekly Trips



RIDERSHIP GROWTH (TRIPS)

Annual Ridership Growth - Weekly Trips





National Association of
City Transportation Officials

GREENbike *July 2015*
15 Stations per Sq. Mi.
3.3 rides per Bike per day

**WALKABLE STATION SPACING IS KEY
TO SUCCESSFUL, EQUITABLE BIKE SHARE**

System	Rides per Bike per Day ^a	Total Rides in 2014	Stations per Sq. Mi.
Vélib'	5.3	39,000,000	33
Citi Bike NYC	5.2	8,894,000	23
Ecobici Mexico City	5.0	7,952,000	22
Divvy	3.8	2,455,000	8
Capital Bikeshare	3.6	2,946,000	4
Hubway	3.2	1,193,000	5
Bay Area Bike Share ^b	2.5	2,455,000	2
Denver B-cycle	2.2	377,000	5
Nice Ride MN	1.6	415,000	4

^a Calculated from June 2014 data to account for winter closures in some systems.

Figures for Hubway and Vélib' are calculated from total 2014 trips.

^b Data reflects only the San Francisco portion of the Bay Area Bike Share system.

**WHAT DO YOU
VALUE MOST
ABOUT BIKE
SHARE?**

Citi Bike, 2013

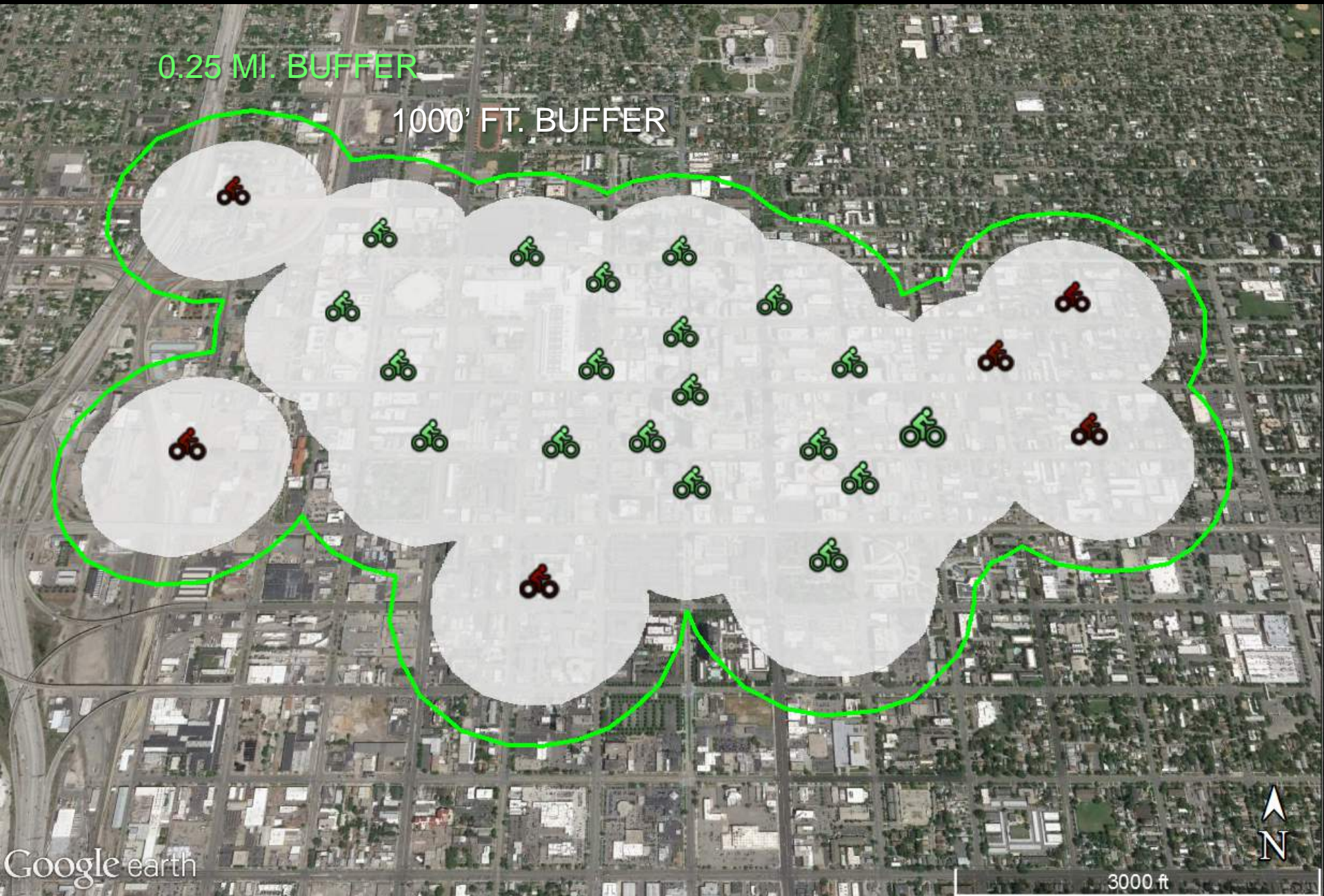


0.25 MI. BUFFER

1000' FT. BUFFER

Google earth

3000 ft





National Association of
City Transportation Officials

GREENbike *July 2015*
15 Stations per Sq. Mi.
3.3 rides per Bike per day

System	Rides per Bike per Day ^a	Total Rides in 2014	Stations per Sq. Mi.
Vélib'	5.3	39,000,000	33
Citi Bike NYC	5.2	8,894,000	23
Ecobici Mexico City	5.0	7,952,000	22
Divvy	3.8	2,455,000	8
Capital Bikeshare	3.6	2,946,000	4
Hubway	3.2	1,193,000	5
Bay Area Bike Share ^b	2.5	2,455,000	2
Denver B-cycle	2.2	377,000	5
Nice Ride MN	1.6	415,000	4

^a Calculated from June 2014 data to account for winter closures in some systems.

Figures for Hubway and Vélib' are calculated from total 2014 trips.

^b Data reflects only the San Francisco portion of the Bay Area Bike Share system.

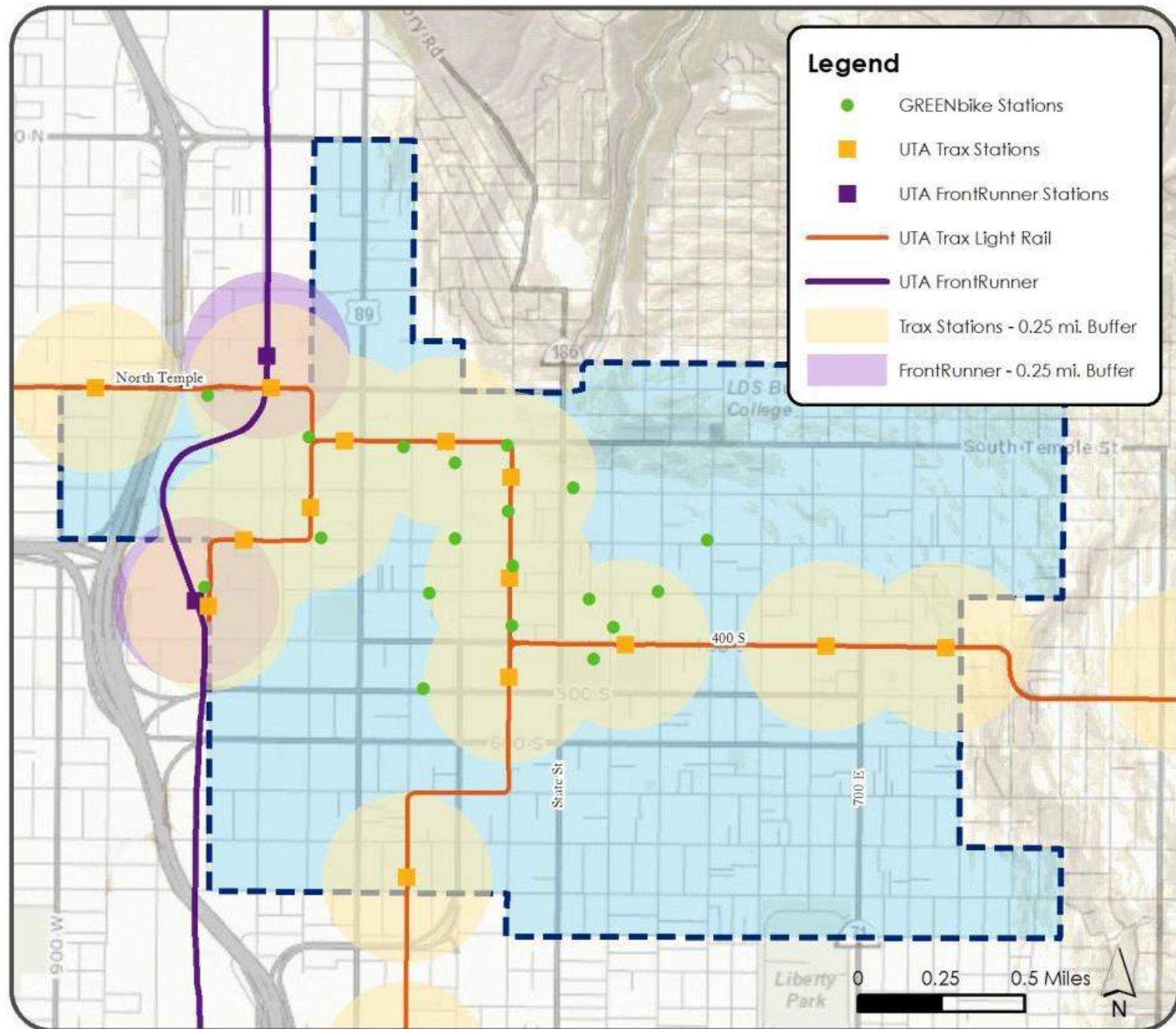
**WALKABLE STATION SPACING IS KEY
TO SUCCESSFUL, EQUITABLE BIKE SHARE**

**WHAT DO YOU
VALUE MOST
ABOUT BIKE
SHARE?**

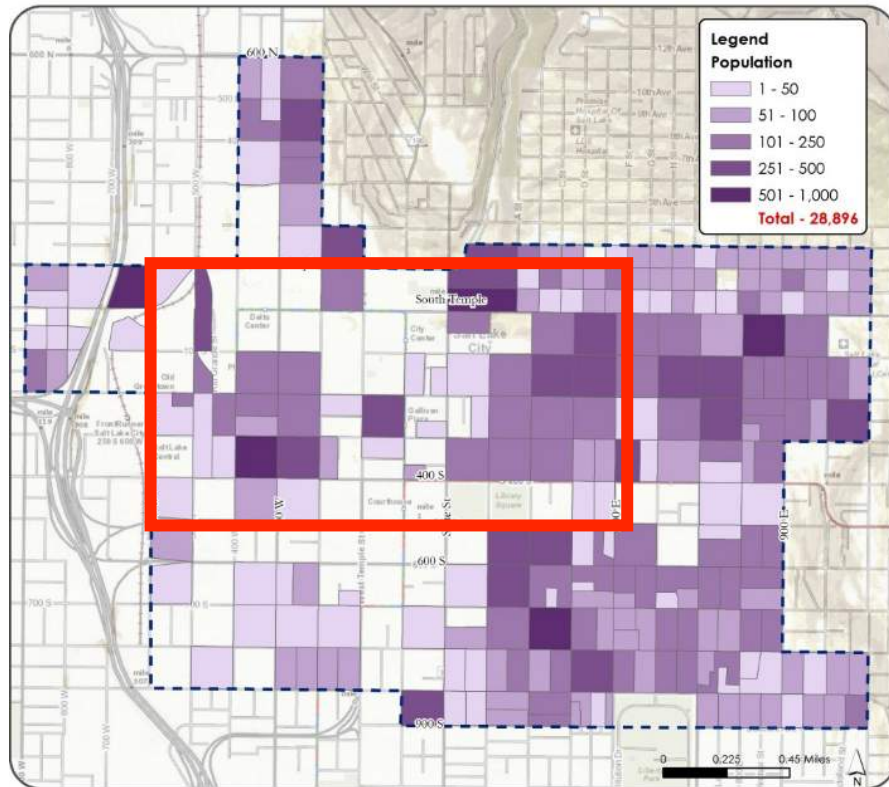
Citi Bike, 2013



TRANSIT IN SERVICE AREA

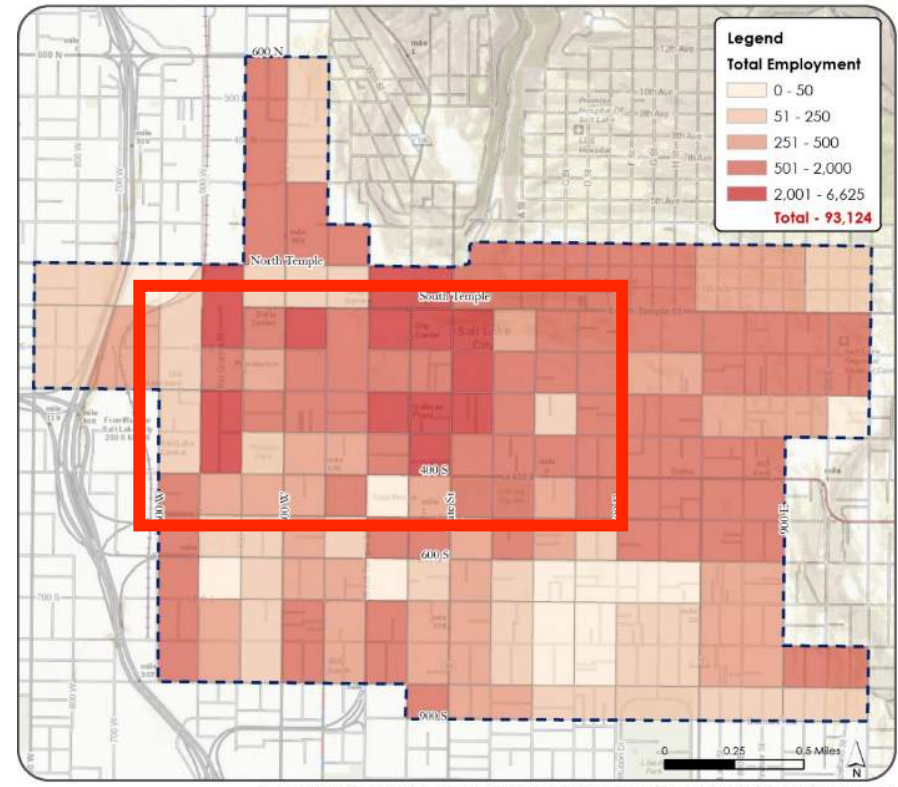


RESIDENTIAL IN SERVICE AREA



Source: Utah Automated Geographic Reference Center dataset derived from 2010 US Census Bureau Data (2011, June).
 Retrieved from <http://gis.utah.gov/data/demographic/2010-census-data/>

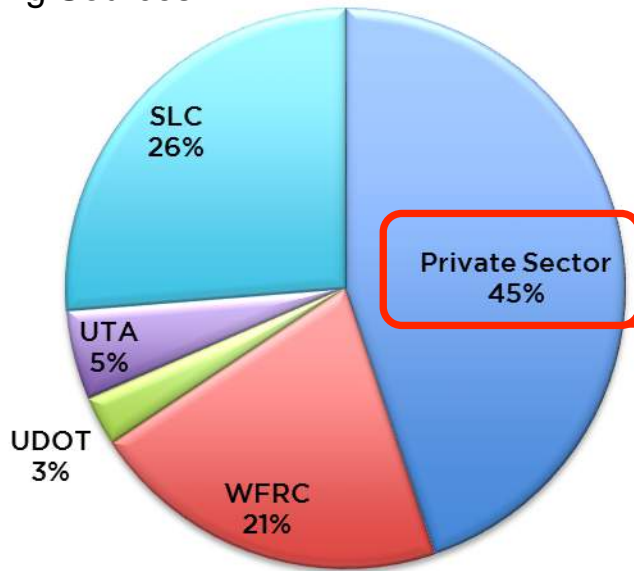
EMPLOYMENT IN SERVICE AREA



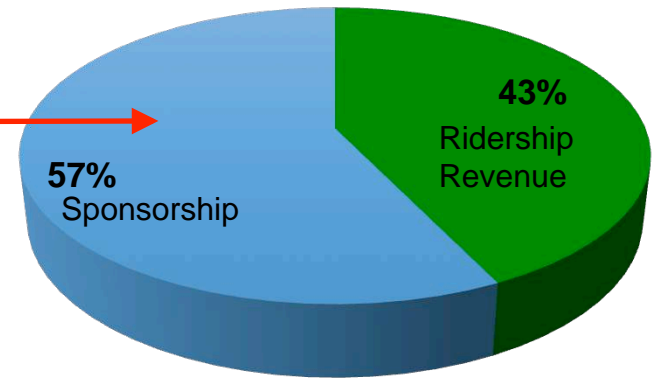
Source: Wasatch Front Regional Council /Mountainland Assoc. of Governments Regional Travel Model, Version 7.0 (2011, February 1).
 The WFRM-MAG travel model was used in this study, but the results and conclusions have not been warranted by either WFRM or MAG.



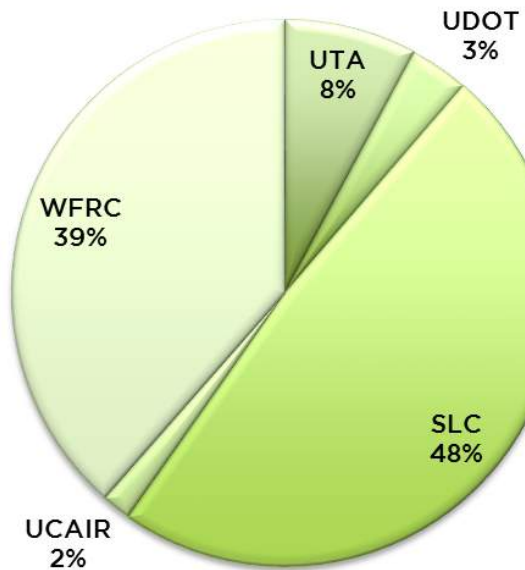
Total Funding Sources



Fare Box Rate: 25 Stations/ 210 Bikes



Total Capital Funding



UTAH TRANSIT AUTHORITY:

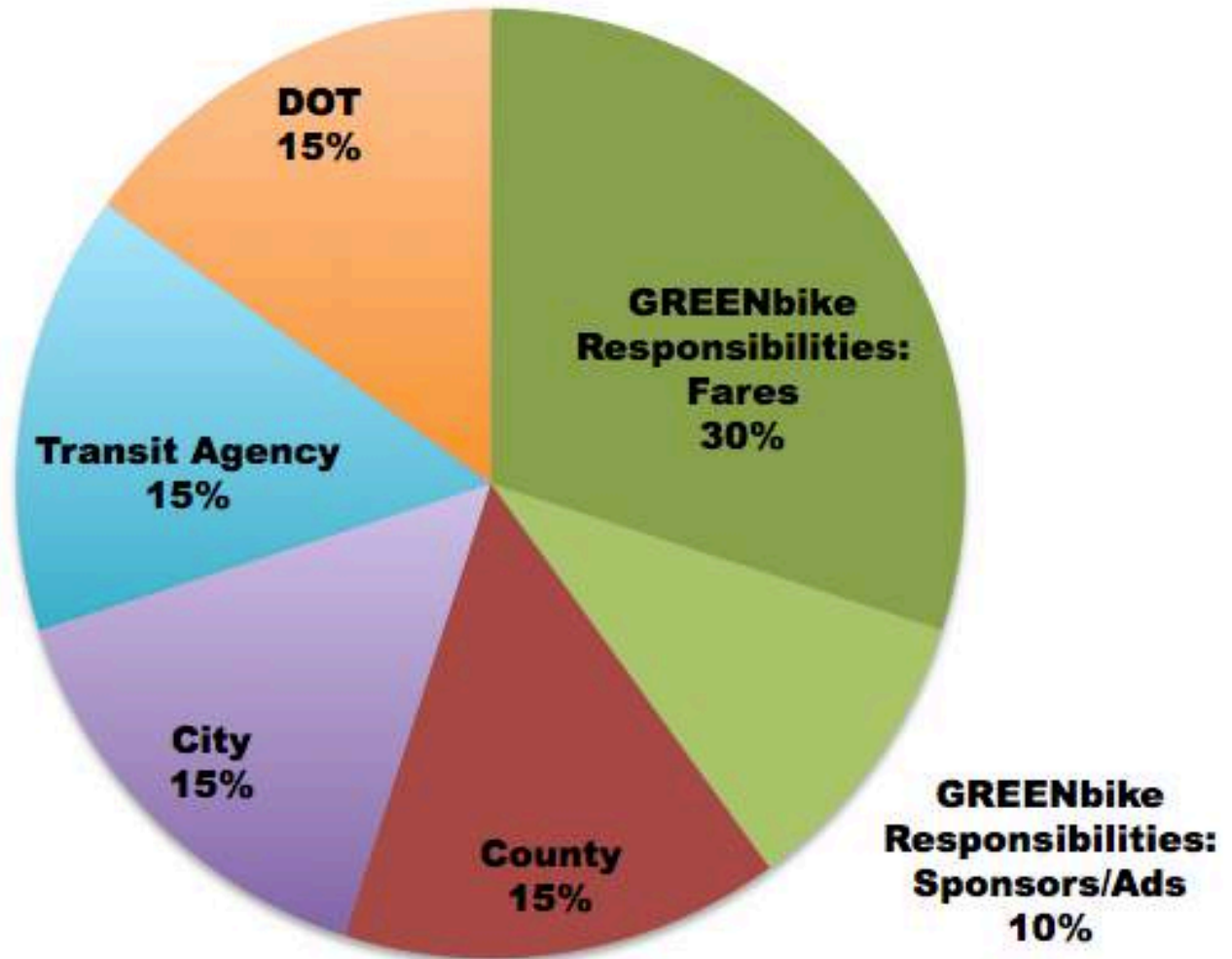
BID 15-1255PP: DEVELOPMENT OF THE GREENBIKE REGIONALIZATION GOVERNANCE STRUCTURE AND POLICY

June 12, 2015





Potential Operational Funding Model



INTEGRATED PAYMENT



SEAMLESS USER EXPERIENCE