



GREEN STREETS, GREEN CITY

Philadelphia's Green Transportation Partnership Portfolio

A wide-angle photograph of the Philadelphia skyline across the Schuylkill River. The river flows from the foreground towards the city, with a bridge visible in the middle ground. The skyline is filled with various skyscrapers, including the Comcast Building (One Liberty Place) on the left and the Comcast Tower (One Comcast Center) on the right. The foreground is lined with lush green trees and foliage. The sky is a clear, pale blue.

**PHILADELPHIA
WATER**
— EST. 1801 —



WHY GREEN YOUR TRANSPORTATION ASSETS

Why is Philadelphia is developing a portfolio of green transportation projects?



HOW DO YOU GREEN YOUR TRANSPORTATION ASSETS

What are the programmatic, design, and engineering choices Philadelphia faces in bringing its program to scale?



WHAT'S IS IN OUR PORTFOLIO OF GREEN TRANSPORTATION ASSETS

What sort of projects make up Philadelphia's Green Transportation Partnership Portfolio?



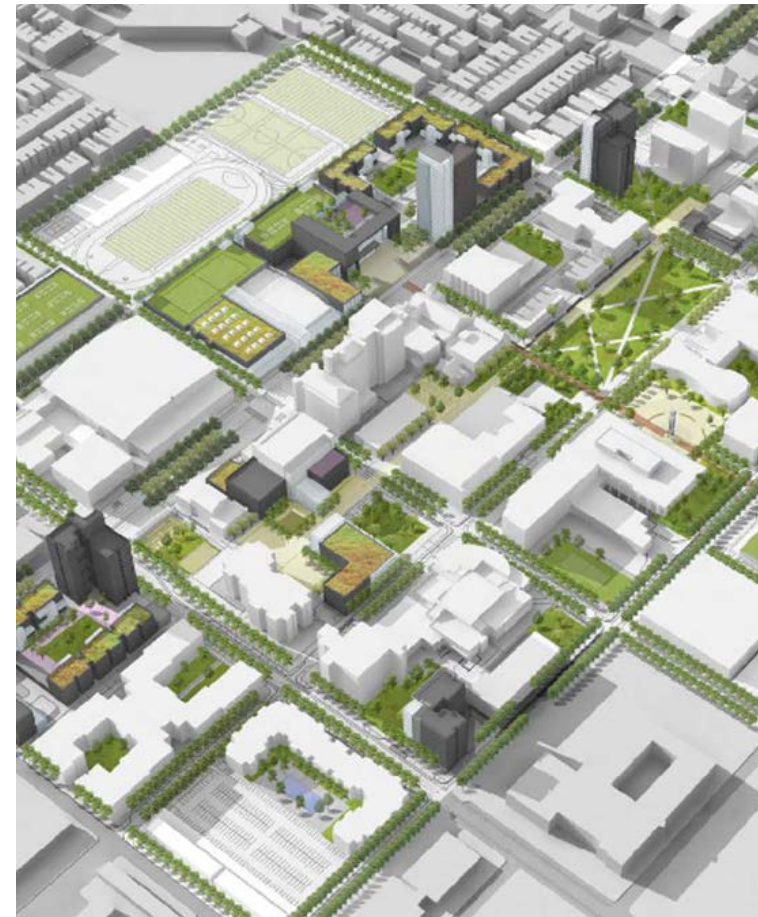
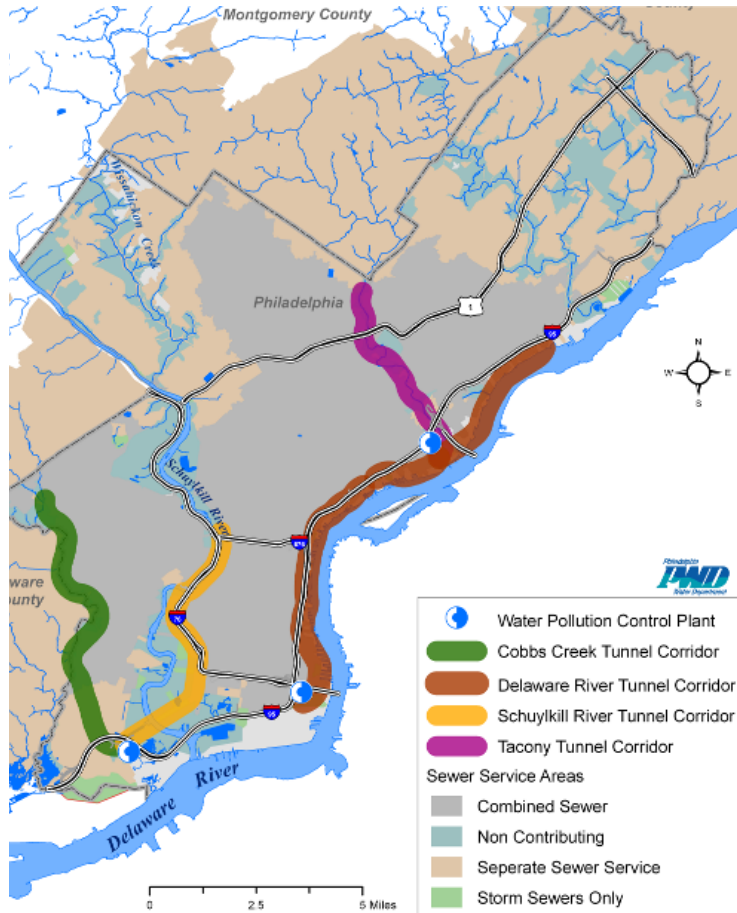
WHY GREEN TRANSPORTATION ASSETS?



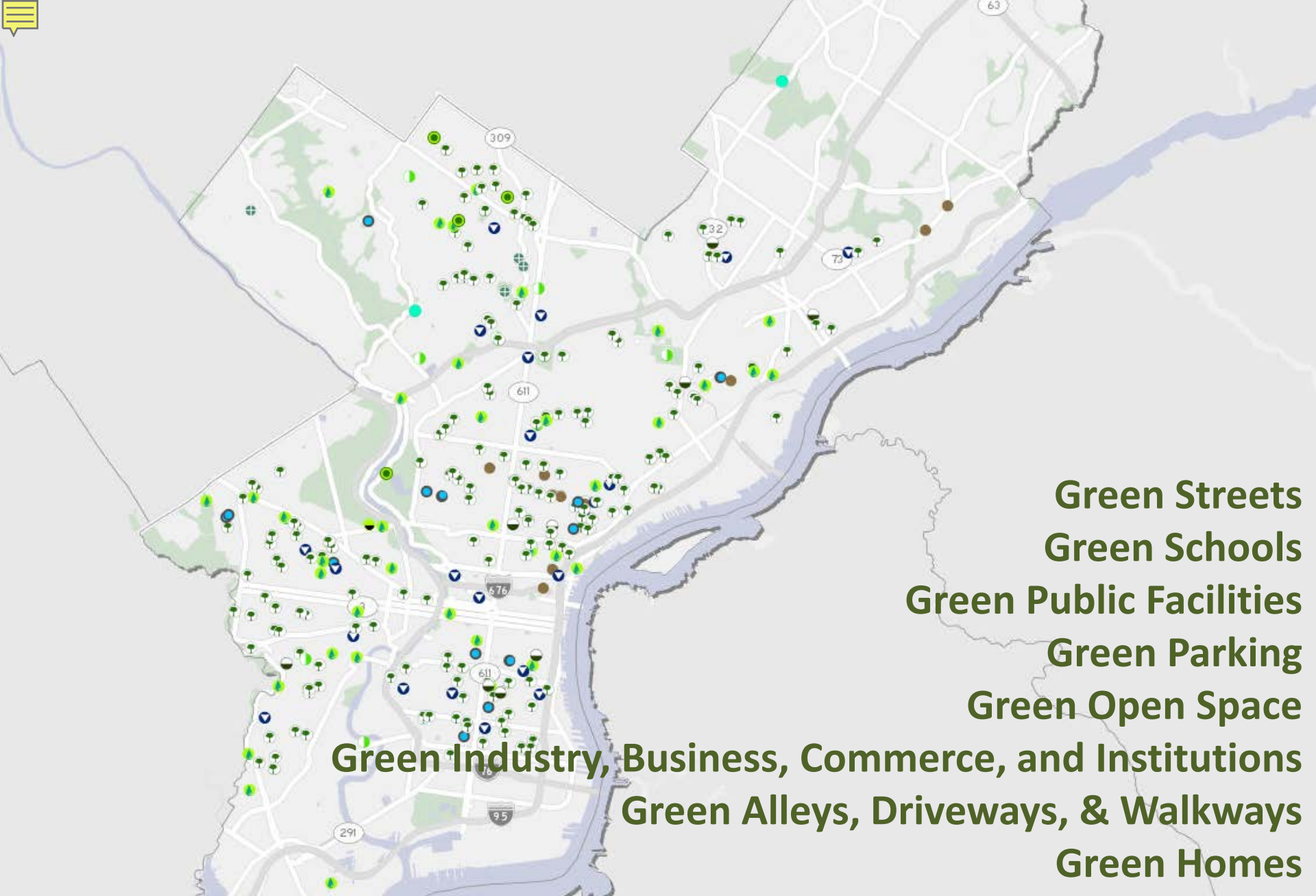
WHY GREEN TRANSPORTATION ASSETS?



WHY GREEN TRANSPORTATION ASSETS?

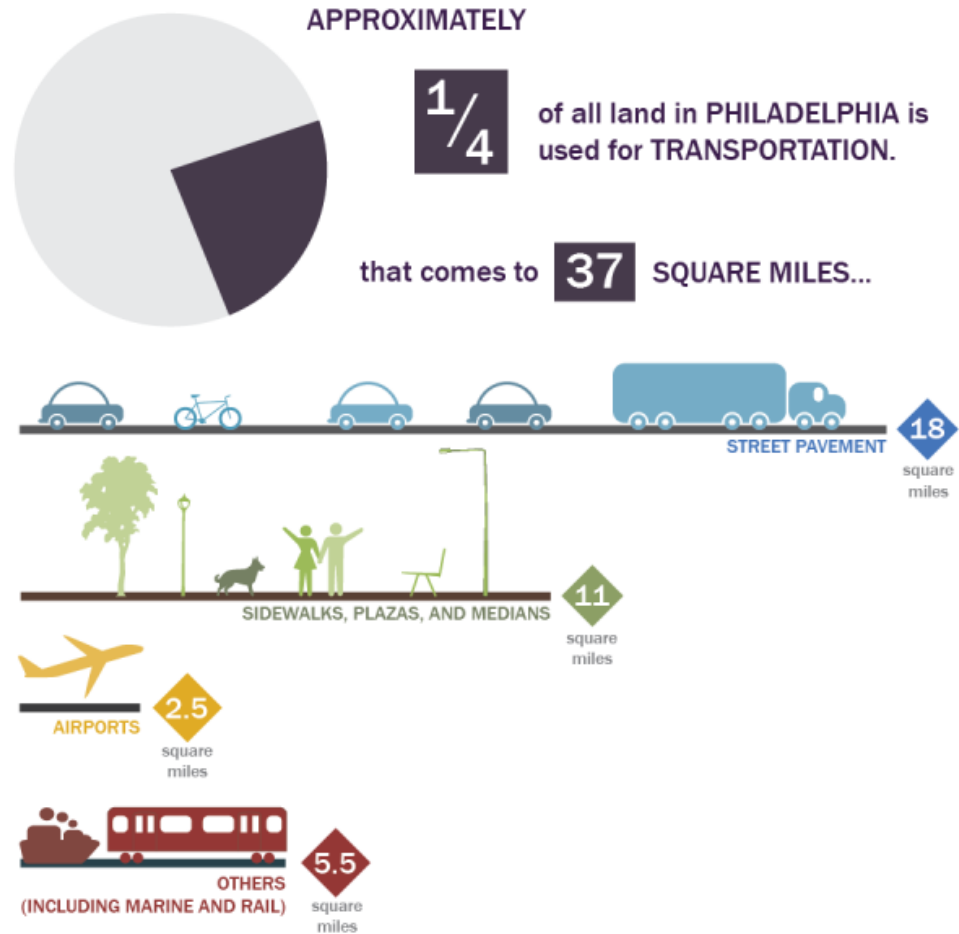


WHY GREEN TRANSPORTATION ASSETS?



Green Streets
Green Schools
Green Public Facilities
Green Parking
Green Open Space
Green Industry, Business, Commerce, and Institutions
Green Alleys, Driveways, & Walkways
Green Homes

WHY GREEN TRANSPORTATION ASSETS?



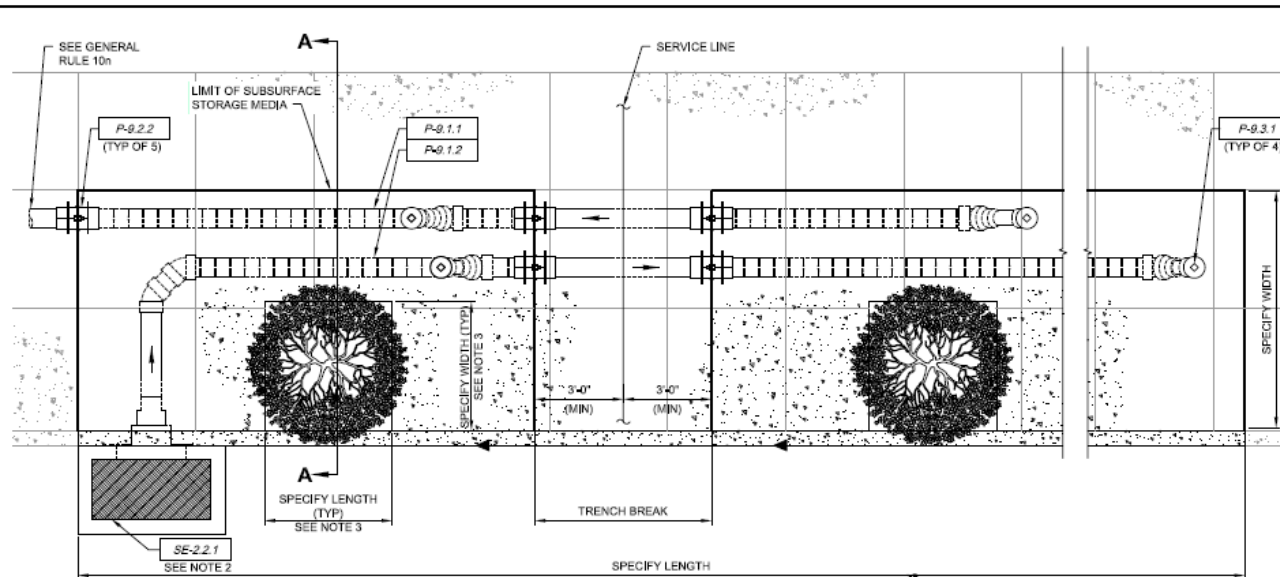


WHY GREEN TRANSPORTATION ASSETS?

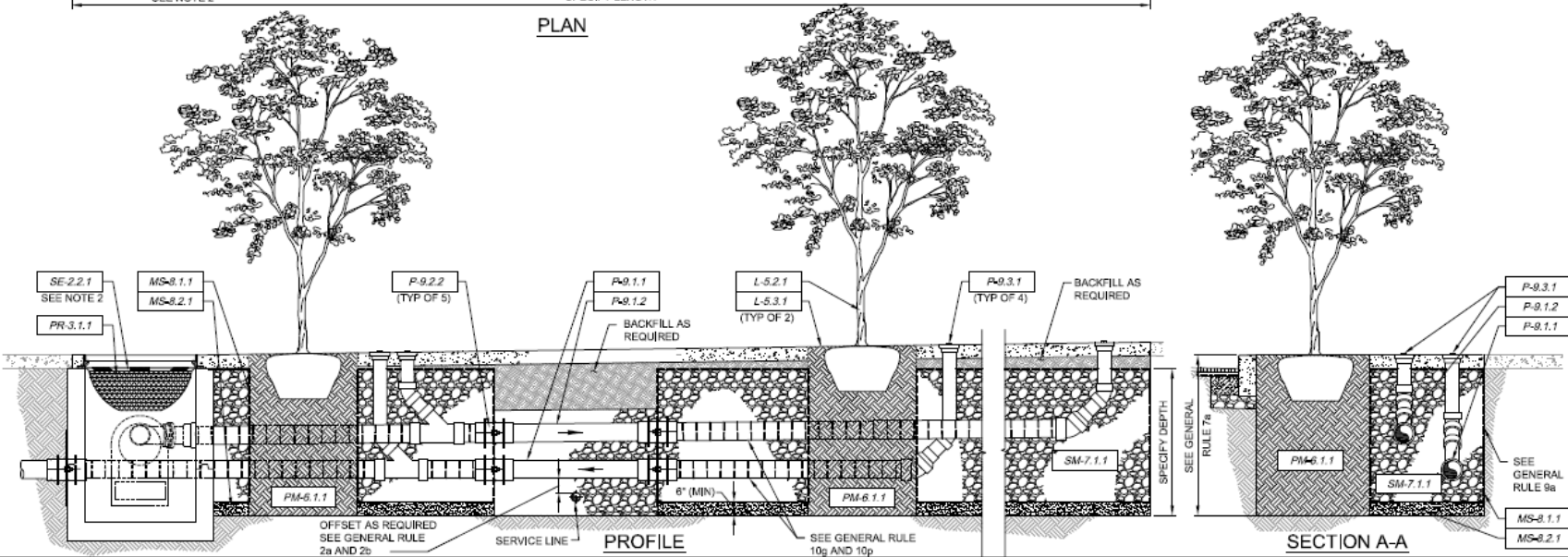
City of Philadelphia Green Streets Design Manual



HOW DO YOU BRING IT TO SCALE?



PLAN



NOTES TO DESIGNER:

1. This design detail should be adapted to your specific engineered design and its respective installation.
2. Green Inlets are the most typical Inlet used for stormwater tree trenches. While a highway grate type green Inlet is depicted and preferred, designers may use a PWD Standard city Inlet type as the green Inlet if there are utility conflicts or other constraints that preclude installation of a highway grate Inlet type.
3. The minimum tree pit dimension is 3'-feet by 3'-feet. Larger tree pit areas are preferred for the health of the tree and should be used if space is available. Tree pit may also be rectangular in shape.
4. Design should include the number, spacing, and species selection of trees. The city of Philadelphia's *Concrete Streets Design Handbook* provides a Street Tree Planting Diagram that can be referenced for tree placement. Note that locations and species of all trees are reviewed and approved by PP&R. PP&R can also select tree species, if requested.
5. Although surface is shown as concrete sidewalk, tree trenches can be constructed in conjunction with various surfaces including grass strips, pavers, and other materials. Surface restoration will vary accordingly.

APPLICABLE DESIGN COMPONENTS

(L) Landscaping

- ☑ 5.2.1 Trees
- ☑ 5.3.1 Mulch

(MS) Media Separation

- ☑ 8.1.1 Geotextile
- ☑ 8.2.1 Sand Filter

(P) Piping

- ☑ 9.1.1 Underdrain
- ☑ 9.1.2 Distribution Pipe
- ☑ 9.2.2 Anti-sweep Collar
- ☑ 9.3.1 Cleanout

(PM) Planting Media

- ☑ 6.1.1 Engineered Soil

(PR) Pretreatment

- ☑ 3.1.1 Filter Insert

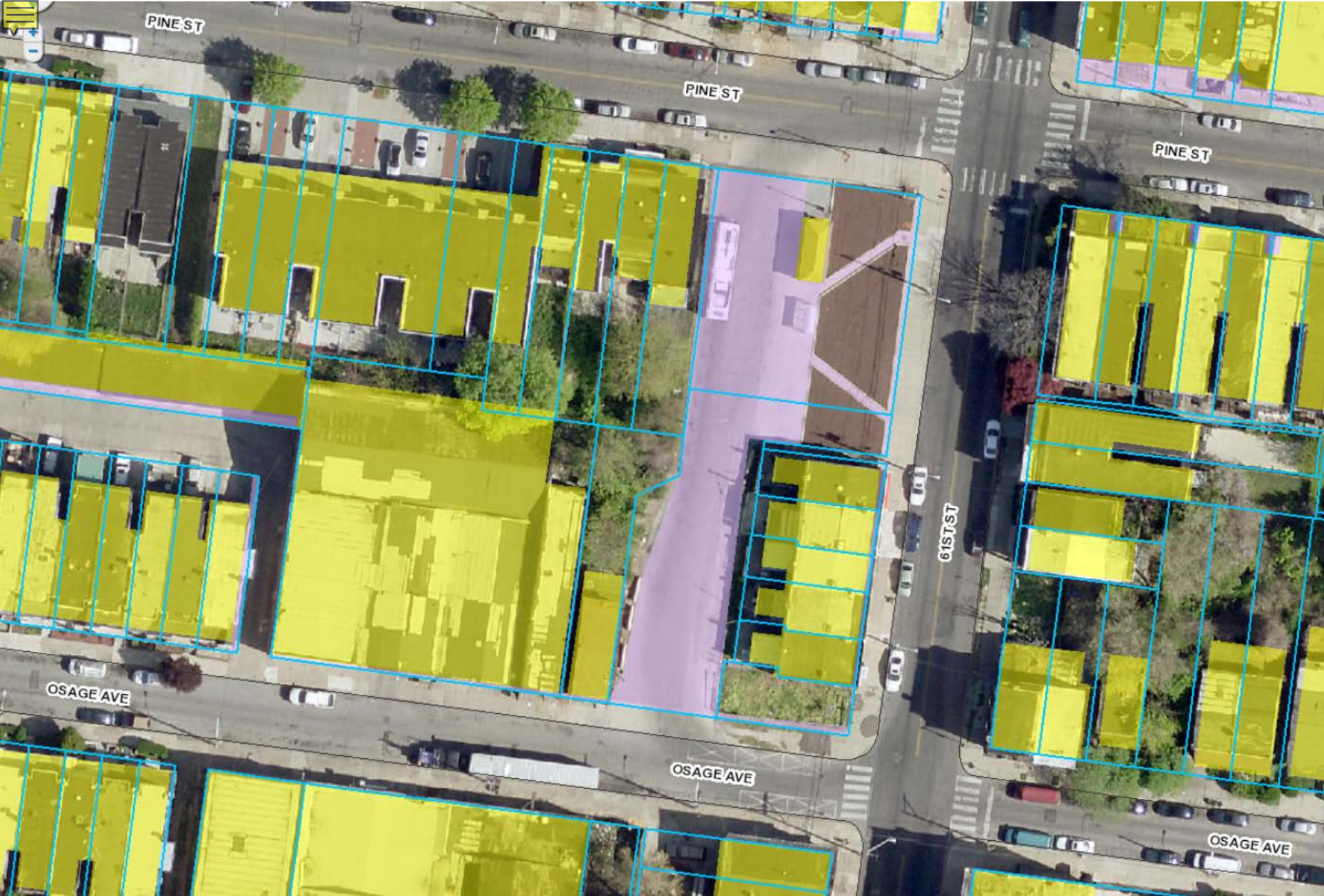
(SE) Stormwater Entrance

- ☑ 2.2.1 Green Inlet

(SM) Storage Media

- ☑ 7.1.1 Stone

HOW DO YOU BRING IT TO SCALE?



HOW DO YOU BRING IT TO SCALE?

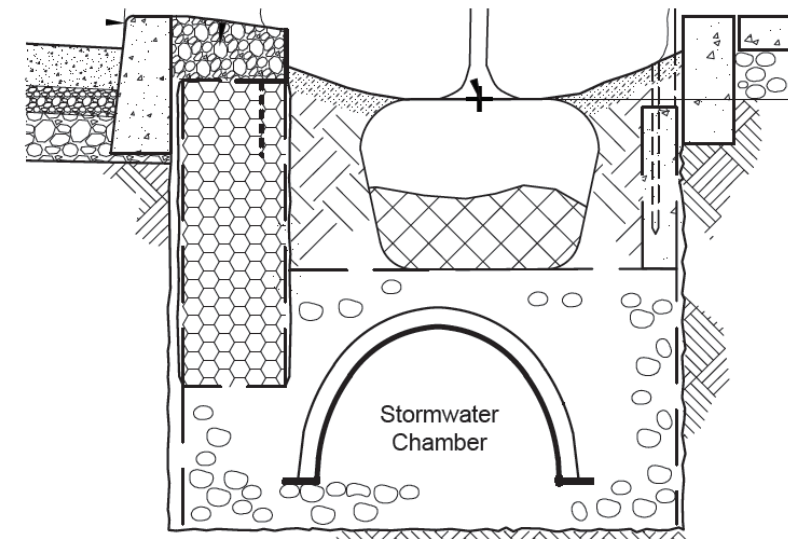
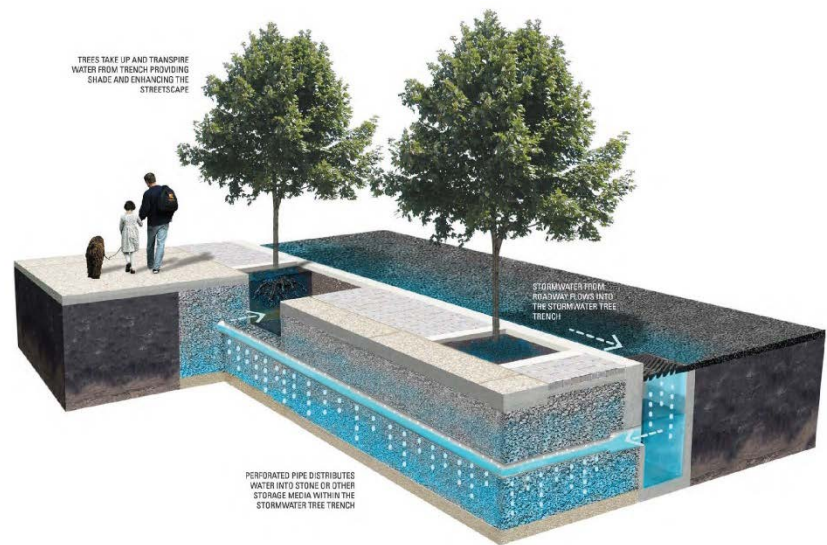
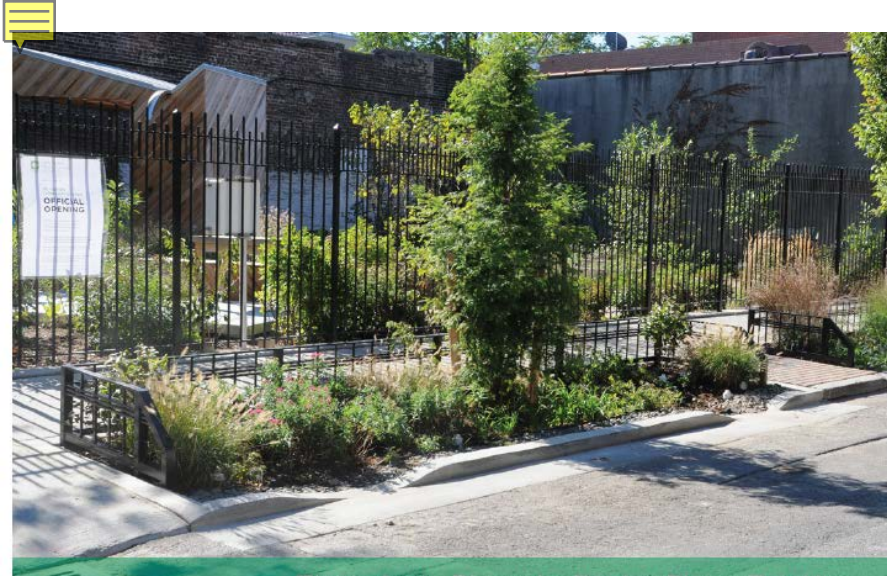


Figure 7: Right-of-way Bioswale stormwater chamber detail, *Standards for Green Infrastructure*, October 2013.

HOW DO YOU BRING IT TO SCALE?

LIMITS: Ridge Ave to Aramingo Ave

Est Let Date: 1/16/2017

MUNICIPALITIES: Philadelphia City

IMPROVEMENT: Intersection/Interchange Improvements

FC: 16

AQ Code:A2

DVRPC PLANNING AREA: Core City

IPD: 6

PROJECT MANAGER: Gannett/B. Masi

CMP: Not SOV Capacity Adding

CMP Subcorridor(s): 4B, 14A, 15A

This project includes the installation of flashing school signs and speed limits at select locations within the corridor. Install or improve the lighting at the railroad underpasses between 17th and 19th Streets and at Kensington Ave. Install pedestrian fences (or appropriate landscape alternative), to prevent or discourage jaywalking, at select locations. Reconfigure the intersection of Germantown Ave, Sedgley Ave and 11th Street to reduce pedestrian crossing distances and driver confusion.

TIP Program Years (\$ 000)											
Phase	Fund	FY2015	FY2016	FY2017	FY2018	FY2019	FY2020	FY2021	FY2022	FY2023	FY2024
FD	TOLL										
FD	HSIP	955									
CON	HSIP										
		955	0	0	0	0	0	0	0	0	0
		Total FY2015-2018		955		Total FY2019-2022		0		Total FY2023-2026	

Allegheny Avenue Safety Improvements

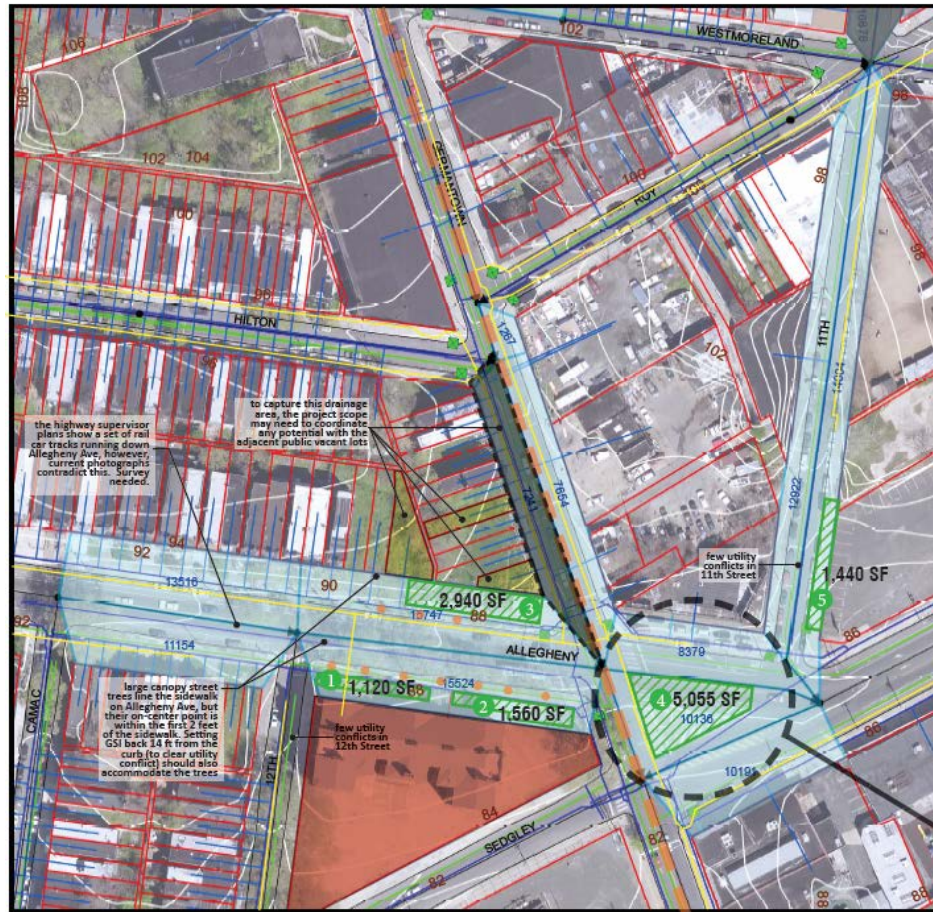


53rd & Baltimore Ave



SEPTA 61st & Pine Bus Loop

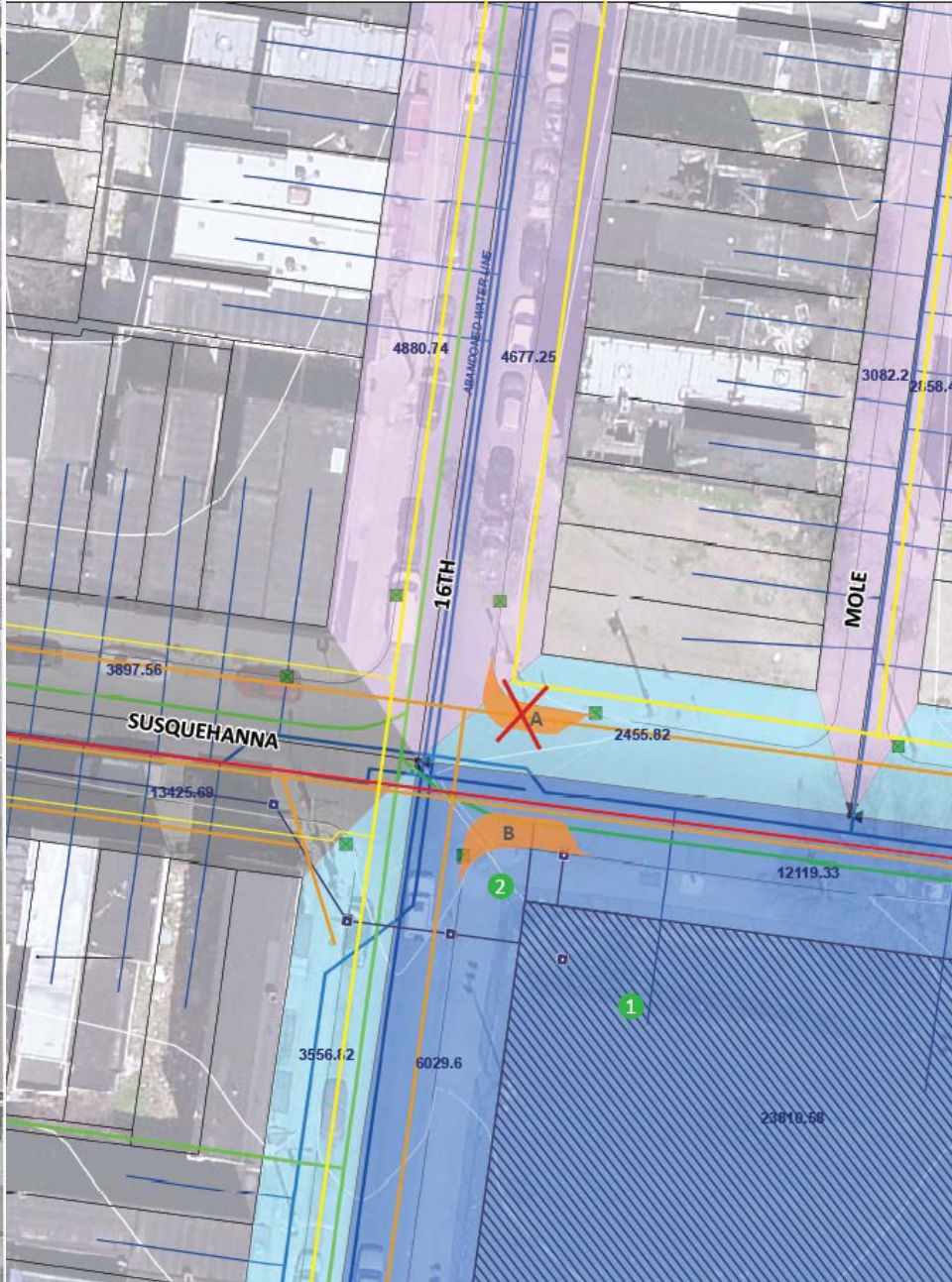
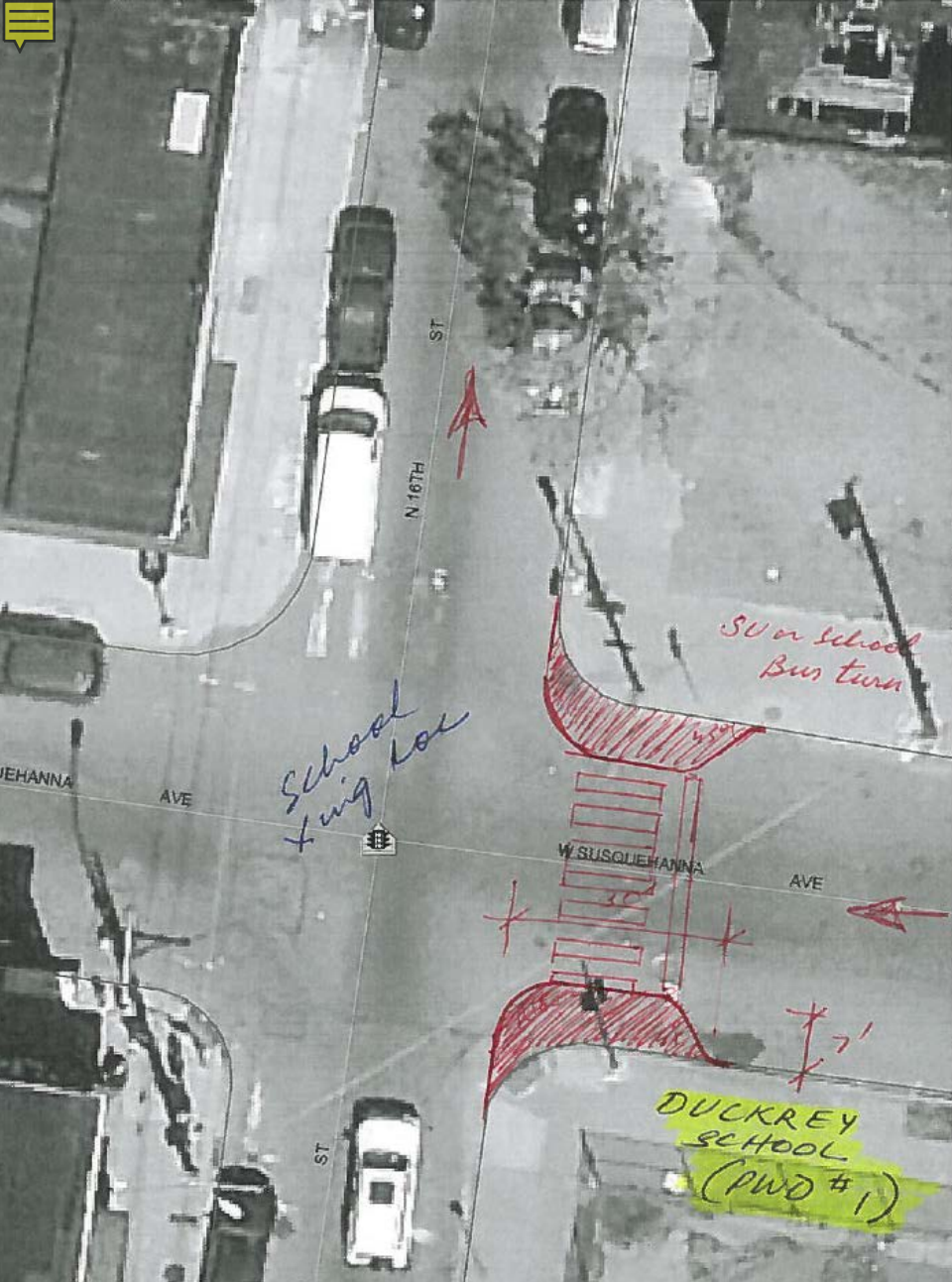




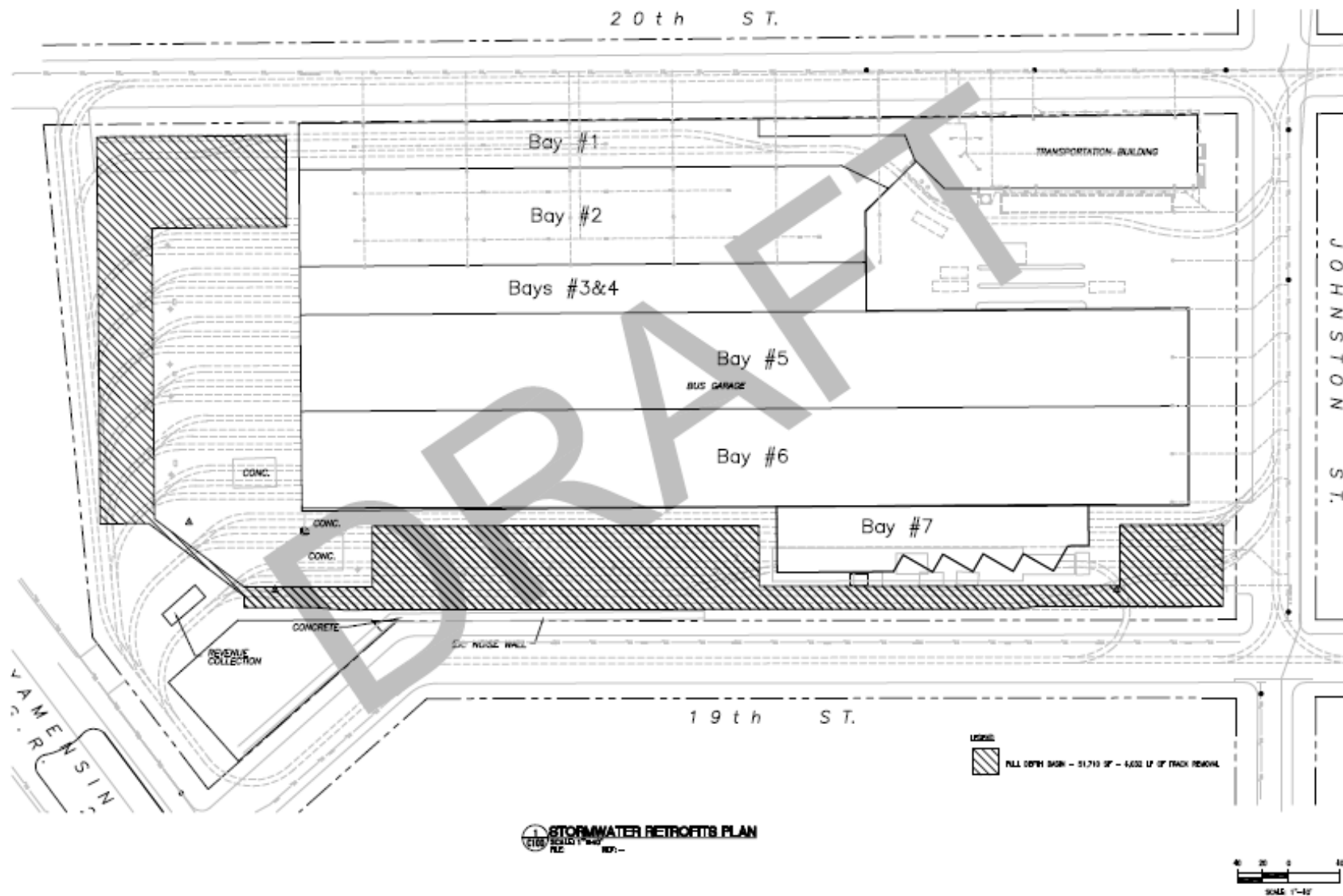
A PORTFOLIO OF INVESTMENTS



A PORTFOLIO OF INVESTMENTS



A PORTFOLIO OF INVESTMENTS



A PORTFOLIO OF INVESTMENTS

GREEN STREETS, GREEN CITY QUESTIONS?

Ariel Ben-Amos

Ariel.Ben-Amos@phila.gov

215-685-6084

**PHILADELPHIA
WATER**
— EST. 1801 —