



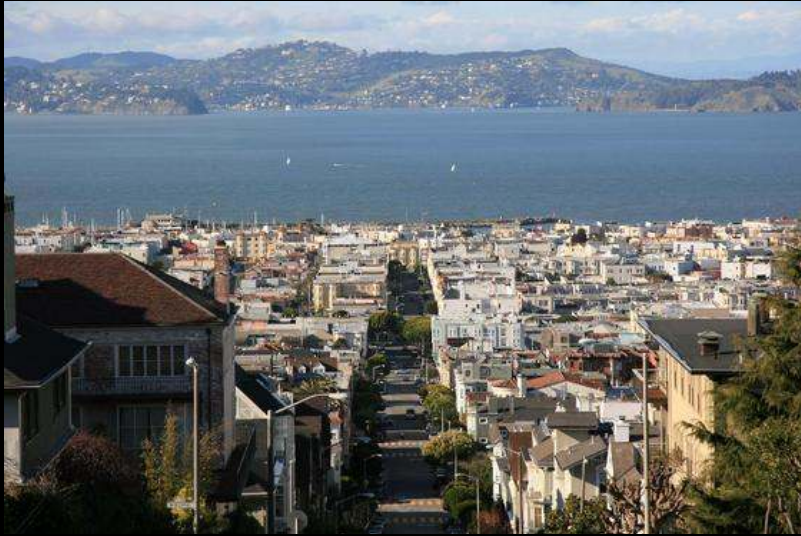
# Creativity in the Curb Lane

Designing Natural Ecology  
within an Urban Setting

Jane Martin

AIA / ASLA / APLD / LEED AP





San Francisco – as its residents and the world experiences it





San Francisco – as its residents also experience



Simple idea: Remove excess pavement & put in a garden, 2003





One Small Project: A Sidewalk Garden



- 
- Reduces sidewalk parking
  - Eliminates sidewalk driving
  - Reduces illegal dumping/trash
  - Increases access to plants/nature
  - Infiltrates rain into earth
  - Increases safety
  - Increases shading/cooling
  - Improves air quality
  - Creates habitat & forage for insects/birds
  - Provides potential to grow edibles (food)
  - Increases interactions with neighbors

Immediate Results





## CONTEXT 1

Combined sewer system - building wastewater combines with storm water



When volume exceeds capacity - Combined Sewer Overflows and backups





Result: Disruption, damage and health hazards of E.coli and Hepatitis A

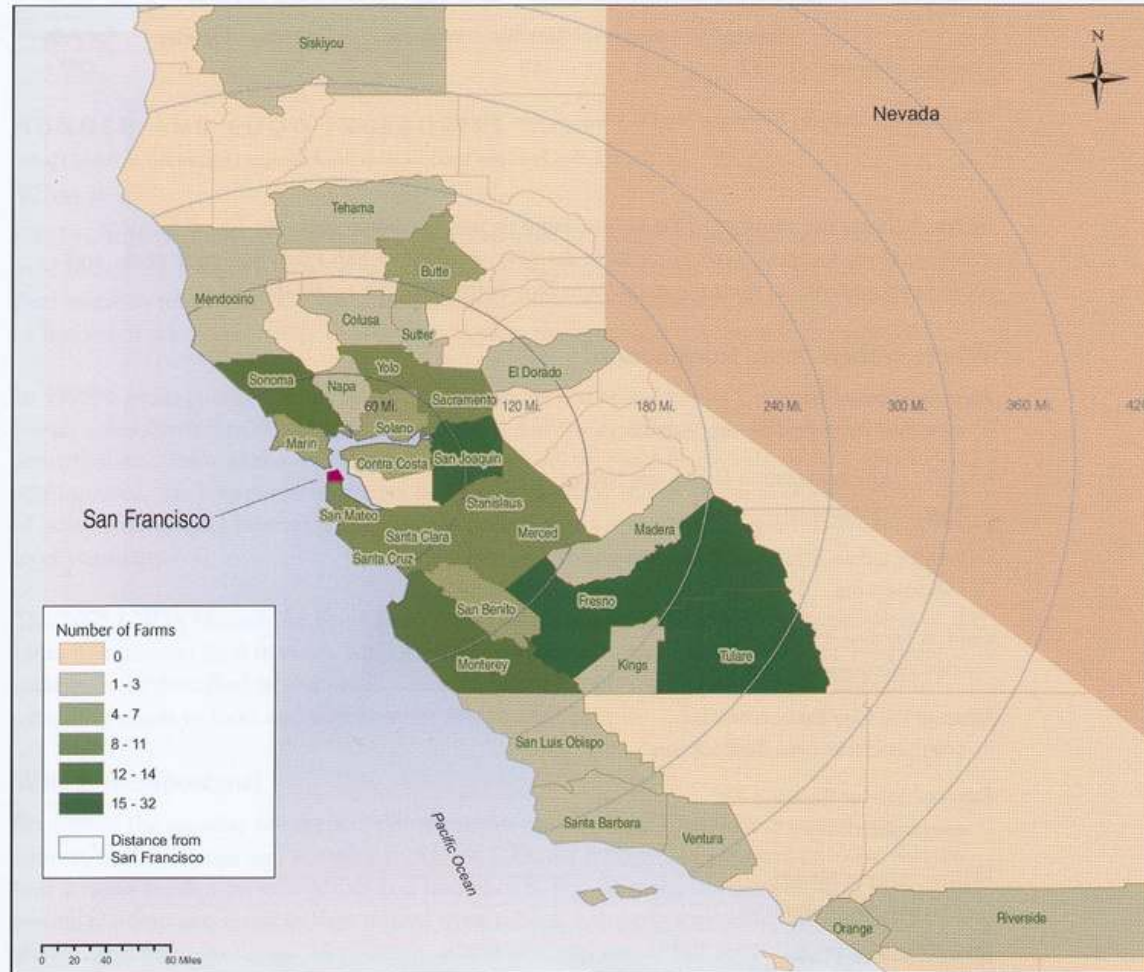


## CONTEXT 2

Water supply is from Yosemite, 160 miles away



**MAP 14.** Farms Coming into San Francisco for Farmers' Markets



## CONTEXT 3

Food Security: 'Local' Food is 60-400 Miles Away (100-650km)



De-pave excess concrete – keep rain out of sewer, replenish aquifer, grow plants











































Engaging people with public space to steward the environment





Park-ing Day: Alternative use of Curb Lane





An out of town visitor who enjoys Golden Gate Park.



A former resident who has recently moved back.



A visitor from Chicago.



Supervisor Ma has been very supportive of de-paving.



Yomi Agunbiade pitches in for District 5.



Rebar organizer, John Bela.



Resident and daughter from District 8.



Members of the Mission Coalition, a group of 30+ non-profits based in the Mission District.



District 6 residents.



By the end of the installation, all districts were represented.



Supervisor McGoldrick receives his dahlia.

Mayor's Parking space: Engage citizens with City Government





SF Planning Department: "Pavement to Parks" program 2009



Site: 9,000 sf of excess roadway identified for temporary park





Engage neighbors to increase scope and impact



Native species at sidewalks, apple trees at de-paved medians





Found materials, simple construction details



Seating, sculpture, raised planters





Physical engagement & social media



Active recreation: Unstructured play



Guerrero Park Plant List  
revised 8/23/19



Log Planted at "Blue/Purple" section, 2019

Guerrero Park is a "Yardwork to Parks" project in San Francisco established in September 2009 and located at the intersection of San Jose Avenue, Guerrero Street and 28th Street in the Inner Mission District. PlantSF invites you to take the plant list along on your next visit.

Steve Martin, founding director of PlantSF and principal of Staff Design Studio designed the park and provided plant selection and placement services.

With two exceptions (bamboo and apple trees), these plants were sourced from the Recreation and Parks Department's Golden Gate Park Nursery, however nearly all are commercially available through local nurseries. All are climate adapted (through tolerance), meaning they require very little supplemental watering once established. In home gardens they should not need irrigation.

The plantings are arranged primarily by color. Additional groupings appear in the raised cylindrical planters. Bamboo species line the western edge of the park. The three most log planters contain Blue/Purple, Red/Orange and Yellow selections. The stone planters contain white flowering plants with fruiting apple trees. Four species of fallen logs were sourced from Golden Gate Park. See on-site signage for further information.

BLUE/PURPLE	<i>Agave attenuata</i>	Succulent
	<i>Euhadra elegans</i>	Succulent
	<i>Fatsia</i> 'Super Tooth Seal'	Perennial
	<i>Hebe</i> <i>collis glauca</i> 'Blue Pacific'	Shrub
	<i>Hesperaloe parviflora</i> (Cane Flower)	CA Perennial
	<i>Ribes</i> <i>diversiflorum</i>	Succulent
	<i>Leucodendron argenteum</i>	Shrub
	<i>Limonium</i> 'Pavot' (Glaucous)	Perennial
	<i>Penstemon</i> 'Blackbird'	Perennial
	<i>Penstemon</i> 'Peter's Purple'	Perennial
<i>Podocarpus macrophyllus</i>	Tree	
<i>Polygala dalmaniana</i> (Snowcap)	Perennial	
<i>Protea</i> 'Susanne'	Shrub	
<i>Protea eximia</i> 'Duchess'	Shrub	
<i>Salvia</i> <i>aplana</i> 'Ceremonial White'	CA Shrub	
<i>Salvia</i> <i>clevelandii</i> 'Alden Chickering'	CA Shrub	
<i>Sayornis</i> <i>delium</i> (Blue Eyed Grass)	CA Perennial	
<i>Sedum</i> (various)	Succulent	

RED/ORANGE	<i>Achillea</i> <i>mitelofolium</i> 'Paprika'	Perennial
	<i>Aconitum</i> (various)	Succulent
	<i>Aloe</i> (various)	Succulent
	<i>Carex</i> <i>testacea</i> 'Prarie Fire'	Perennial
	<i>Coprosma</i> 'Evering Gold'	Shrub
	<i>Gaillardia</i> 'Arizona Sun'	Perennial
	<i>Galvezia</i> <i>speciosa</i>	CA Perennial
	<i>Hebe</i> <i>kenoasiensis</i>	Shrub
	<i>Lantana</i> <i>camara</i> 'Radiator'	Shrub
	<i>Leonotis</i> <i>leonurus</i> 'Orange' (Lion Tail)	Perennial
<i>Leucodendron</i> 'Jester'	Perennial	
<i>Leucodendron</i> <i>irifolium</i>	Perennial	
<i>Leucodendron</i> 'Safari Sunset'	Perennial	
<i>Mimulus</i> <i>aurantiacus</i>	CA Perennial	
<i>Mimulus</i> <i>paniculatus</i>	CA Perennial	
<i>Penstemon</i> 'Raspberry Parfait'	Perennial	
<i>Phormium</i> <i>tenax</i> 'Aloepurpurea'	Shrub (Grass)	
<i>Penstemon</i> 'Ray Goodenough'	CA Perennial	
<i>Penstemon</i> 'Wine Red'	Perennial	
<i>Penstemon</i> 'Boom Boom Borstle'	Perennial	
<i>Rhamnus</i> <i>californica</i> (Coffeeferry)	CA Shrub	
<i>Symphoricarpos</i> <i>racemosus</i> (Snowberry)	Shrub	
<i>Zauschneria</i> <i>californica</i> (CA Fuchsia)	CA Shrub	

YELLOW	<i>Achillea</i> <i>filanulata</i> 'Coronation Gold'	Perennial
	<i>Artemisia</i> 'Oxford Lacewing'	Perennial
	<i>Artemisia</i> <i>synonemoides</i> 'Black Hill'	CA Perennial
	<i>Banksia</i> <i>sessiliflora</i>	Shrub
	<i>Scilla</i> <i>maritima</i> (Sea Flower)	CA Perennial
	<i>Saxifraga</i> <i>californica</i>	CA Shrub
	<i>Scopolia</i>	Succulent
	<i>Helianthemum</i> <i>nummularium</i> 'Yellow'	Perennial
	<i>Lupinus</i> <i>arborescens</i> 'Yellow Bush Lupine'	Perennial
	<i>Mathonia</i> <i>subglobosa</i> (Chokecherry)	CA Perennial
<i>Phormium</i> 'Tom Thumb'	Shrub (Grass)	
<i>Sayornis</i> <i>delium</i> 'Point Reyes'	CA Perennial	

WHITE	<i>Festuca</i> <i>Rubra</i> 'Moate'	CA Grass
	<i>Geranium</i> <i>biokova</i>	Perennial
	<i>Geranium</i> 'Mist'	Perennial
	<i>Juncus</i> <i>patens</i>	CA Perennial
	<i>Malus</i> <i>domestica</i> 'Granny Smith' (Apple)	Fruiting Tree
<i>Malus</i> <i>domestica</i> 'Merrose' (Apple)	Fruiting Tree	
<i>Parashebe</i>	Perennial	
<i>Penstemon</i> 'G. Holy's White'	Perennial	

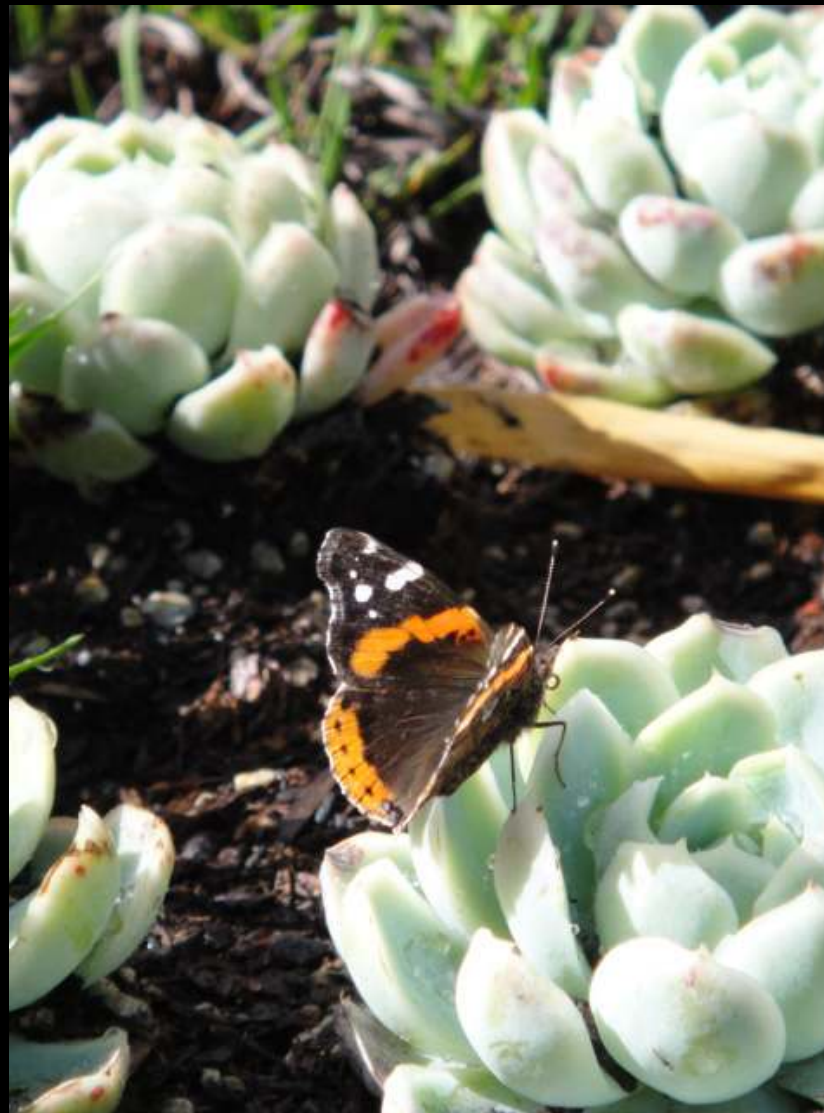
CYLINDRICAL	<i>Carex</i> <i>testacea</i> 'Prarie Fire'	Perennial
	<i>Cornus</i> (Dogwood)	CA Shrub
	<i>Eriogonum</i> <i>Santa Barbara</i>	CA Perennial
	<i>Dodonaea</i> <i>viscosa</i> 'Purpurea'	Small Tree
<i>Lantana</i> <i>montevidenensis</i> 'Purple'	Shrub	

BAMBOO	<i>Borinda</i> <i>botana</i>	Bamboo
	<i>Chusquea</i> <i>culeou</i> 'Chilean Straight'	Bamboo
	<i>Semiarundinaria</i> <i>fastuosa</i> 'Temple Bamboo'	Bamboo

LOGS	<i>Eucalyptus</i> 'Blue Gum'	Tree
	<i>Eucalyptus</i> 'Red Gum'	Tree
	<i>Monterey</i> <i>Cypress</i>	Tree
<i>Monterey</i> <i>Pine</i>	Tree	

X = Regionally native species.

This page is available for download at [www.PlantSF.org](http://www.PlantSF.org).



Passive recreation: native plant list for observation



Site: 8,000 sf of excess roadway identified for permanent park - 2010





Naples Green – Color, fragrance, rambling pathways for active use



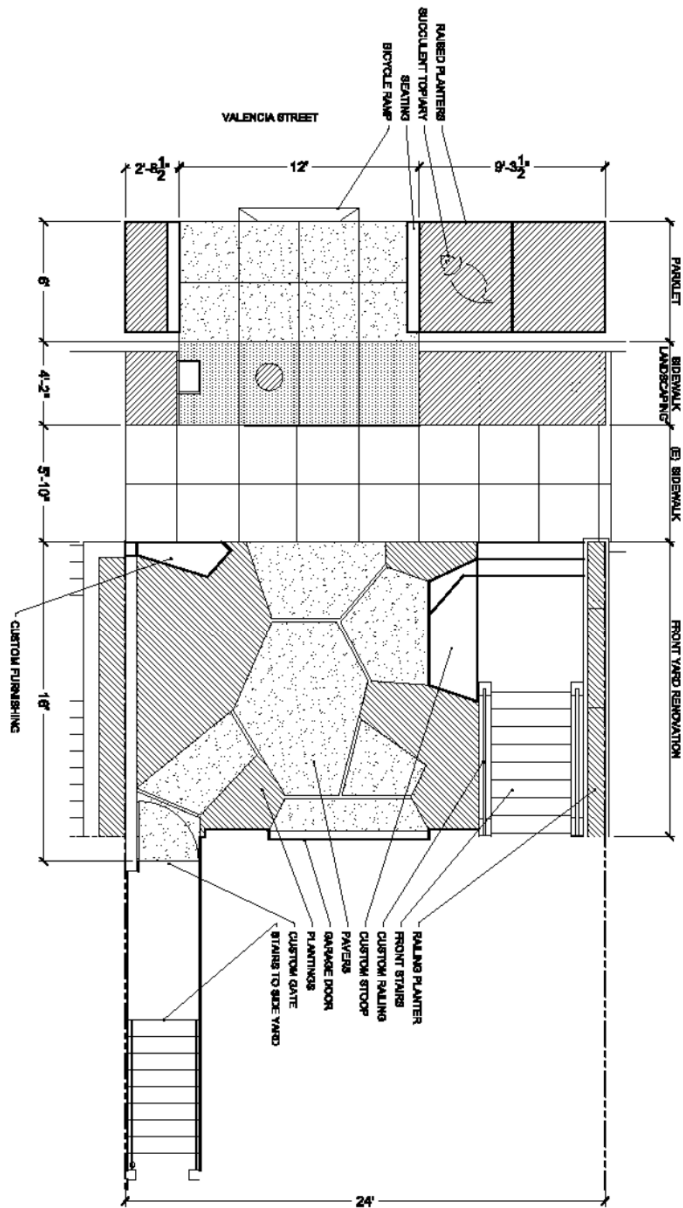


Site: 100% paved, unsociable, underutilized street space





'Parklet' amenity to renovated front garden



LANDSCAPE PLAN

NO.	DATE	BY	REVISION
1			

837 Valencia  
San Francisco, CA

SHIFT Design Studio  
2717 Market Street - San Francisco, CA 94114  
415 401.2777 - www.shiftdesignstudio.com

SHIFT  
San Francisco, CA



- Completed 2012
- Privately funded
- First (and only) parklet at residence
- Non-commercial
- \$20,000 (design, fees, materials, labor)
- 6' x 25' (150sf, \$133 /sf)
- Increases effective front yard by 16'



- **No street parking removed**
- **Permits for each of 3 zones**
- **100% rain diversion at yard / 75% at sidewalk**
- **Native & climate adapted plants provide habitat, forage, color, fragrance**
- **Containers designed for large soil volume & drainage layer**
- **Aluminum and wood allow for easy removal of graffiti**
- **Tailored Seating: sloped narrow benches**
- **100% recyclable materials**
- **1000% more sociable**







Materials pre-assembled off-site for quick installation time





3 zones: Parklet, Sidewalk, Front Yard





Extended landing: usable stoop integrates landmark building with modern design





Existing slope accommodated by new permeable patio



Containers mediate the scale of cars and provide significant buffer





Design for abundance: Integration of habitat/forage with social space



Design to engage the senses





Design specificity for social engagement







Accommodates small gatherings





... and large events





Opportunities for public interaction





... such as Shakespeare in the Parklet





Sustainability: Making cities more livable broadens the spectrum of people who will choose to live in them.